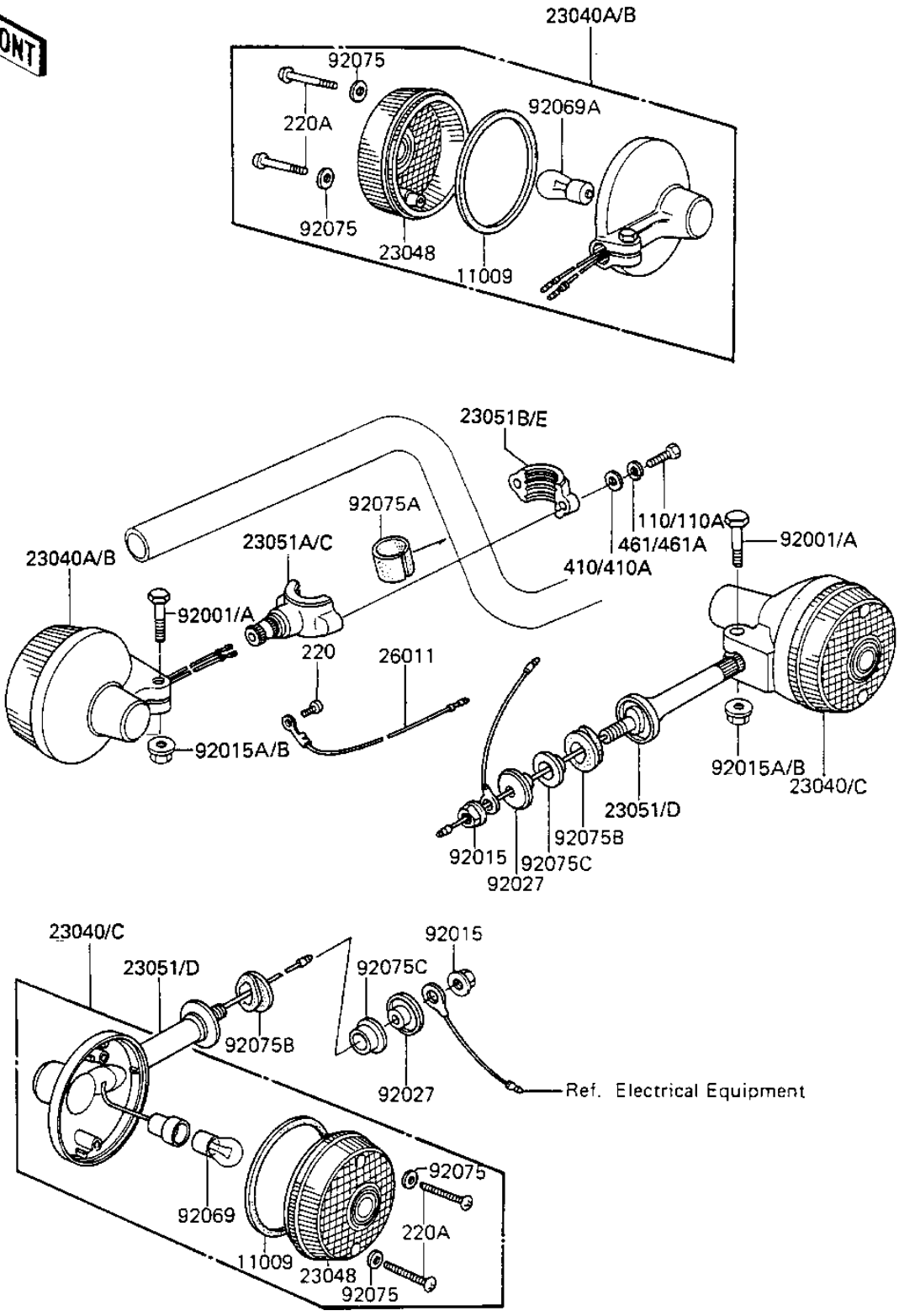


1983 Spectre PARTS DIAGRAM

TURN SIGNALS

F2730-0104



1983 Spectre PARTS LIST

TURN SIGNALS

ITEM NAME	PART NUMBER	QUANTITY
GASKET-SIG LAMP LENS (Ref # 11009)	23050-003	1
LAMP-SIGNAL,FR (Ref # 23040B)	23040-1042	1
LAMP-SIGNAL,RR (Ref # 23040C)	23040-1043	1
LENS,TURN SIGNAL LAMP (Ref # 23048)	23048-1001	1
BRACKET-SIGNAL LAMP,F (Ref # 23051C)	23051-1077	1
BRACKET-SIGNAL LAMP,R (Ref # 23051D)	23051-1078	1
BRACKET-SIGNAL LAMP,F (Ref # 23051E)	23051-1079	1
WIRE-TURN SIGNAL LEAD (Ref # 26011)	26011-061	1
BOLT,6X30,BLACK (Ref # 92001A)	92001-1750	1
NUT,FLANGED,10MM (Ref # 92015)	92015-1428	1
NUT,FLANGED,6MM,BLACK (Ref # 92015B)	92015-1237	1
COLLAR (Ref # 92027)	92027-147	1
BULB 12V 32CP (Ref # 92069)	92069-055	1
BULB,12V 23/8W (Ref # 92069A)	92069-060	1
WASHER-PLAIN,4MM (Ref # 92075)	23058-002	1
DAMPER RUBBER (Ref # 92075A)	23066-003	1
DAMPER RUBBER (Ref # 92075B)	92075-128	1
DAMPER RUBBER,SIG LM (Ref # 92075C)	92075-158	1
BOLT,5X16,BLACK (Ref # 110)	110C0516A	1
SCREW-PAN-CROS (Ref # 220)	220B0304	1
SCREW-PAN-CROS (Ref # 220A)	220B0420	1
WASHER PLAIN (Ref # 410A)	410F0500	1
WASHER-SPRING,5MM,BLA (Ref # 461A)	461K0500	1