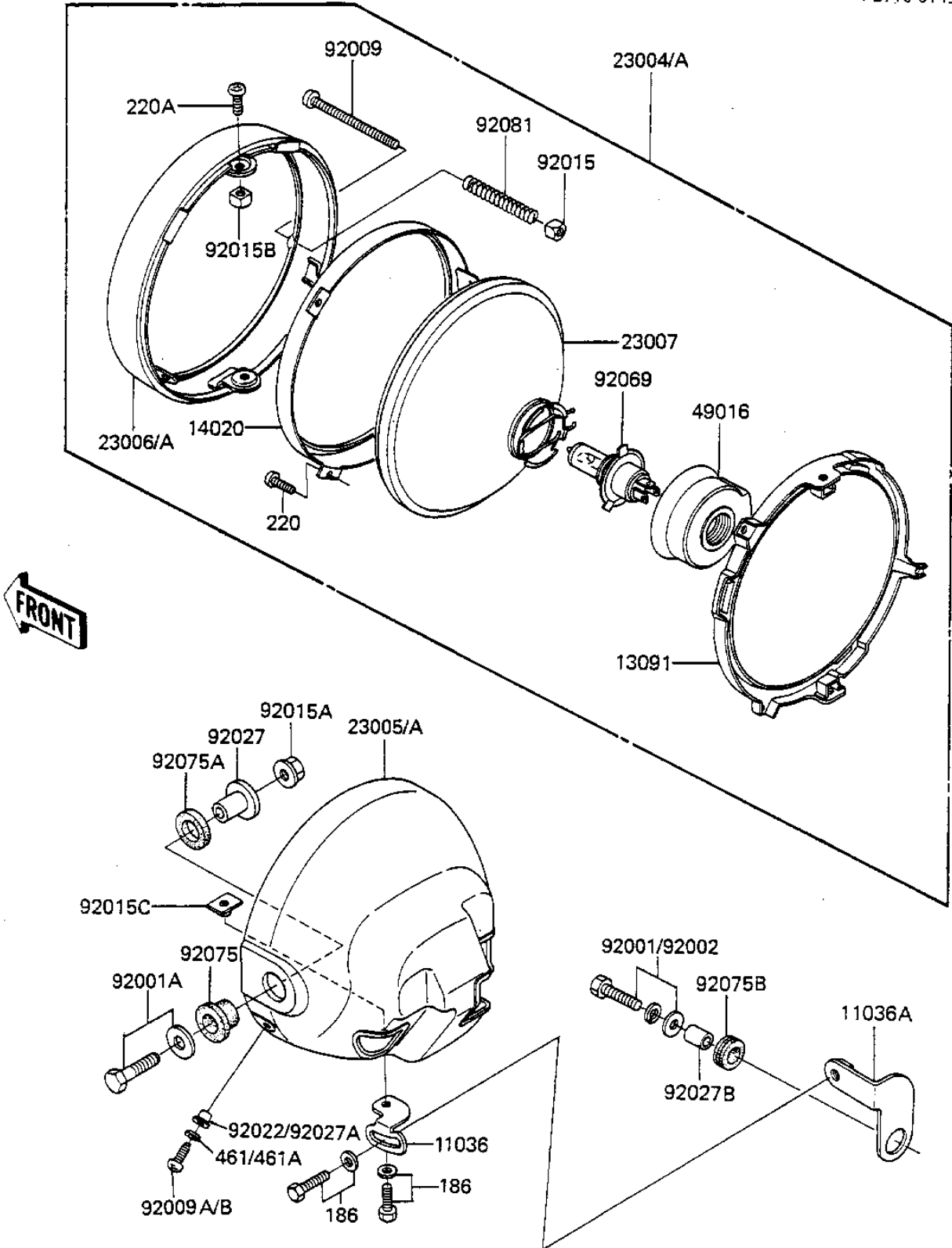


## 1983 Spectre PARTS DIAGRAM

HEADLIGHT

F2710-0149



## 1983 Spectre PARTS LIST

### HEADLIGHT

ITEM NAME	PART NUMBER	QUANTITY
BRACKET-A,HEAD LAMP (Ref # 11036)	11036-1649	1
BRACKET-A (Ref # 11036A)	11036-1650	1
HOLDER,HEAD LAMP (Ref # 13091)	13091-1160	1
RETAINER,HEAD LAMP (Ref # 14020)	14020-1018	1
LAMP-HEAD (Ref # 23004)	23004-1082	1
BODY-COMP-HEAD LAMP,E (Ref # 23005)	23005-1026-H8	1
RIM-LAMP (Ref # 23006)	23006-1019	1
LENS UNIT,HEAD LAMP (Ref # 23007)	23007-1009	1
DUST COVER (Ref # 49016)	49016-1016	1
BOLT,6X25 (Ref # 92001)	92002-1137	1
BOLT,FLANGED,8X35 (Ref # 92001A)	92001-1910	1
SCREW,FOCUS ADJU.4X52 (Ref # 92009)	92009-1033	1
SCREW,5X16 (Ref # 92009A)	92009-1693	1
NUT,4MM (Ref # 92015)	23020-018	1
NUT,8M/M (Ref # 92015A)	92015-1014	1
NUT,5MM (Ref # 92015B)	92015-1157	1
NUT-6MM,HEAD LAMP (Ref # 92015C)	92015-1231	1
COLLAR,HEAD LAMP FITT (Ref # 92027)	92027-1131	1
COLLAR,HEAD LAMP,BLAC (Ref # 92027A)	92027-1503	1
COLLAR,REAR FENDER (Ref # 92027B)	92027-162	1
BULB,12V-60/55W (Ref # 92069)	92069-1002	1
DAMPER,HEAD LAMP FITT (Ref # 92075)	92075-1109	1
DAMPER,HEAD LAMP FITT (Ref # 92075A)	92075-1110	1
DAMPER RUBBER,RR FENR (Ref # 92075B)	92075-209	1
SPRING FOCUS ADJUST (Ref # 92081)	23014-005	1
BOLT-UPSET-WP (Ref # 186)	186C0614	1
SCREW PAN HEAD 3X8 (Ref # 220)	220B0308	1
SCREW PAN HEAD 5X10 (Ref # 220A)	220B0510	1
WASHER-SPRING,5MM,BLA (Ref # 461A)	461K0500	1