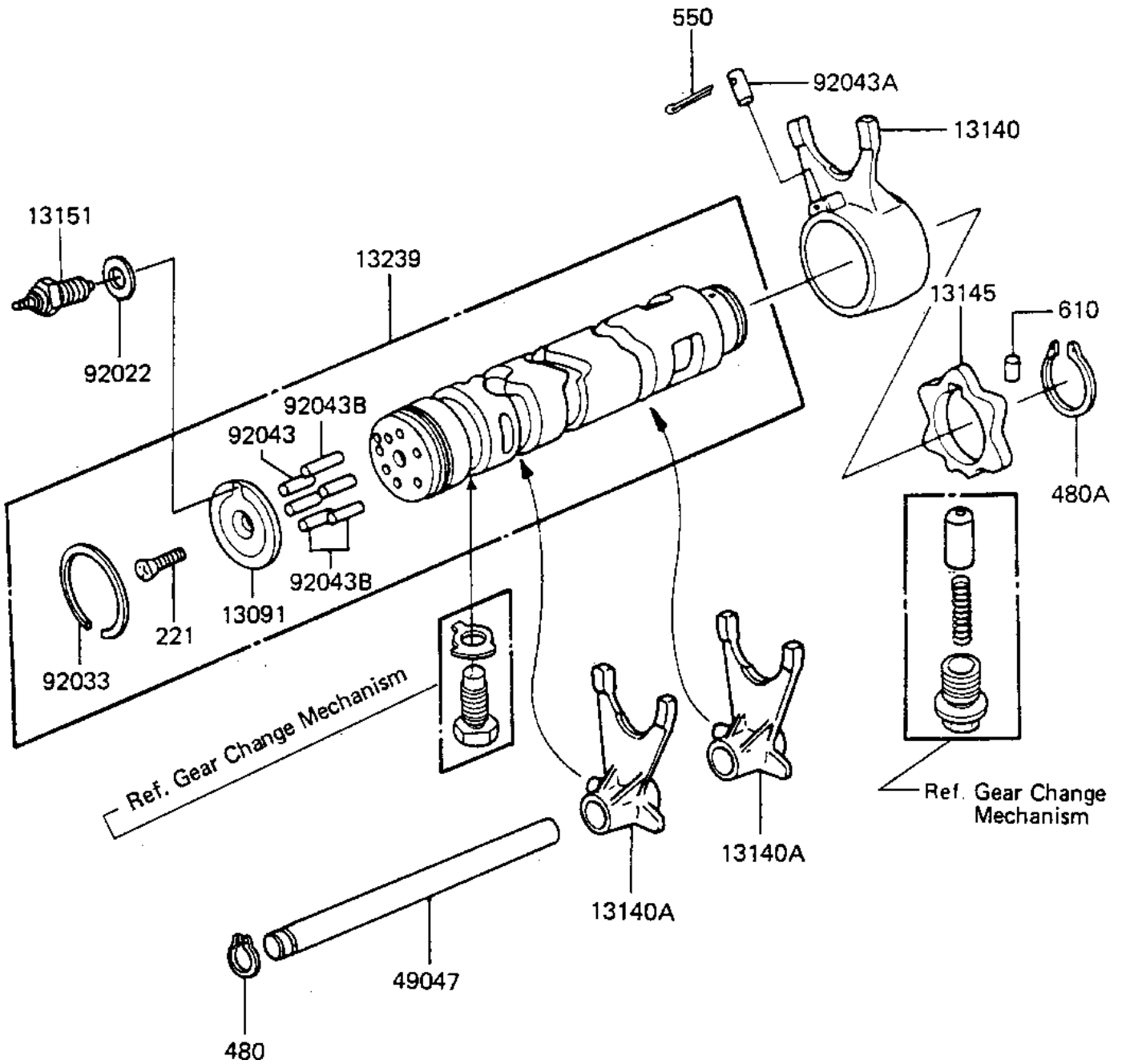


# 1984 LTD Shaft PARTS DIAGRAM

GEAR CHANGE DRUM & FORKS

E1362-0061



# 1984 LTD Shaft PARTS LIST

## GEAR CHANGE DRUM & FORKS

| ITEM NAME                           | PART NUMBER | QUANTITY |
|-------------------------------------|-------------|----------|
| HOLDER,CHANGE DRUM PI (Ref # 13091) | 13091-1104  | 1        |
| SHIFT FORK,GEAR SHIFT (Ref # 13140) | 13140-1016  | 1        |
| FORK-SHIFT,OUTPUT (Ref # 13140A)    | 13140-1062  | 2        |
| CAM-CHANGE DRUM (Ref # 13145)       | 13145-1058  | 1        |
| SWITCH,NEUTRAL (Ref # 13151)        | 13151-1007  | 1        |
| DRUM-ASSY-CHANGE (Ref # 13239)      | 13239-1119  | 1        |
| ROD-SHIFT (Ref # 49047)             | 49047-5003  | 1        |
| GASKET CHECK VALVE (Ref # 92022)    | 92065-058   | 1        |
| CIRCLIP,37MM (Ref # 92033)          | 92033-035   | 1        |
| PIN GEAR CHANGE DRUM (Ref # 92043)  | 92042-014   | 1        |
| PIN, DOWEL, 8X18 (Ref # 92043A)     | 92042-021   | 1        |
| PIN,GEAR CHNGE DRUM (Ref # 92043B)  | 92042-030   | 5        |
| SCREW CNTSNK HD 6X20 (Ref # 221)    | 221B0620    | 1        |
| CIRCLIP 12MM (Ref # 480)            | 480J1200    | 1        |
| CIRCLIP,30MM (Ref # 480A)           | 480J3000    | 1        |
| PIN COTTER 3.0X20 (Ref # 550)       | 550D3020    | 1        |
| PIN-DOWEL,4X6 (Ref # 610)           | 610A0406    | 1        |