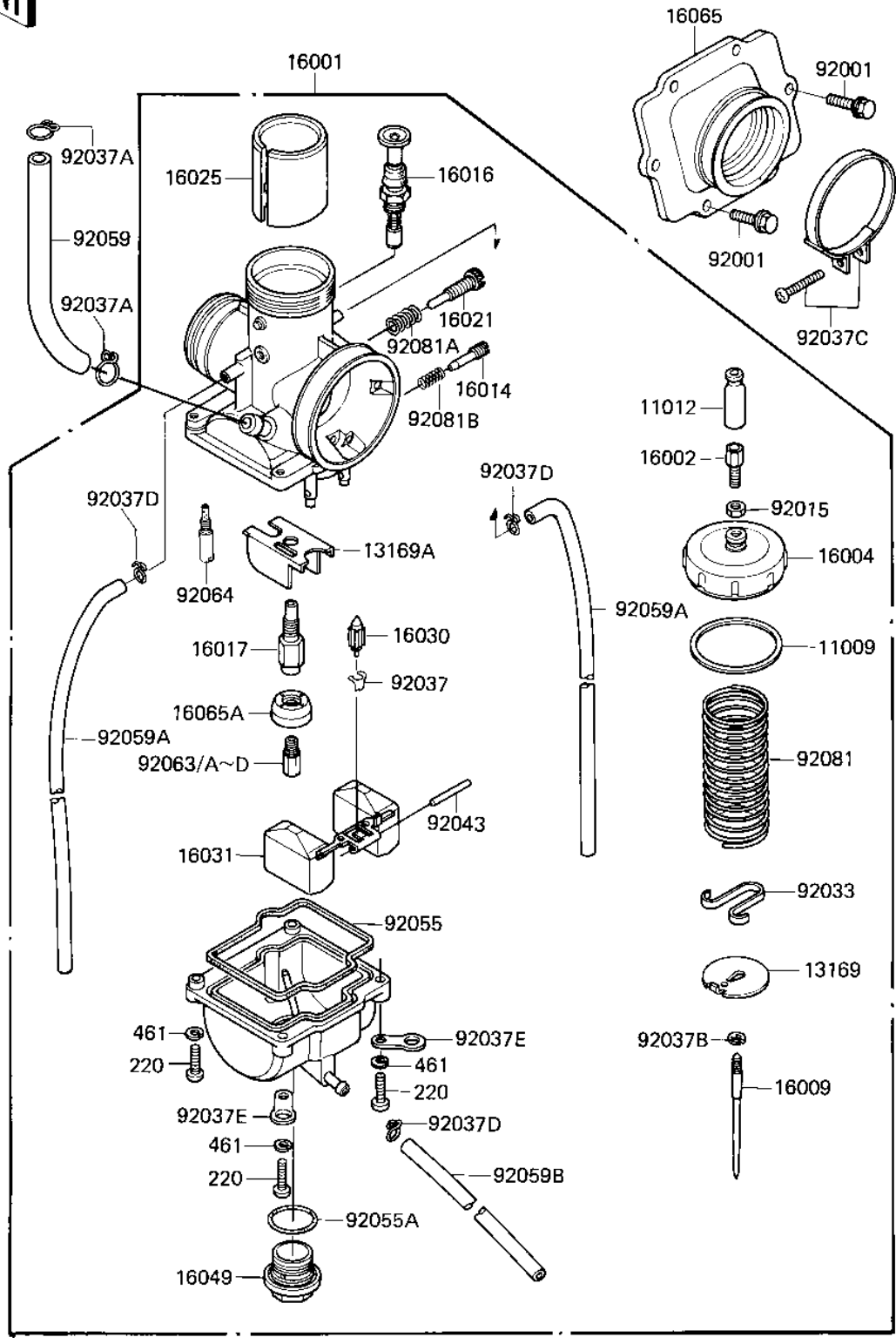


# 1983 KX250 PARTS DIAGRAM

CARBURETOR ('83 KX250-C1)

E1611-0108



# 1983 KX250 PARTS LIST

## CARBURETOR ('83 KX250-C1)

ITEM NAME	PART NUMBER	QUANTITY
GASKET,CHAMBER CAP (Ref # 11009)	11009-1337	1
CAP,CABLE ADJUSTER (Ref # 11012)	11012-1293	1
PLATE,THROTTLE VALVE (Ref # 13169)	13169-1609	1
PLATE,FLOAT CHAMBER (Ref # 13169A)	13169-1610	1
CARBURETOR (Ref # 16001)	16001-1678	1
ADJUSTER-CABLE (Ref # 16002)	16002-1015	1
CAP-CHAMBER,MIXING (Ref # 16004)	16004-1017	1
NEEDLE-JET,N13A (Ref # 16009)	16009-1139	1
SCREW-PILOT AIR (Ref # 16014)	16014-1033	1
PLUNGER,STARTER (Ref # 16016)	16016-1028	1
JET-NEEDLE (Ref # 16017)	16017-1126	1
SCREW-THROTTLE STOP (Ref # 16021)	16021-1045	1
VALVE-THROTTLE,CA3.5 (Ref # 16025)	16025-1079	1
VALVE-FLOAT,3.6 (Ref # 16030)	16030-1028	1
FLOAT (Ref # 16031)	16031-1022	1
COVER-MAIN JET (Ref # 16049)	16049-1007	1
HOLDER-CARBURETOR (Ref # 16065)	16065-1048	1
HOLDER-CARBURETOR,JET (Ref # 16065A)	16065-1074	1
BOLT-FLANGED-SMALL (Ref # 92001)	132G0620	6
NUT,CABLE ADJUST LOCK (Ref # 92015)	92015-1252	1
RING-SNAP,THROTTLE VA (Ref # 92033)	92033-1096	1
CLIP,FLOAT VALVE (Ref # 92037)	16044-007	1
CLAMP,CARB CONECT HOS (Ref # 92037A)	92037-056	2
CIRCLIP,JET NEEDLE (Ref # 92037B)	92037-1039	1
CLAMP,CARBURETOR HOLD (Ref # 92037C)	92037-1313	1
CLAMP,TUBE (Ref # 92037D)	92037-1396	3
CLAMP,HOSE (Ref # 92037E)	92037-1969	2
PIN,FLOAT (Ref # 92043)	92043-1148	1
RING-O,FLOAT CHAMBER (Ref # 92055)	92055-1166	1

# 1983 KX250 PARTS LIST

CARBURETOR ('83 KX250-C1)

ITEM NAME	PART NUMBER	QUANTITY
RING-O,MAIN JET COVER (Ref # 92055A)	92055-1167	1
TUBE,FUEL,6.5X11.5 (Ref # 92059)	92059-1252	1
TUBE,4X7X400 (Ref # 92059A)	92059-1284	2
TUBE,3.5X6.5X270 (Ref # 92059B)	92059-1285	1
JET-MAIN,#155 (Ref # 92063)	92063-1256	1
JET-MAIN,#158 (Ref # 92063A)	92063-1257	1
JET-MAIN,#160 (Ref # 92063B)	92063-1258	1
JET-MAIN,#162 (Ref # 92063C)	92063-1259	1
JET-MAIN,#165 (Ref # 92063D)	92063-1260	1
JET-PILOT,#60 (Ref # 92064)	92064-1063	1
SPRING,THROTTLE VALVE (Ref # 92081)	92081-1553	1
SPRING,STOP SCREW (Ref # 92081A)	92081-1554	1
SPRING,ADJUST SCREW (Ref # 92081B)	92081-1555	1
SCREW PAN HEAD 4X16 (Ref # 220)	220B0416	4
WASHER SPRING 4MM (Ref # 461)	461F0400	4