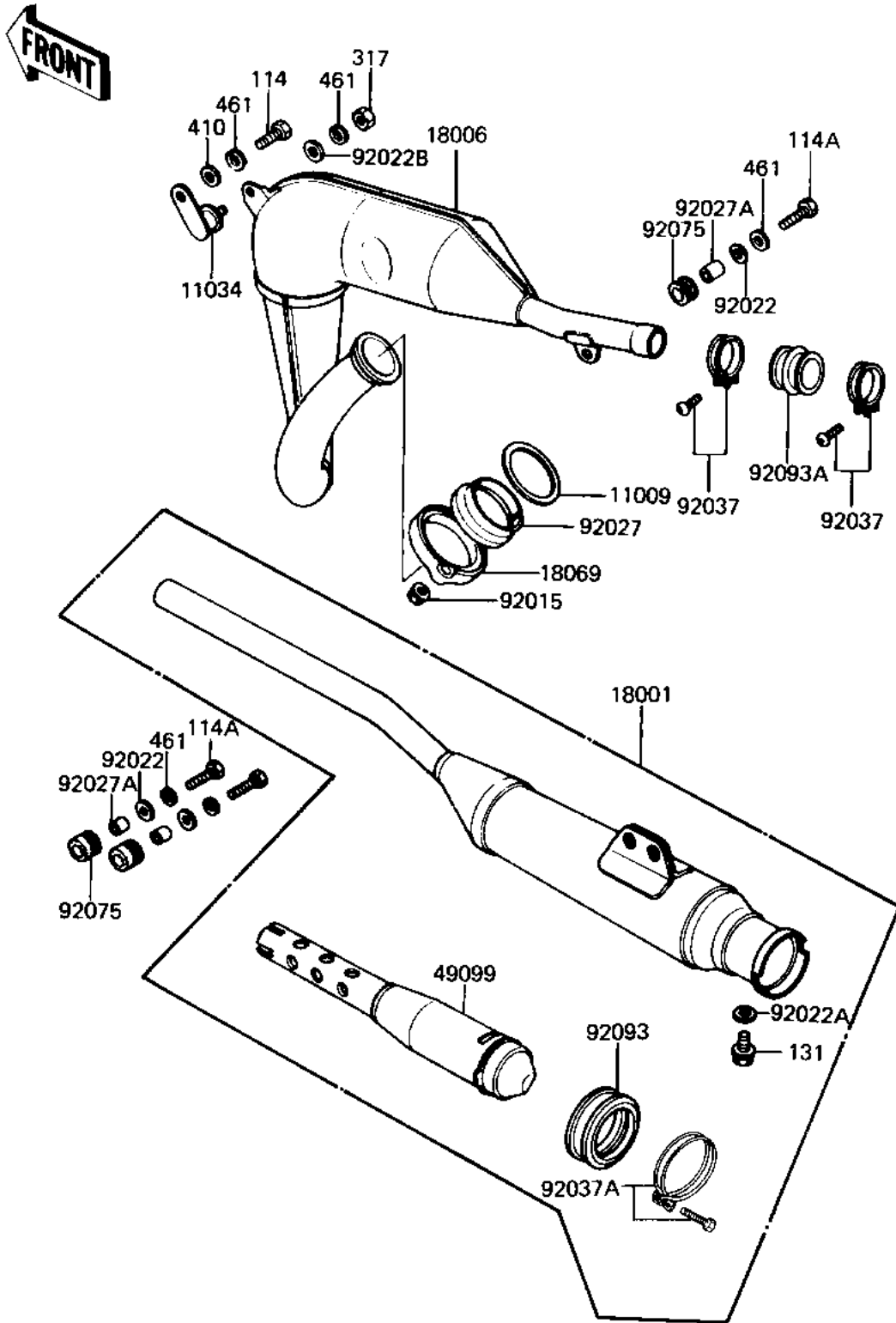


## 1983 KE125 PARTS DIAGRAM

MUFFLER ('82-'83 A9/A10)

EX-1170-000



## 1983 KE125 PARTS LIST

MUFFLER ('82-'83 A9/A10)

ITEM NAME	PART NUMBER	QUANTITY
GASKET EXHAUST PIPE (Ref # 11009)	18067-008	1
BRACKET,MUFFLER (Ref # 11034)	18061-060	1
MUFFLER (Ref # 18001)	18001-1279	1
BODY-MUFFLER (Ref # 18006)	18006-1135	1
HOLDER,EXHAUST PIPE (Ref # 18069)	18069-057	1
BAFFLE PIPE,MUFFLER (Ref # 49099)	49099-1028	1
NUT,LOCK,8MM (Ref # 92015)	92017-013	1
WASHER,8X26X2.3 (Ref # 92022)	92022-1564	1
WASHER OIL PUMP BANJO (Ref # 92022A)	92022-077	1
WASHER,8.5X20X1.6 (Ref # 92022B)	92022-1561	1
INSERT,EXHAUST HOLDER (Ref # 92027)	18070-007	1
COLLAR (Ref # 92027A)	92027-102	1
CLAMP,CONNECTOR (Ref # 92037)	92037-1127	1
CLAMP MUFFLER (Ref # 92037A)	92037-1190	1
DAMPER RUBBER-MUFFLER (Ref # 92075)	18063-005	1
DUST SHIELD,MUFFLER (Ref # 92093)	92093-1013	1
SEAL,MUFFLER CONNECT (Ref # 92093A)	92093-1020	1
BOLT-SMALL-UPSET,8X16 (Ref # 114)	115G0816	1
BOLT HEX HEAD 8X28 (Ref # 114A)	114G0828	1
BOLT,FLANGED,6X8 (Ref # 131)	130B0608	1
NUT,8M/M (Ref # 317)	317B0800	1
WASHER PLAIN 8MM (Ref # 410)	410B0800	1
WASHER SPRING 8MM (Ref # 461)	461F0800	1