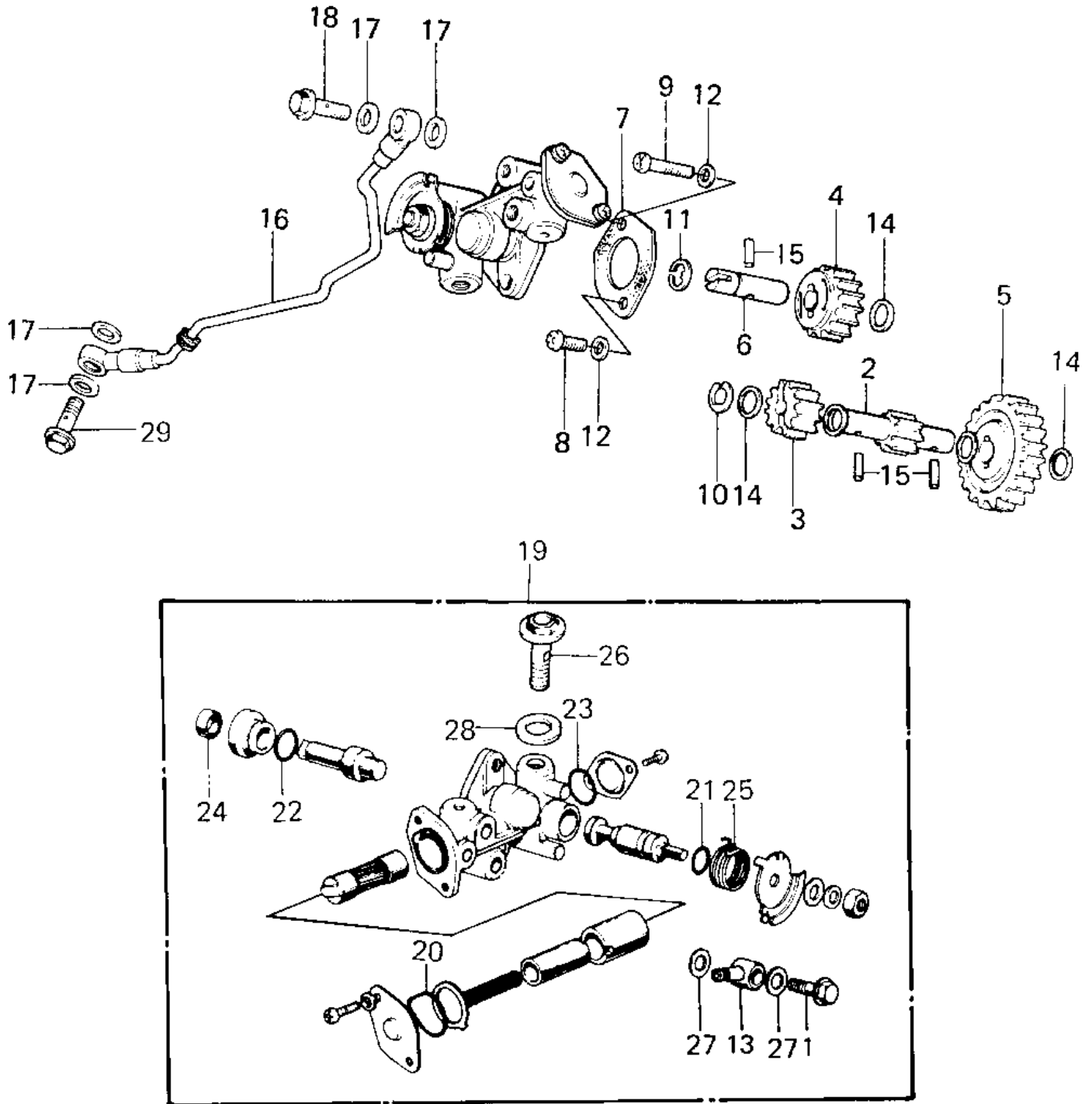


1981 KE125 PARTS DIAGRAM

OIL PUMP ('80-'81 A7/A8)



1981 KE125 PARTS LIST

OIL PUMP ('80-'81 A7/A8)

ITEM NAME	PART NUMBER	QUANTITY
BOLT-BANJO,6MM (Ref # 1)	92060-013	2
PINION,TACHOMETER (Ref # 2)	13224-010	1
GEAR,OIL PUMP (Ref # 3)	16085-020	1
GEAR,OIL PUMP (Ref # 4)	16085-021	1
GEAR,OIL PUMP (Ref # 5)	16085-022	1
SHAFT,OIL PUMP GEAR (Ref # 6)	16086-003	1
GASKET,OIL PUMP (Ref # 7)	11060-1160	1
SCREW-PAN-CROS (Ref # 8)	220B0514	1
SCREW PAN CROSS,5X28 (Ref # 9)	220B0528	1
CIRCLIP 7MM (Ref # 10)	482J7000	2
WASHER OIL PUMP (Ref # 12)	92022-037	1
CONNECTOR BANJO (Ref # 13)	92061-009	1
WASHER,THRUST (Ref # 14)	92026-095	1
PIN,DOWEL (Ref # 15)	92042-035	1
PIPE,OIL (Ref # 16)	16134-022	1
WASHER OIL PUMP BANJO (Ref # 17)	92022-077	2
OIL PUMP ASSY (Ref # 19)	16082-1014	1
"O" RING,UPPER CAP (Ref # 20)	16088-002	1
SEAL-OIL,CAMSHAFT,"X" (Ref # 21)	92049-1294	1
"O" RING,OIL PUMP SHT (Ref # 22)	16090-002	1
"O" RING,LOWER CAP (Ref # 23)	16090-004	1
OIL SEAL OIL PUMP SHT (Ref # 24)	16091-001	1
SPRING,OIL PUMP LEVER (Ref # 25)	16093-007	1
BOLT,AIR VENT (Ref # 26)	92009-1010	1
WASHER (Ref # 28)	92022-1006	1
BOLT BANJO (Ref # 29)	92060-008	1