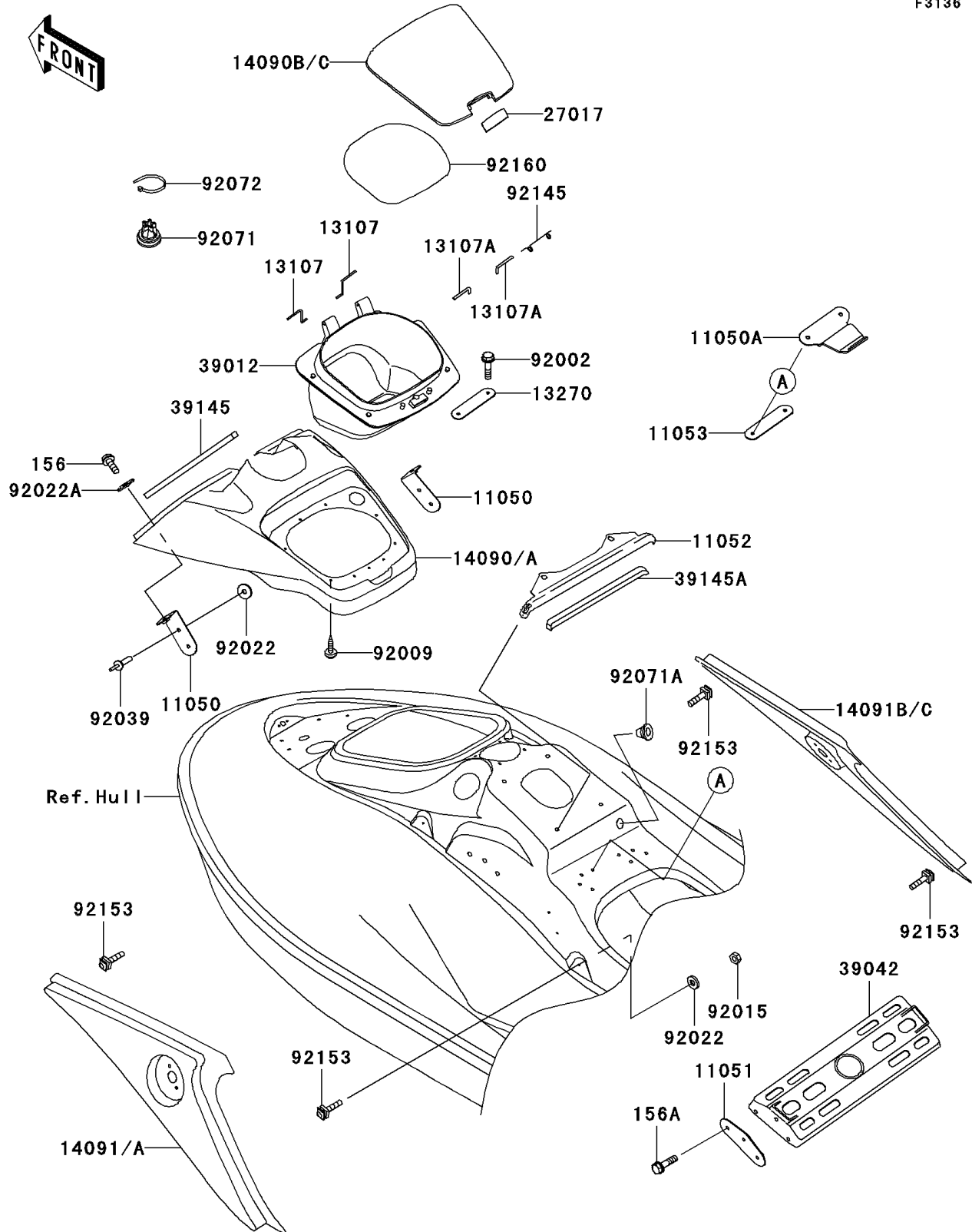


## 2004 Ultra 150 PARTS DIAGRAM

Hull Middle Fittings

F3136



## 2004 Ultra 150 PARTS LIST

Hull Middle Fittings

ITEM NAME	PART NUMBER	QUANTITY
BOLT-WP,6X18 (Ref # 156)	156R0618	1
BOLT-WP,6X25 (Ref # 156A)	156R0625	1
BRACKET (Ref # 11050)	11050-3746	1
BRACKET (Ref # 11050A)	11050-3775	1
BRACKET (Ref # 11051)	11051-3760	1
BRACKET (Ref # 11052)	11052-3748	1
BRACKET (Ref # 11053)	11053-3732	1
SHAFT (Ref # 13107)	13107-3761	1
SHAFT (Ref # 13107A)	13107-3769	1
PLATE (Ref # 13270)	13270-3909	1
COVER,HANDLE,C.L.GREEN (Ref # 14090)	14090-3809-367	1
COVER,CENTER STORAGE,C.L.GREEN (Ref # 14090B)	14090-3812-367	1
COVER,SIDE,LH,C.L.GREEN (Ref # 14091)	14091-3731-367	1
COVER,SIDE,RH,C.L.GREEN (Ref # 14091B)	14091-3732-367	1
LOCK,CENTER STORAGE,F.BLACK (Ref # 27017)	27017-3720-6Z	1
CASE-STORAGE (Ref # 39012)	39012-3737	1
CROSSMEMBER,FR (Ref # 39042)	39042-3707	1
TRIM-SEAL,L=340 (Ref # 39145)	39145-3764	1
TRIM-SEAL,L=340 (Ref # 39145A)	39145-3779	1
BOLT,6X25 (Ref # 92002)	92002-3714	1
SCREW,TAPPING,5X20 (Ref # 92009)	92009-3716	1
NUT,LOCK,5MM (Ref # 92015)	92015-3798	1
WASHER,5X16X1.5 (Ref # 92022)	92022-3041	1
WASHER,6.5X20X1.5 (Ref # 92022A)	92022-3710	1
RIVET (Ref # 92039)	92039-3775	1
GROMMET (Ref # 92071)	92071-3819	1
GROMMET (Ref # 92071A)	92071-3826	1
BAND,L=292.1 (Ref # 92072)	92072-3509	1
SPRING (Ref # 92145)	92145-3711	1

## 2004 Ultra 150 PARTS LIST

Hull Middle Fittings

ITEM NAME	PART NUMBER	QUANTITY
BOLT,5MM (Ref # 92153)	92153-3703	1
DAMPER (Ref # 92160)	92160-3933	1