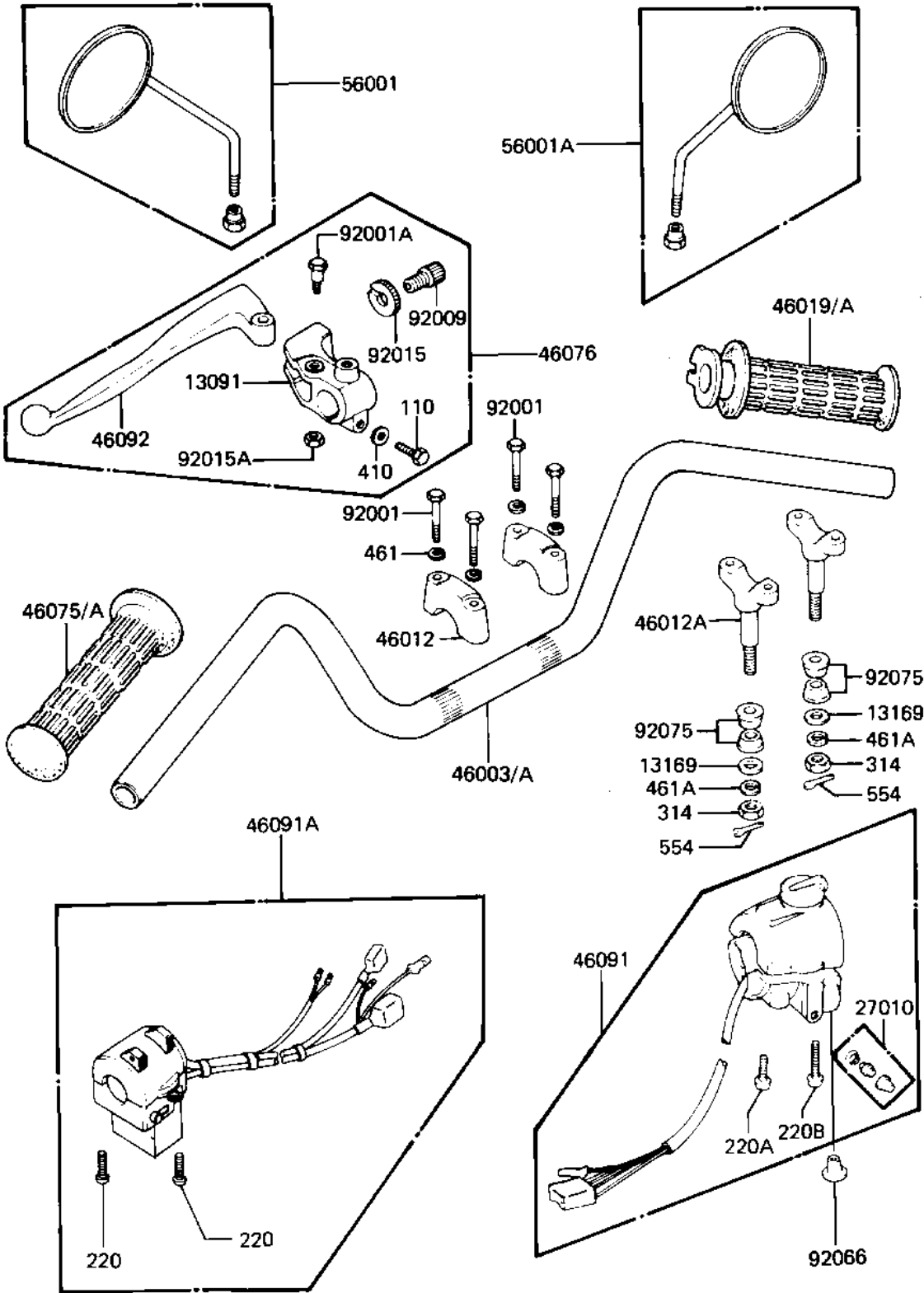


# 1982 LTD Belt PARTS DIAGRAM

HANDLEBAR ('81-'83 D2/D3/D4/D5)

F2310-0068



# 1982 LTD Belt PARTS LIST

HANDLEBAR ('81-'83 D2/D3/D4/D5)

ITEM NAME	PART NUMBER	QUANTITY
HOLDER,CLUTCH LEVER (Ref # 13091)	46094-017	1
CAP HANDLEBAR HOLDER (Ref # 13169)	46016-003	2
SWITCH ASSY,HORN BUTN (Ref # 27010)	27010-1009	1
HANDLEBAR (Ref # 46003A)	46003-1088	1
HOLDER-HANDLEBAR (Ref # 46012)	46012-008	2
HOLDER-HANDLEBAR LOW (Ref # 46012A)	46012-010	2
GRIP-ASSY THROTTLE (Ref # 46019A)	46019-1017	1
GRIP,LH (Ref # 46075A)	46075-1022	1
LEVER ASSY,CLUTCH (Ref # 46076)	46076-052	1
HOUSING ASSY,R.H (Ref # 46091)	46091-1039	1
HOUSING-ASSY-CONTROL (Ref # 46019A)	46091-1144	1
LEVER,CLUTCH (Ref # 46092)	46092-023	1
REAR VIEW MIRROR,L.H. (Ref # 56001)	56001-1007	1
REAR VIEW MIRROR,R.H. (Ref # 56001A)	56001-1008	1
BOLT 8X38 (Ref # 92001)	92001-1405	4
BOLT,HEX HEAD (Ref # 92001A)	92007-047	1
SCREW CABLE ADJUST (Ref # 92009)	46055-003	1
NUT,CABLE ADUST NUT (Ref # 92015)	46056-007	1
NUT (Ref # 92015A)	92019-008	1
PLUG,9.5X8 (Ref # 92066)	92066-1077	1
DAMPER RUBBER HANDLE (Ref # 92075)	92075-039	4
BOLT HEX HEAD 6X25 (Ref # 110)	110N0625	1
SCREW-PAN-CROS,5X25 (Ref # 220)	220B0525	2
SCREW PAN HEAD 5X30 (Ref # 220A)	220B0530	1
SCREW-PAN-CROS (Ref # 220B)	220B0540	1
NUT,10MM (Ref # 314)	314B1000	2
WASHER PLAIN 6MM (Ref # 410)	410B0600	1
WASHER SPRING 8MM (Ref # 461)	461F0800	4
WASHER SPRING 10MM (Ref # 461A)	461F1000	2

# 1982 LTD Belt PARTS LIST

HANDLEBAR ('81-'83 D2/D3/D4/D5)

ITEM NAME	PART NUMBER	QUANTITY
PIN,SNAP (Ref # 554)	554A0800	2