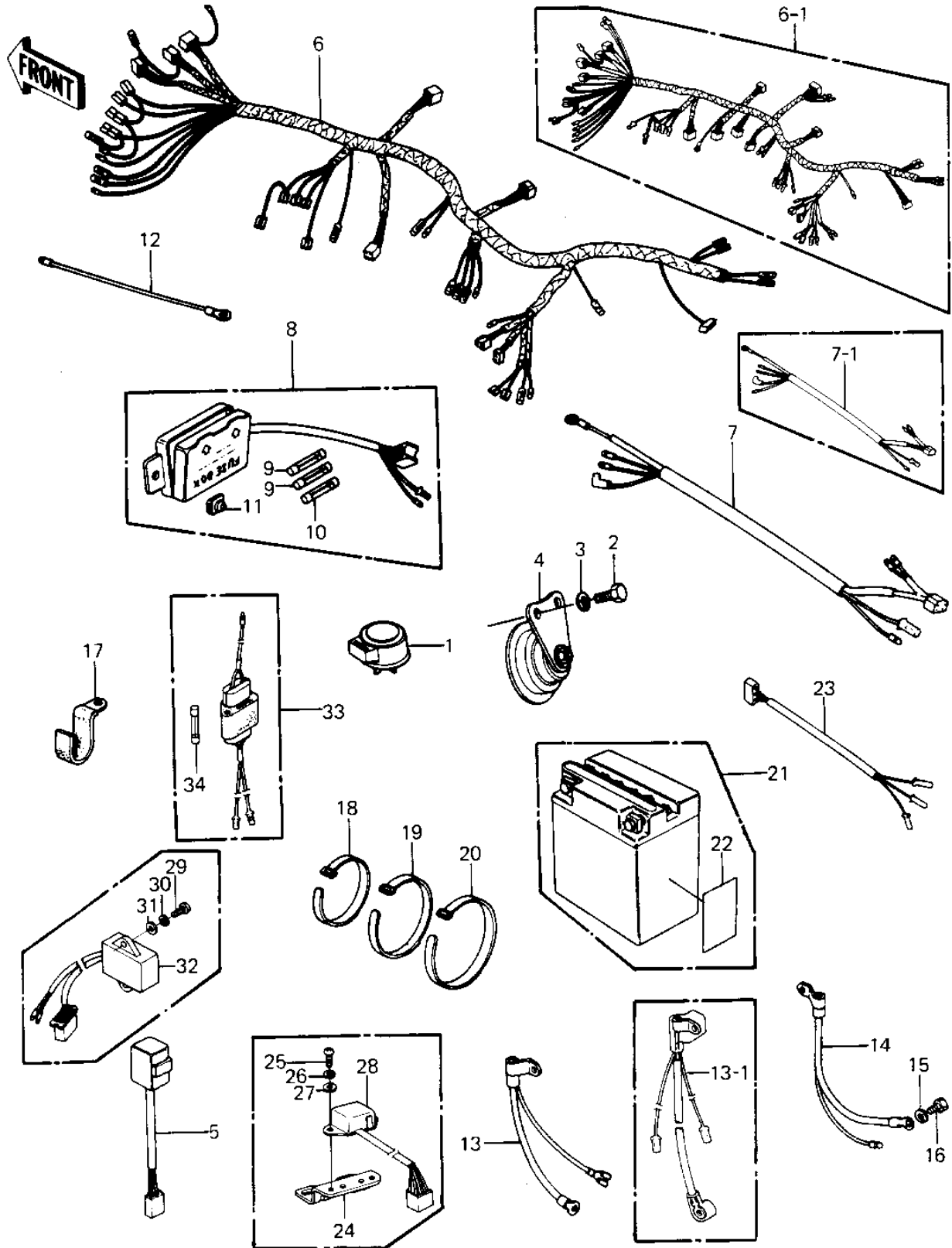


1981 LTD PARTS DIAGRAM

CHASSIS ELECTRICAL EQUIPMENT ('80-'81 C1)



1981 LTD PARTS LIST

CHASSIS ELECTRICAL EQUIPMENT ('80-'81 C1)

ITEM NAME	PART NUMBER	QUANTITY
RELAY-TURN SIGNAL (Ref # 1)	27002-011	1
BOLT-SMALL-UPSET,8X16 (Ref # 2)	115G0816	2
WASHER SPRING 8MM (Ref # 3)	461F0800	2
HORN (Ref # 4)	27003-1014	1
SWITCH,OUTAGE,INDICTR (Ref # 5)	28019-001	1
WIRING HARNESS,MAIN (Ref # 6)	26001-1162	1
HARNESS,MAIN (Ref # 6-1)	26001-1175	1
WIRING HARNESS,SUB (Ref # 7)	26001-1051	1
HARNESS,SUB (Ref # 7-1)	26001-1202	1
FUSE ASSY (Ref # 8)	26004-1002	1
FUSE 10A (Ref # 9)	26006-003	3
FUSE-20A (Ref # 10)	26006-005	2
DAMPER RUBBER,FUSE (Ref # 11)	92075-279	1
WIRE,LEAD (Ref # 12)	26011-095	2
WIRE-LEAD,BATTERY(T) (Ref # 13)	26011-1155	1
WIRE-LEAD,BATTERY (Ref # 13-1)	26011-1156	1
WIRE,LEAD,BATTERY(-) (Ref # 14)	26011-1032	1
WASHER SPRING 6MM (Ref # 15)	461F0600	1
BOLT,HEX HEAD,6MM (Ref # 16)	92001-137	1
CLAMP,WIRING HARNESS (Ref # 17)	92037-1069	3
BAND,SHORT (Ref # 18)	92072-030	4
BAND,MIDDLE (Ref # 19)	92072-031	3
BAND,LONG (Ref # 20)	92072-032	2
FB BAT FB12A-A (Ref # 21)	26012-1004	1
LABEL-WARNING,BATTERY (Ref # 22)	56040-1036	1
WIRING HARNESS,TL LMP (Ref # 23)	26002-046	1
BRACKET,RESERVE LIGHT (Ref # 24)	11034-1850	1
SCREW PAN HEAD 6X20 (Ref # 25)	220B0620	2
WASHER SPRING 6MM (Ref # 26)	461F0600	2

1981 LTD PARTS LIST

CHASSIS ELECTRICAL EQUIPMENT ('80-'81 C1)

ITEM NAME	PART NUMBER	QUANTITY
WASHER PLAIN 6MM (Ref # 27)	410B0600	2
SWITCH,RESERVE LIGHTI (Ref # 28)	27010-1024	1
SCREW PAN HEAD 6X25 (Ref # 29)	220B0625	2
WASHER SPRING 6MM (Ref # 30)	461F0600	2
WASHER PLAIN 6MM (Ref # 31)	410B0600	2
SWITCH,TURN SIGNAL OP (Ref # 32)	27010-1016	1
FUSE-ASSY,ACCESSORY (Ref # 33)	26004-1014	1
FUSE,10A,L=30M/M (Ref # 34)	26006-1002	3