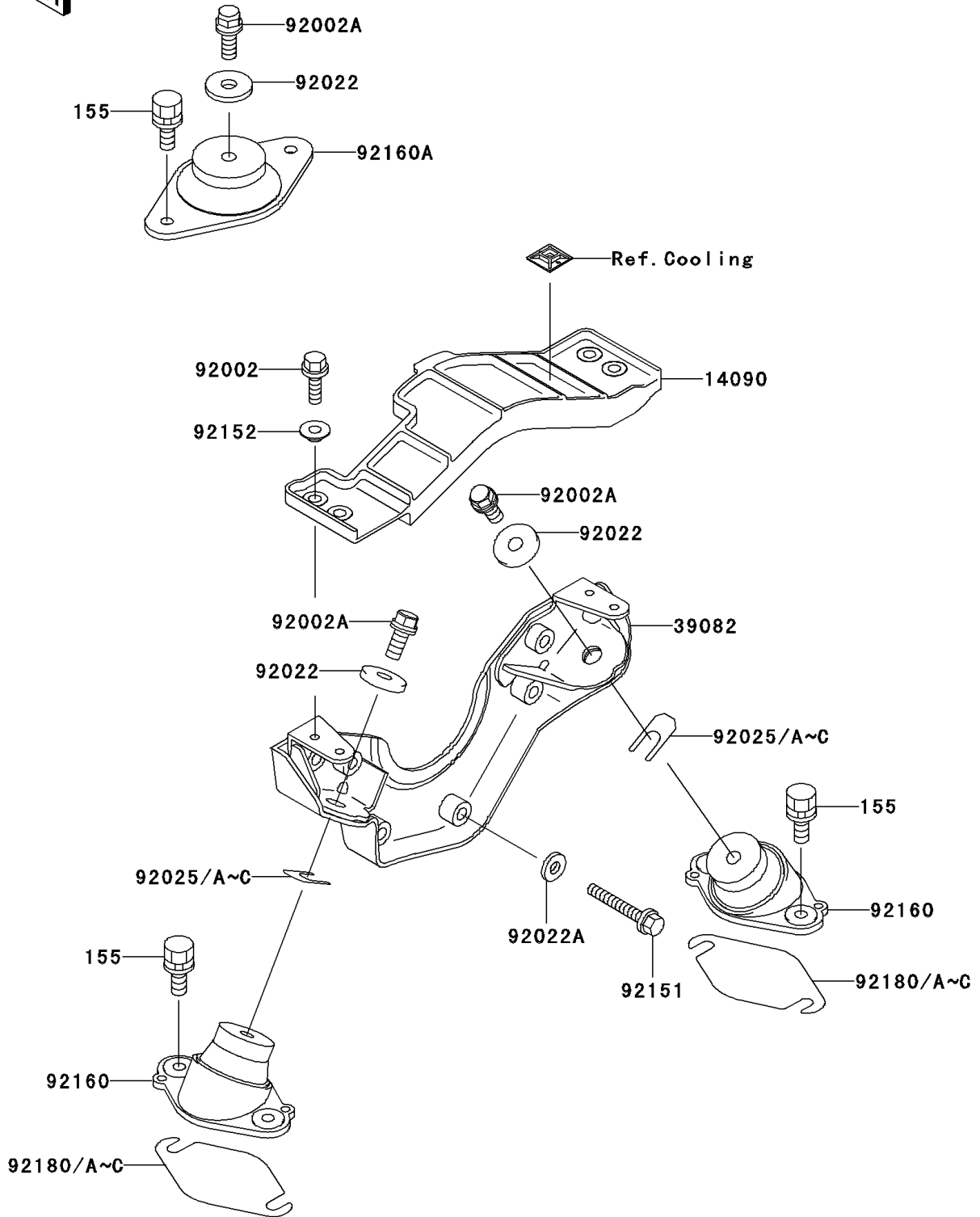


# 2001 Ultra 150 PARTS DIAGRAM

Engine Mount

F3144



## 2001 Ultra 150 PARTS LIST

### Engine Mount

| ITEM NAME                         | PART NUMBER | QUANTITY |
|-----------------------------------|-------------|----------|
| BOLT-WSP-SMALL,8X30 (Ref # 155)   | 155R0830    | 6        |
| COVER (Ref # 14090)               | 14090-3815  | 1        |
| MOUNT-ENGINE (Ref # 39082)        | 39082-3720  | 1        |
| BOLT,6X16 (Ref # 92002)           | 92002-3728  | 4        |
| BOLT,10X25 (Ref # 92002A)         | 92002-3770  | 3        |
| WASHER,32X10.5X4 (Ref # 92022)    | 92022-3023  | 3        |
| WASHER,8.2X18X1.5 (Ref # 92022A)  | 92022-3743  | 6        |
| SHIM,T=0.3MM (Ref # 92025)        | 92025-3705  | AR       |
| SHIM,T=0.5MM (Ref # 92025A)       | 92025-3706  | AR       |
| SHIM,T=1.0MM (Ref # 92025B)       | 92025-3707  | AR       |
| SHIM,T=1.5MM (Ref # 92025C)       | 92025-3708  | AR       |
| BOLT,8X35 (Ref # 92151)           | 92151-3763  | 6        |
| COLLAR (Ref # 92152)              | 92152-3712  | 4        |
| DAMPER,ENGINE MOUNT (Ref # 92160) | 92160-3838  | 2        |
| DAMPER (Ref # 92160A)             | 92160-3903  | 1        |
| SHIM,T=0.30 (Ref # 92180)         | 92180-3708  | AR       |
| SHIM,T=0.50 (Ref # 92180A)        | 92180-3709  | AR       |
| SHIM,T=1.00 (Ref # 92180B)        | 92180-3710  | AR       |
| SHIM,T=1.50 (Ref # 92180C)        | 92180-3711  | AR       |