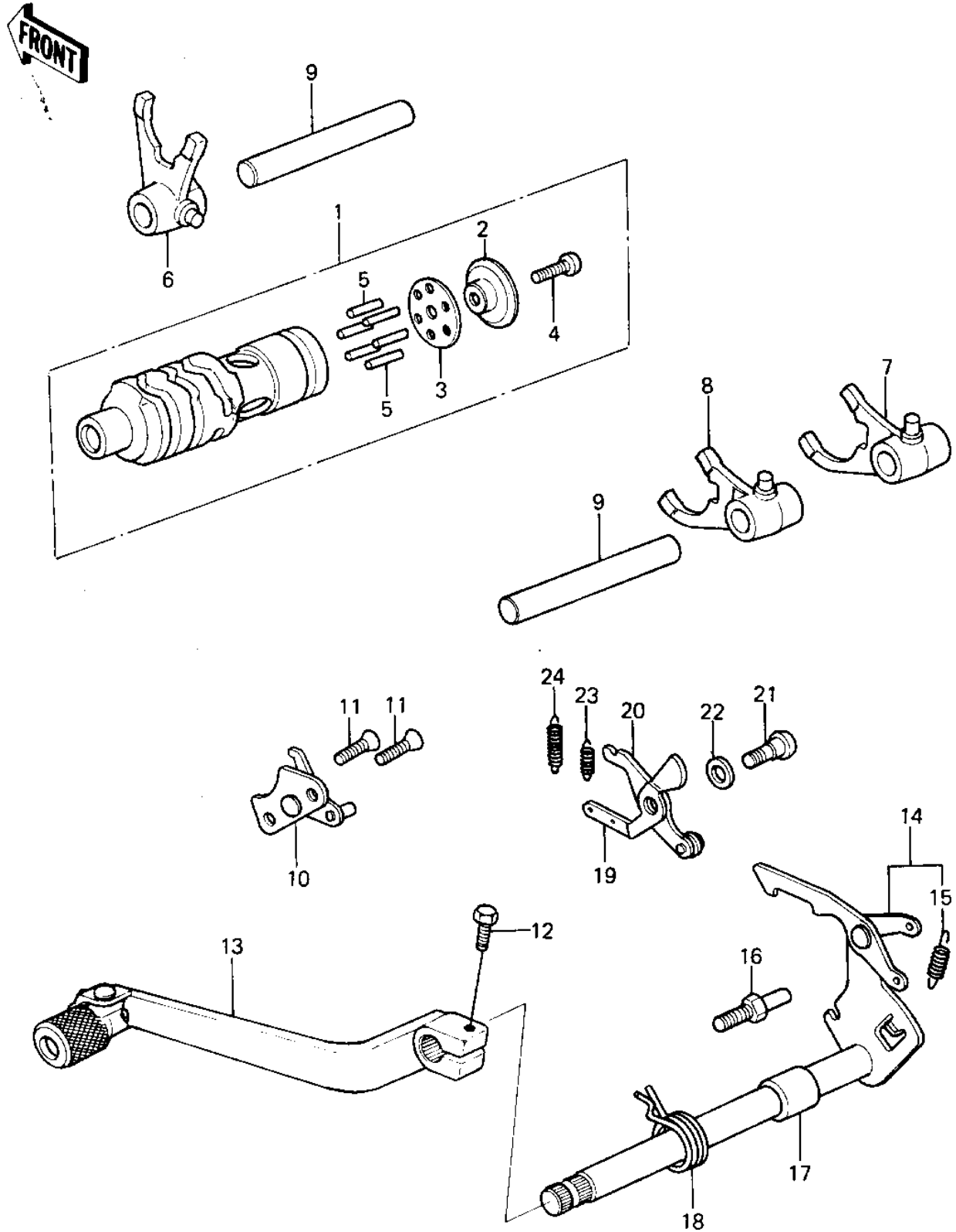


1980 KX125 PARTS DIAGRAM

GEAR CHANGE MECHANISM ('80 A6)



1980 KX125 PARTS LIST

GEAR CHANGE MECHANISM ('80 A6)

| ITEM NAME | PART NUMBER | QUANTITY |
|--|-------------|----------|
| DRUM ASSY,GEAR CHANGE (Ref # 1) | 13239-1030 | 1 |
| HOLDER, GEAR CHANGE DRUM PIN (Ref # 2) | 13142-017 | 1 |
| PLATE,GEAR CHANGE DRM (Ref # 3) | 13169-1225 | 1 |
| SCREW PAN HEAD 6X14 (Ref # 4) | 220B0614 | 1 |
| PIN,CHANGE DRUM (Ref # 5) | 92043-1060 | 6 |
| SHIFT FORK (Ref # 6) | 13140-1034 | 1 |
| SHIFT FORK (Ref # 7) | 13140-1035 | 1 |
| SHIFT FORK (Ref # 8) | 13140-1036 | 1 |
| ROD,SHIFT,10X90 (Ref # 9) | 49047-1009 | 2 |
| STOPPER ASSY,CNG DRUM (Ref # 10) | 13244-1003 | 1 |
| SCREW CNTSNK HD 6X14 (Ref # 11) | 221B0614 | 2 |
| BOLT-UPSET (Ref # 12) | 112G0622 | 1 |
| LEVER-CHANGE (Ref # 13) | 13156-1088 | 1 |
| LEVER-COMP-CHANGE (Ref # 14) | 13161-1031 | 1 |
| SPRING-CHANGE LEVER (Ref # 15) | 92081-076 | 1 |
| BOLT,RETURN SPRING (Ref # 16) | 92001-1401 | 1 |
| COLLAR,13X18.3X21.5 (Ref # 17) | 92027-1440 | 1 |
| SPRING,TENTION (Ref # 18) | 92081-1129 | 1 |
| LEVER A,GEAR CHANGE (Ref # 19) | 13168-1059 | 1 |
| LEVER B,GEAR CHANGE (Ref # 20) | 13236-1023 | 1 |
| SCREW-PAN HEAD (Ref # 21) | 92011-023 | 1 |
| WASHER,PLAIN (Ref # 22) | 92022-1053 | 1 |
| SPRING,GEAR CHANG LVR (Ref # 23) | 92081-1061 | 1 |
| SPRING (Ref # 24) | 92081-119 | 1 |