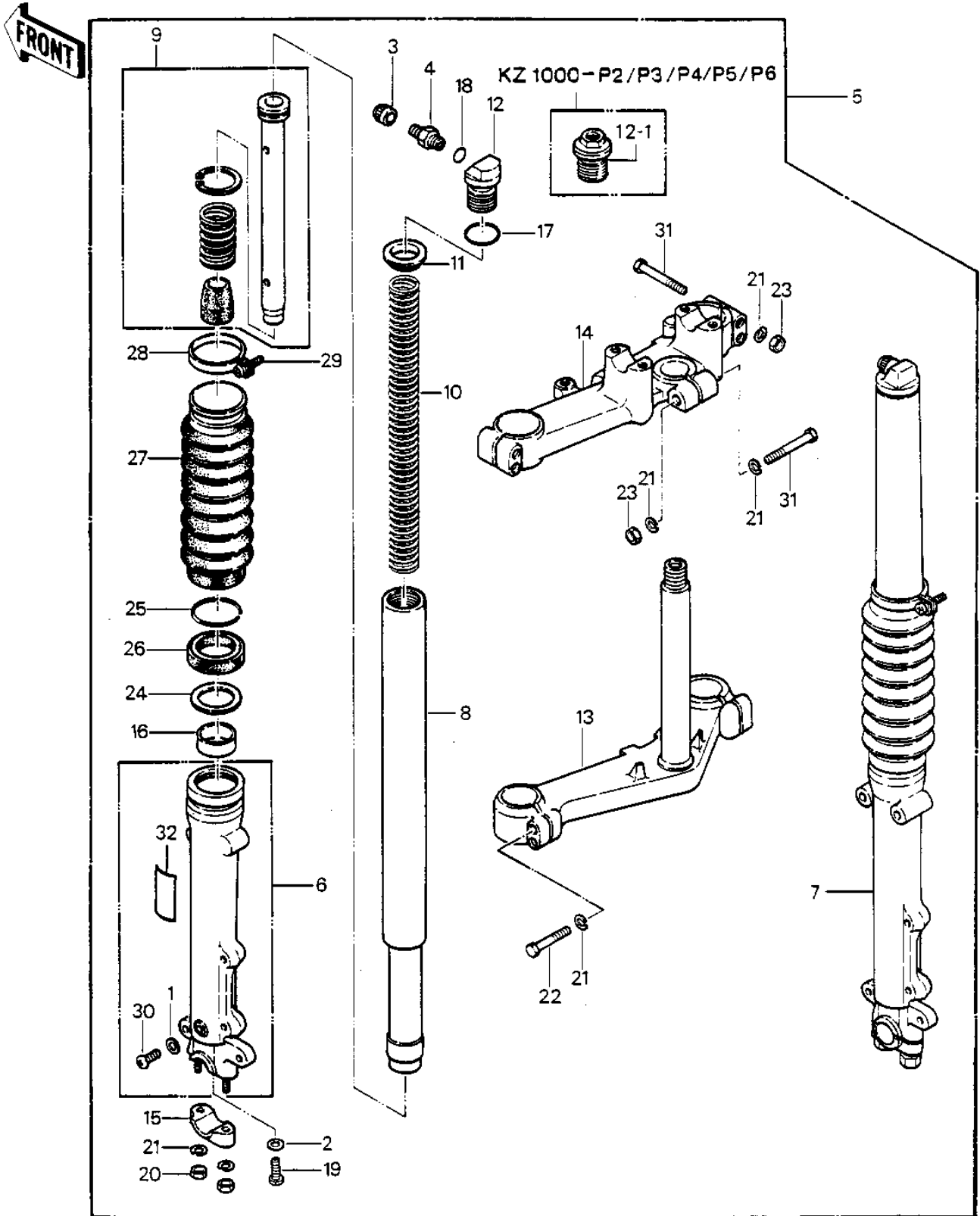


1982 Police 1000 PARTS DIAGRAM

FRONT FORK



1982 Police 1000 PARTS LIST

FRONT FORK

| ITEM NAME | PART NUMBER | QUANTITY |
|--------------------------------------|-------------|----------|
| GASKET FORK DRAIN PLG (Ref # 1) | 44045-002 | 2 |
| GASKET,FORK CYLINDER (Ref # 2) | 44045-057 | 2 |
| CAP,AIR VALVE (Ref # 3) | 11012-1241 | 2 |
| VALVE AIR (Ref # 4) | 16126-1052 | 2 |
| FORK-FRONT (Ref # 5) | 44001-1343 | 1 |
| FORK-FRONT (Ref # 5) | 44001-4011 | 1 |
| FORK-FRONT (Ref # 5) | 44001-1606 | 1 |
| TUBE,LH,FORK OUTER (Ref # 6) | 44005-1100 | 1 |
| PIPE-LEFT FORK OUTER (Ref # 6) | 44005-4002 | 1 |
| TUBE,RH,FORK OUTER (Ref # 7) | 44006-1100 | 1 |
| PIPE-RIGHT FORK OUTER (Ref # 7) | 44006-4002 | 1 |
| PIPE-FORK INNER (Ref # 8) | 44013-1097 | 2 |
| PIPE-FORK INNER (Ref # 8) | 44013-4002 | 2 |
| CYLINDER-FORK (Ref # 9) | 44022-1083 | 2 |
| CYLINDER-FORK (Ref # 9) | 44022-1071 | 2 |
| SPRING-FRONT FORK (Ref # 10) | 44026-1154 | 2 |
| SPRING-FRONT FORK (Ref # 10) | 44026-4002 | 2 |
| SPRING-FRONT FORK (Ref # 10) | 44026-1312 | 2 |
| GUIDE,FORK SPRING (Ref # 11) | 44028-033 | 2 |
| SEAT-FORK SPRING (Ref # 12) | 44029-1029 | 2 |
| SEAT-FORK SPRING (Ref # 12-1) | 44029-4001 | 2 |
| HOLDER-FORK UNDER (Ref # 13) | 44037-1087 | 1 |
| HOLDER-FORK UNDER (Ref # 13) | 44037-4004 | 1 |
| UNAVAILABLE IN PRICE BOOK (Ref # 14) | 44029-1056 | 1 |
| HOLDER-FORK UPPER (Ref # 14) | 44039-4007 | 1 |
| HOLDER-FRONT AXLE (Ref # 15) | 44063-1006 | 2 |
| HOLDER,FRONT AXLE (Ref # 15) | 44063-011 | 2 |
| BUSHING-FRONT FORK,OU (Ref # 16) | 44065-1091 | 2 |
| "O" RING,FORK TOP (Ref # 17) | 92055-1012 | 2 |

1982 Police 1000 PARTS LIST

FRONT FORK

| ITEM NAME | PART NUMBER | QUANTITY |
|----------------------------------|-------------|----------|
| "0" RING,AIR VALVE (Ref # 18) | 92055-1094 | 2 |
| BOLT-FORK CYLINDER (Ref # 19) | 44041-040 | 2 |
| NUT,LOCK,8MM (Ref # 20) | 92015-1124 | 4 |
| WASHER SPRING 8MM (Ref # 21) | 461F0800 | 13 |
| BOLT,8X38 (Ref # 22) | 92001-1700 | 4 |
| NUT 8MM (Ref # 23) | 311G0800 | 5 |
| WASHER,FORK OUT PIPE (Ref # 24) | 92022-1262 | 2 |
| SNAP RING,FORK OUTER (Ref # 25) | 92033-1047 | 2 |
| SEAL-OIL,FORK OUTER T (Ref # 26) | 92049-1295 | 2 |
| BOOT,FORK,BLACK (Ref # 27) | 49006-1079 | 2 |
| BAND,BOOT (Ref # 28) | 92072-1046 | 2 |
| CLAMP, BOOT, BLACK (Ref # 28) | 92037-1321 | 2 |
| SCREW-PAN-CROS (Ref # 29) | 220B0420 | 2 |
| SCREW PAN HEAD 4X8 (Ref # 30) | 220B0408 | 2 |
| BOLT,HEX HEAD,8X55 (Ref # 31) | 114G0855 | 5 |
| LABEL-WARNING,FRONT F (Ref # 32) | 56040-1110 | 1 |