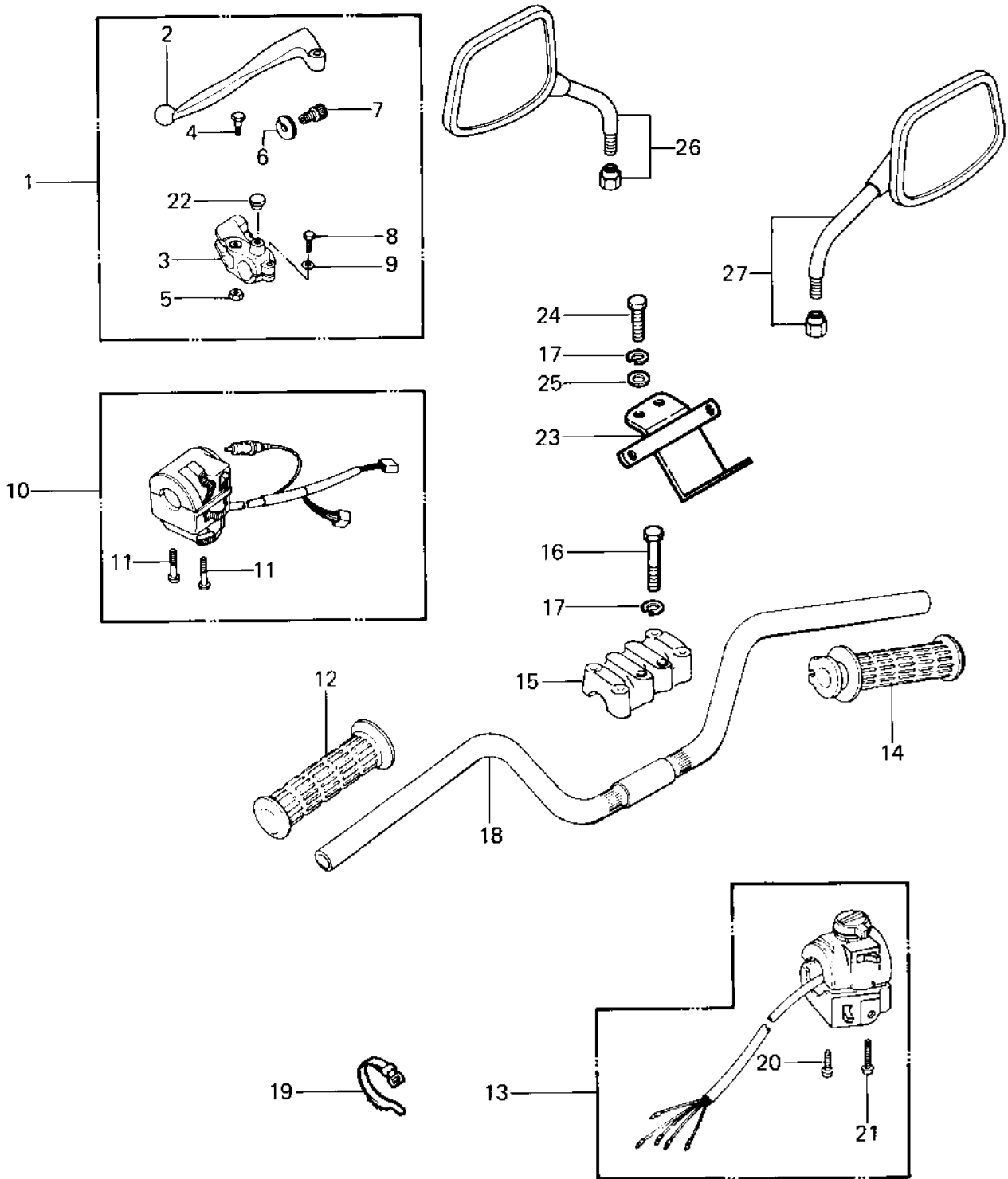


# 1982 Police 1000 PARTS DIAGRAM

## HANDLEBAR



# 1982 Police 1000 PARTS LIST

## HANDLEBAR

ITEM NAME	PART NUMBER	QUANTITY
LEVER-ASSY-GRIP,CLTCH (Ref # 1)	46076-1019	1
LEVER,CLUTCH (Ref # 2)	46092-1005	1
HOLDER,CLUTCH LEVER (Ref # 3)	13091-1046	1
BOLT,CLUTCH LEVER FIT (Ref # 4)	92001-1075	1
NUT (Ref # 5)	92019-008	1
NUT-LOCK (Ref # 6)	46056-005	1
SCREW,CABLE ADJUSTER (Ref # 7)	92009-1022	1
SCREW CABLE ADJUST (Ref # 7)	46055-003	1
BOLT, HEX HEAD 6X22 (Ref # 8)	110N0622	1
WASHER PLAIN 6MM (Ref # 9)	410B0600	1
HOUSING-ASSY-CONTROL, (Ref # 10)	46091-1455	1
SCREW-PAN-CROS (Ref # 11)	220B0535	2
GRIP,LH (Ref # 12)	46075-1020	1
HOUSING-ASSY-CNTRL,RH (Ref # 13)	46091-1212	1
GRIP-ASSY (Ref # 14)	46019-1022	1
HOLDER-HANDLE (Ref # 15)	46012-4001	1
BOLT 8X38 (Ref # 16)	92001-1405	4
BOLT,FLANGED,8X35 (Ref # 16)	92001-1910	4
WASHER SPRING 8MM (Ref # 17)	461F0800	6
WASHER SPRING 8MM (Ref # 17)	461F0800	2
HANDLE (Ref # 18)	46003-4008	1
HANDLE (Ref # 18)	46003-4008	1
BAND,MIDDLE (Ref # 19)	92072-031	4
SCREW PAN HEAD 5X30 (Ref # 20)	220B0530	1
SCREW-PAN-CROS (Ref # 21)	220B0540	1
CAP-RR VIEW MIRROR (Ref # 22)	92102-009	2
BRACKET,SIREN (OPT) (Ref # 23)	23062-4003	1
BOLT HEAD LAMP MOUNT (Ref # 24)	92007-003	2
WASHER PLAIN 8MM (Ref # 25)	410B0800	2