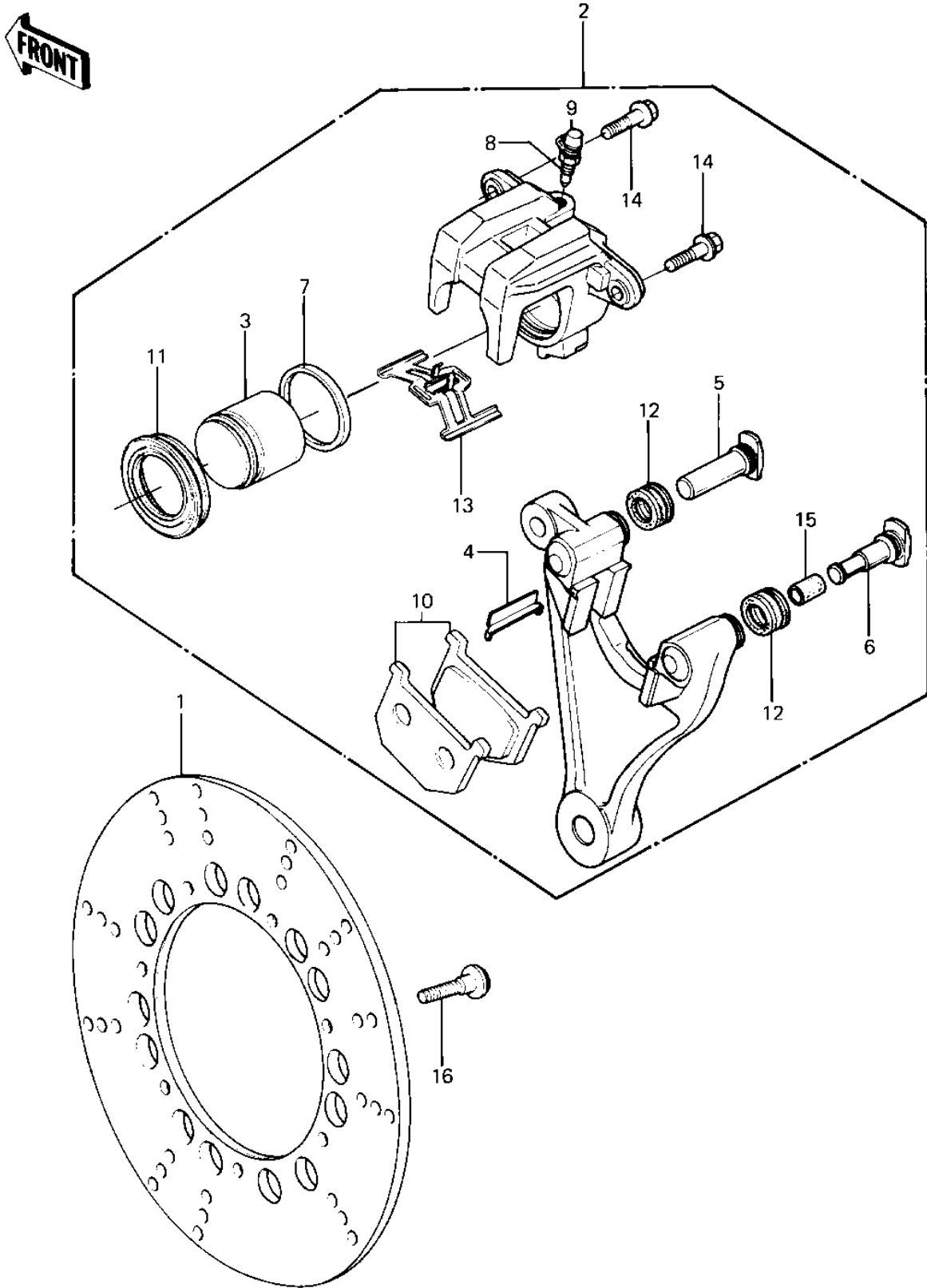


1982 Police 1000 PARTS DIAGRAM

REAR BRAKE



1982 Police 1000 PARTS LIST

REAR BRAKE

| ITEM NAME | PART NUMBER | QUANTITY |
|----------------------------------|-------------|----------|
| DISC,RR,SILVER (Ref # 1) | 41080-1128 | 1 |
| DISC,RR,SILVER (Ref # 2) | 41080-1128 | 1 |
| CALIPER-ASSY,RR (Ref # 2) | 43041-1047 | 1 |
| PISTON-COMP-BRAKE (Ref # 3) | 43020-1096 | 1 |
| GUIDE,PAD (Ref # 4) | 13070-1026 | 2 |
| SHAFT,CALIPER (Ref # 5) | 43045-1007 | 1 |
| SHAFT,CALIPER (Ref # 6) | 43045-1008 | 1 |
| RING,PISTON SEAL (Ref # 7) | 43049-002 | 1 |
| BREEDER (Ref # 8) | 43056-003 | 1 |
| CAP,BREEDER (Ref # 9) | 43057-003 | 1 |
| PAD-ASSY,RR (Ref # 10) | 43082-1022 | 1 |
| DUST SEAL,PISTON (Ref # 11) | 49006-1043 | 1 |
| DUST SEAL (Ref # 12) | 49006-1044 | 2 |
| SPRING,PAD (Ref # 13) | 92081-1229 | 1 |
| BOLT,FLANGED,8X25,BLA (Ref # 14) | 92001-1510 | 2 |
| BOLT,FLANGED,8X25,BLA (Ref # 14) | 92001-1510 | 2 |
| BUSHING,SHAFT CALIPER (Ref # 15) | 92028-1090 | 1 |
| BOLT,SOCKET,8X30 (Ref # 16) | 92001-1951 | 7 |
| BOLT,SOCKET,8X30 (Ref # 16) | 92001-1951 | 7 |