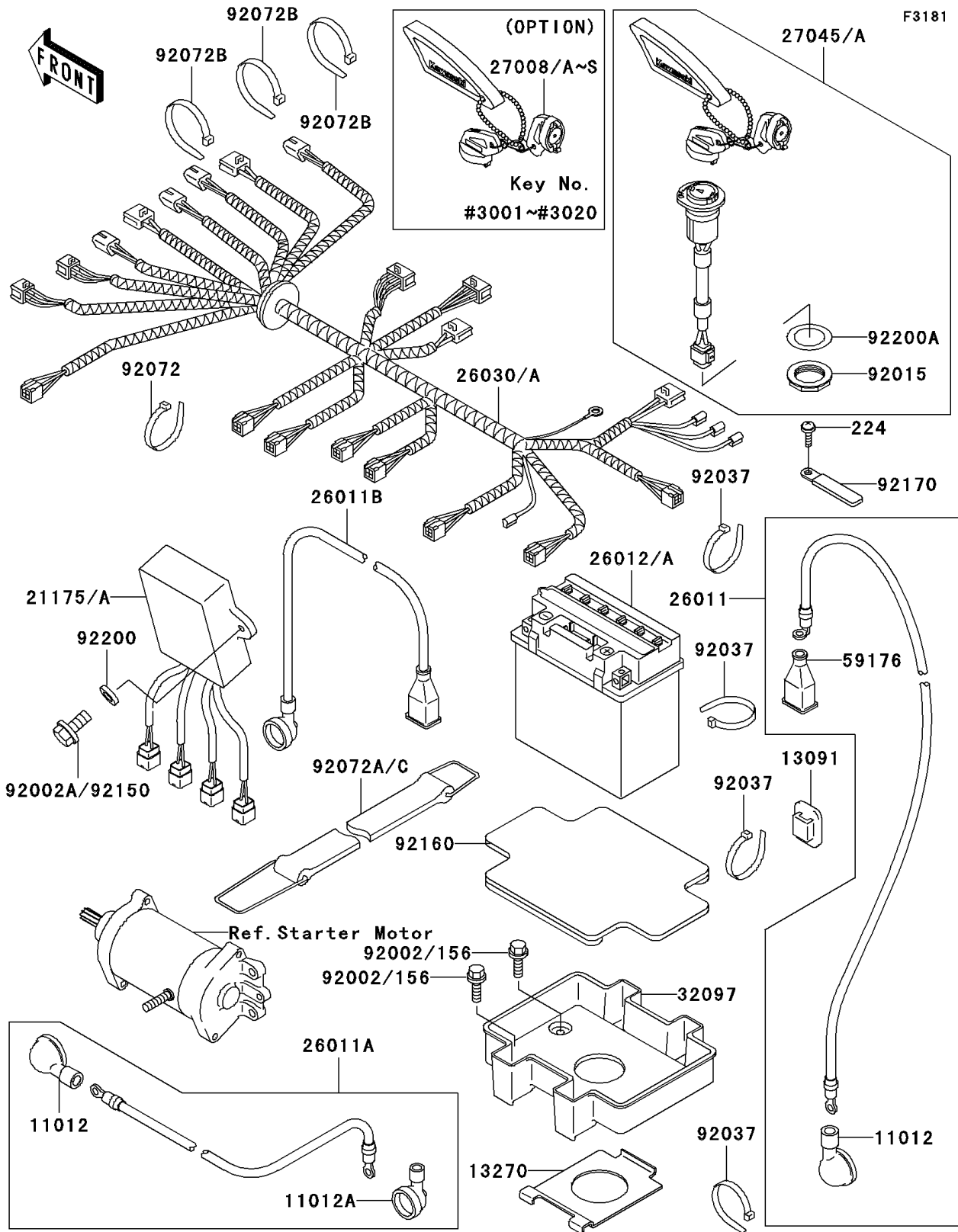


1996 1100 ZXi PARTS DIAGRAM

Electrical Equipment



1996 1100 ZXi PARTS LIST

Electrical Equipment

ITEM NAME	PART NUMBER	QUANTITY
CAP (Ref # 11012)	11012-3004	2
CAP,LEAD WIRE (Ref # 11012A)	11012-3726	1
HOLDER,BAND (Ref # 13091)	13091-3764	1
CONTROL UNIT-ELECTRONIC (Ref # 21175)	21175-3704	1
WIRE-LEAD,STARTER-BATTERY (Ref # 26011)	26011-3796	1
WIRE-LEAD,RELAY-STARTER (Ref # 26011A)	26011-3797	1
WIRE-LEAD,BATTERY(+) (Ref # 26011B)	26011-3825	1
BATTERY,YTX20L-BS,12V 18AH (Ref # 26012)	26012-3721	1
HARNESS,MAIN (Ref # 26030)	26030-3709	1
KEY-LOCK,MAGNETIC SW,#3001 (Ref # 27008)	27008-3745	1
KEY-LOCK,MAGNETIC SW,#3002 (Ref # 27008A)	27008-3746	1
KEY-LOCK,MAGNETIC SW,#3003 (Ref # 27008B)	27008-3747	1
KEY-LOCK,MAGNETIC SW,#3004 (Ref # 27008C)	27008-3748	1
KEY-LOCK,MAGNETIC SW,#3005 (Ref # 27008D)	27008-3749	1
KEY-LOCK,MAGNETIC SW,#3006 (Ref # 27008E)	27008-3750	1
KEY-LOCK,MAGNETIC SW,#3007 (Ref # 27008F)	27008-3751	1
KEY-LOCK,MAGNETIC SW,#3008 (Ref # 27008G)	27008-3752	1
KEY-LOCK,MAGNETIC SW,#3009 (Ref # 27008H)	27008-3753	1
KEY-LOCK,MAGNETIC SW,#3010 (Ref # 27008I)	27008-3754	1
KEY-LOCK,MAGNETIC SW,#3011 (Ref # 27008J)	27008-3755	1
KEY-LOCK,MAGNETIC SW,#3012 (Ref # 27008K)	27008-3756	1
KEY-LOCK,MAGNETIC SW,#3013 (Ref # 27008L)	27008-3757	1
KEY-LOCK,MAGNETIC SW,#3014 (Ref # 27008M)	27008-3758	1
KEY-LOCK,MAGNETIC SW,#3015 (Ref # 27008N)	27008-3759	1
BOLT-WP,6X16 (Ref # 156)	156R0616	4
KEY-LOCK,MAGNETIC SW,#3016 (Ref # 27008O)	27008-3760	1
KEY-LOCK,MAGNETIC SW,#3017 (Ref # 27008P)	27008-3761	1
KEY-LOCK,MAGNETIC SW,#3018 (Ref # 27008Q)	27008-3762	1
KEY-LOCK,MAGNETIC SW,#3019 (Ref # 27008R)	27008-3763	1

1996 1100 ZXi PARTS LIST

Electrical Equipment

ITEM NAME	PART NUMBER	QUANTITY
KEY-LOCK,MAGNETIC SW,#3020 (Ref # 27008S)	27008-3764	1
SWITCH-ASSY,MAIN (Ref # 27045)	27045-3714	1
CASE-BATTERY (Ref # 32097)	32097-3703	1
CAP.,TERMINAL (Ref # 59176)	59176-501	1
NUT (Ref # 92015)	92015-3848	1
CLAMP (Ref # 92037)	92037-1173	5
BAND (Ref # 92072)	92072-3778	4
BAND,BATTERY (Ref # 92072A)	92072-3787	2
BAND (Ref # 92072B)	92072-3799	3
BOLT,6X20 (Ref # 92150)	92150-3758	2
DAMPER,BATTERY (Ref # 92160)	92160-3860	1
WASHER,6.5X16X1.0 (Ref # 92200)	92200-3712	2
WASHER (Ref # 92200A)	92200-3736	1