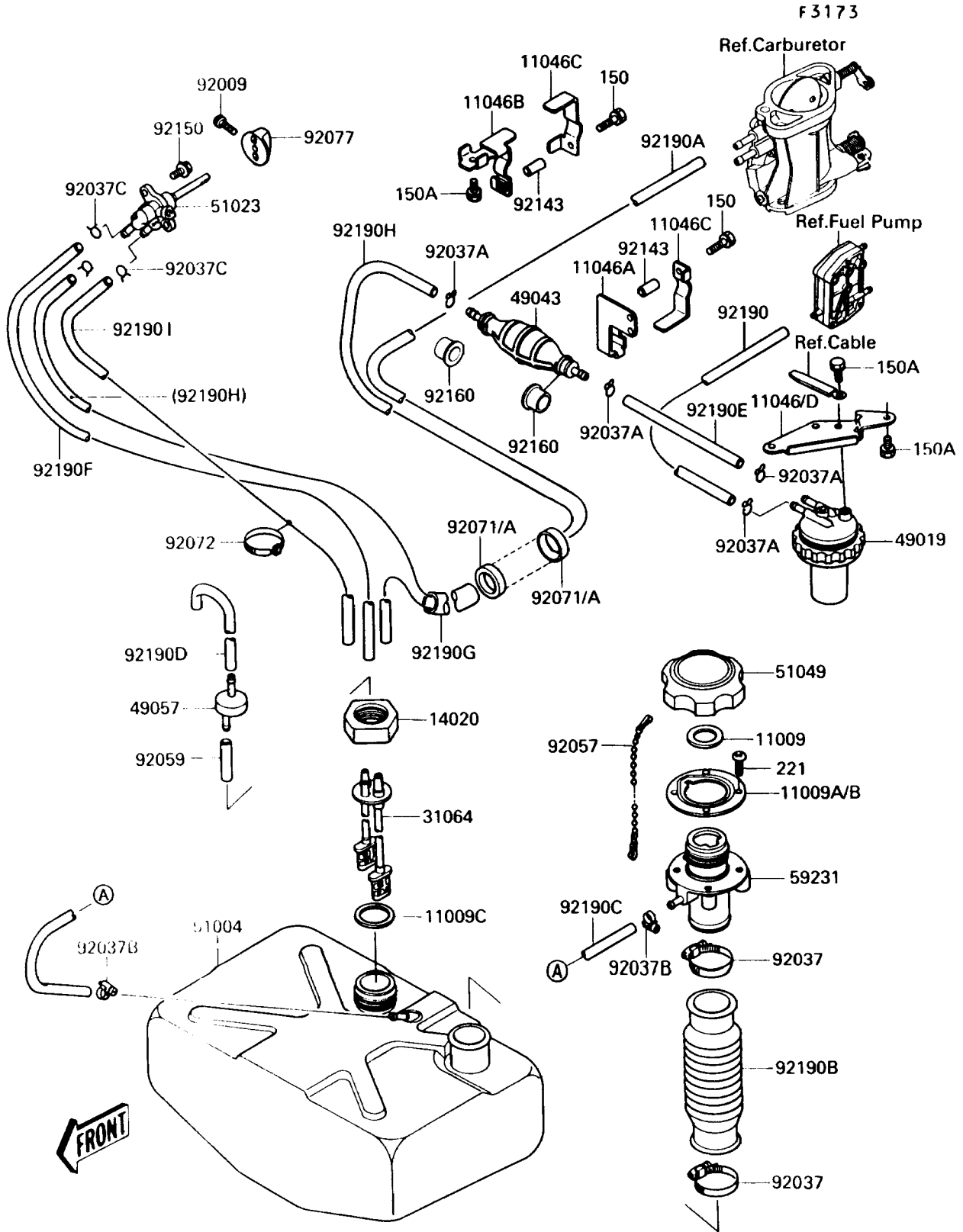


# 1990 TS PARTS DIAGRAM

Fuel Tank



# 1990 TS PARTS LIST

## Fuel Tank

ITEM NAME	PART NUMBER	QUANTITY
GASKET,TANK CAP (Ref # 11009)	11009-3020	1
GASKET,FILLER (Ref # 11009B)	11009-3771	1
GASKET (Ref # 11009C)	92065-504	1
BRACKET,PUMP PRIMING (Ref # 11046A)	11046-3806	1
BRACKET,PUMP PRIMING (Ref # 11046B)	11046-3811	1
BRACKET,PUMP PRIMING (Ref # 11046C)	11046-3813	2
BRACKET,FUEL FILTER (Ref # 11046D)	11046-3842	1
RETAINER (Ref # 14020)	23072-501	1
PIPE-COMP,FUEL TANK (Ref # 31064)	31064-3711	1
FILTER-FUEL (Ref # 49019)	49019-3708	1
PUMP-PRIMING (Ref # 49043)	49043-3702	1
VALVE-RELIEF (Ref # 49057)	49057-3001	1
TANK-FUEL (Ref # 51004)	51004-3709	1
TAP-ASSY,FUEL (Ref # 51023)	51023-3709	1
CAP-TANK,FUEL (Ref # 51049)	51049-3714	1
FILLER (Ref # 59231)	59231-3708	1
SCREW,4X8 (Ref # 92009)	92009-3729	1
CLAMP (Ref # 92037)	92037-3009	2
CLAMP,11MM (Ref # 92037A)	92037-3723	4
CLAMP (Ref # 92037B)	92037-3726	2
CLAMP (Ref # 92037C)	92037-3727	3
CHAIN,COVER,L=100 (Ref # 92057)	92057-3704	1
TUBE,5.8X12.2X55 (Ref # 92059)	92059-3026	1
GROMMET (Ref # 92071A)	92071-3771	2
BAND,L=123 (Ref # 92072)	92072-030	1
KNOB (Ref # 92077)	92077-3709	1
COLLAR,6X8.5X13 (Ref # 92143)	92143-3715	2
BOLT,5X14 (Ref # 92150)	92150-3702	2
DAMPER (Ref # 92160)	92160-3752	2

# 1990 TS PARTS LIST

## Fuel Tank

ITEM NAME	PART NUMBER	QUANTITY
TUBE,5.8X10.8X270 (Ref # 92190)	92059-3858	1
TUBE,5.8X10.8X1040 (Ref # 92190A)	92059-3861	1
TUBE (Ref # 92190B)	92059-3869	1
TUBE,5.8X10.8X440 (Ref # 92190C)	92059-3882	1
TUBE,RELIEF VALVE (Ref # 92190D)	92059-3883	1
TUBE,5.8X10.8X152 (Ref # 92190E)	92059-3885	1
TUBE,5.8X10.8X380 (Ref # 92190F)	92059-3886	1
TUBE,22X24X250 (Ref # 92190G)	92190-3710	1
TUBE,5.8X10.8X1130 (Ref # 92190H)	92190-3715	1
TUBE,5.8X10.8X370 (Ref # 92190I)	92190-3716	1
BOLT-WS,5X25 (Ref # 150)	150R0525	2
BOLT-WS,6X12 (Ref # 150A)	150R0612	5
SCREW-CSK-CROS,5X20 (Ref # 221)	221R0520	4