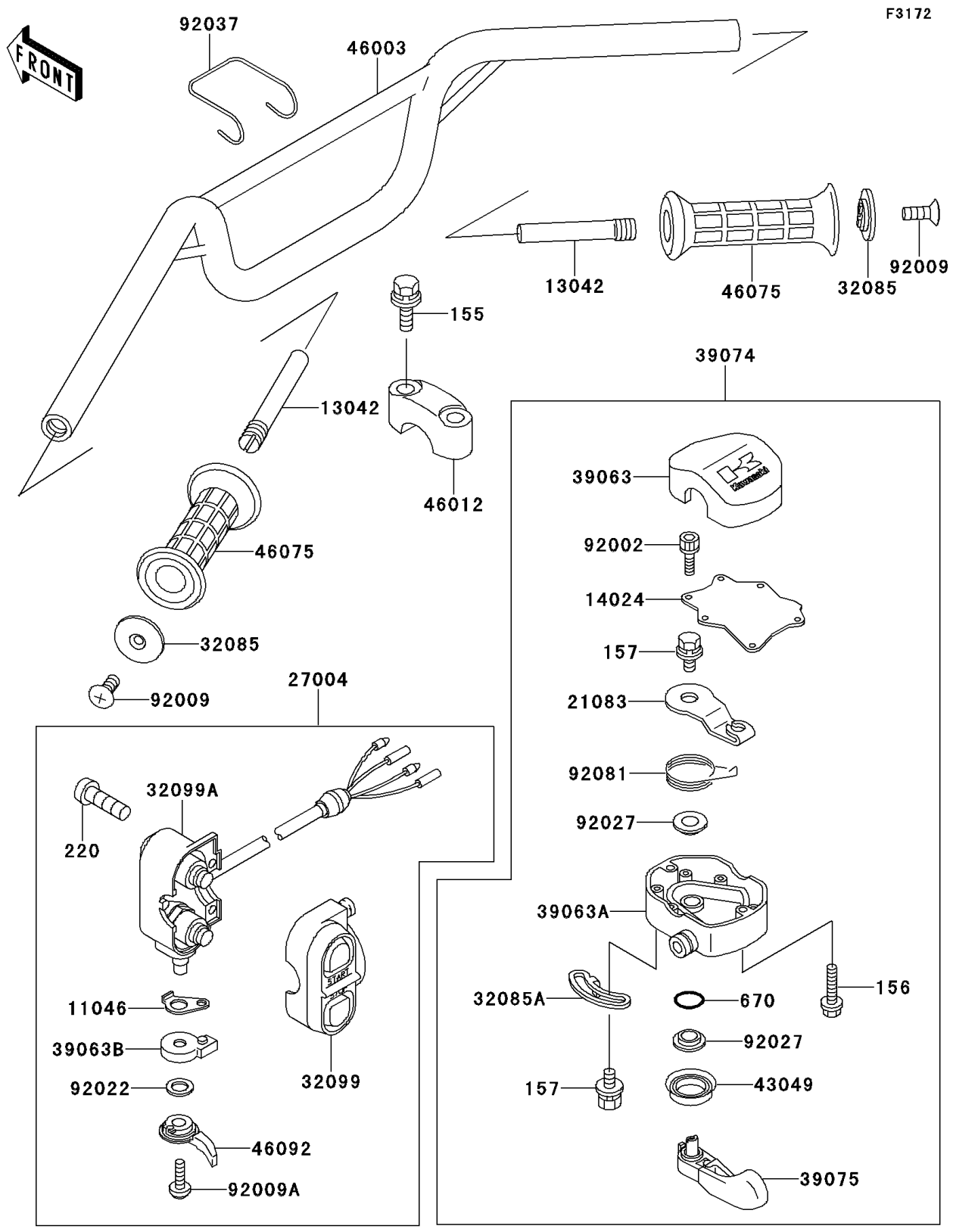


1991 X2 PARTS DIAGRAM

Handlebar



1991 X2 PARTS LIST

Handlebar

ITEM NAME	PART NUMBER	QUANTITY
BOLT-WSP-SMALL,8X35 (Ref # 155)	155R0835	4
BOLT-WP,5X25 (Ref # 156)	156R0525	2
BOLT-WSP,5X12 (Ref # 157)	157R0512	2
SCREW-PAN-CROS,5X30 (Ref # 220)	220R0530	2
O RING,8MM (Ref # 670)	670B1508	1
BRACKET (Ref # 11046)	11046-3707	1
WEIGHT,HANDLE (Ref # 13042)	13042-3701	2
COVER,THROTTLE LEVER (Ref # 14024)	14024-3701	1
ARM,THROTTLE LEVER (Ref # 21083)	21083-3701	1
SWITCH-ASSY (Ref # 27004)	27004-3713	1
STOPPER (Ref # 32085)	32085-3705	2
STOPPER (Ref # 32085A)	32085-3709	1
CASE,FR,SWITCH (Ref # 32099)	32099-3721	1
CASE,RR SWITCH (Ref # 32099A)	32099-3751	1
HOUSING-CONTROL,UPP (Ref # 39063)	39063-3703	1
HOUSING-CONTROL,LWR (Ref # 39063A)	39063-3707	1
HOUSING-CONTROL,STARTER CABLE (Ref # 39063B)	39063-3712	1
LEVER-ASSY-THROTTLE (Ref # 39074)	39074-3711	1
LEVER-THROTTLE (Ref # 39075)	39075-3704	1
PACKING,THROTTLE LEVER (Ref # 43049)	43049-3701	1
HANDLE (Ref # 46003)	46003-3712	1
HOLDER-HANDLE,UPP (Ref # 46012)	46012-3720	2
GRIP,HANDLEBAR (Ref # 46075)	46075-3713	2
LEVER-GRIP,STARTER (Ref # 46092)	46092-1116	1
BOLT,SOCKET,3X10 (Ref # 92002)	92002-3751	6
SCREW,6X16 (Ref # 92009)	92009-3703	2
SCREW,5X10 (Ref # 92009A)	92009-3713	1
WASHER,WAVE (Ref # 92022)	92022-3735	1
COLLAR,THROTTLE LEVER (Ref # 92027)	92027-3704	2

1991 X2 PARTS LIST

Handlebar

ITEM NAME	PART NUMBER	QUANTITY
CLAMP,CABLE (Ref # 92037)	92037-3734	1
SPRING,THROTTLE LEVER RETURN (Ref # 92081)	92081-3702	1