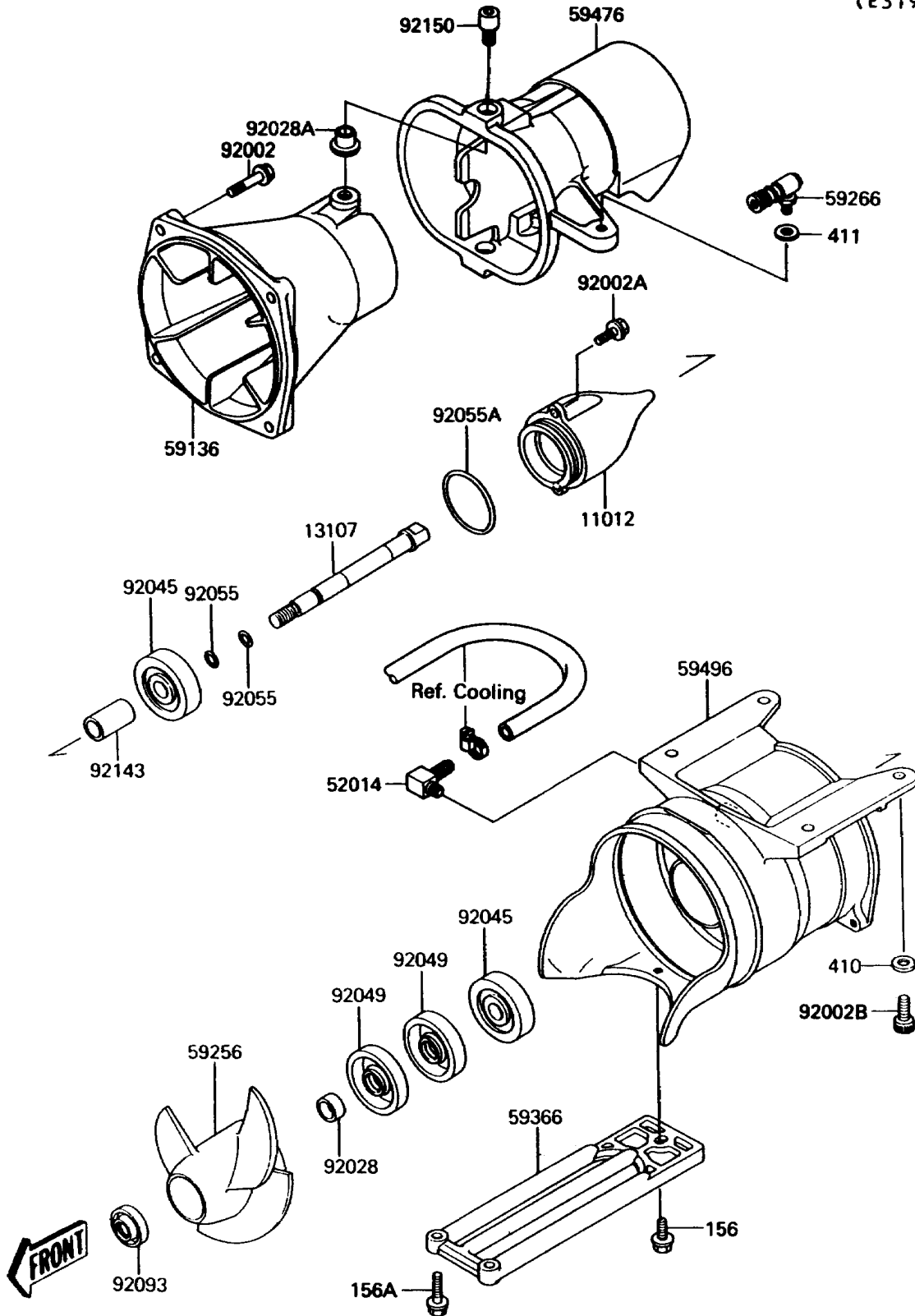


# 1991 Jet Mate PARTS DIAGRAM

Jet Pump

(E3191)



# 1991 Jet Mate PARTS LIST

## Jet Pump

| ITEM NAME                           | PART NUMBER | QUANTITY |
|-------------------------------------|-------------|----------|
| CAP,JET PUMP (Ref # 11012)          | 11012-3712  | 1        |
| SHAFT,JET PUMP (Ref # 13107)        | 13107-3721  | 1        |
| ELBOW (Ref # 52014)                 | 52014-3002  | 1        |
| NOZZLE-PUMP (Ref # 59136)           | 59136-3709  | 1        |
| IMPELLER (Ref # 59256)              | 59256-3714  | 1        |
| JOINT-BALL (Ref # 59266)            | 59266-3701  | 1        |
| GRATE (Ref # 59366)                 | 59366-3702  | 1        |
| NOZZLE-STRG (Ref # 59476)           | 59476-3710  | 1        |
| VANE-GUIDE (Ref # 59496)            | 59496-3701  | 1        |
| BOLT,6X25 (Ref # 92002)             | 92002-3714  | 4        |
| BOLT,6X16 (Ref # 92002A)            | 92002-3728  | 2        |
| BOLT,SOCKET,8X20 (Ref # 92002B)     | 92002-3771  | 4        |
| BUSHING,17X25X15 (Ref # 92028)      | 92028-3717  | 1        |
| BUSHING (Ref # 92028A)              | 92028-3740  | 2        |
| BEARING-BALL,#63032RD (Ref # 92045) | 92045-3706  | 2        |
| SEAL-OIL,TCV-25476 (Ref # 92049)    | 92049-3711  | 2        |
| RING-O,13X1.9 (Ref # 92055)         | 92055-1021  | 2        |
| RING-O (Ref # 92055A)               | 92055-3706  | 1        |
| SEAL (Ref # 92093)                  | 92093-3702  | 1        |
| COLLAR,17.4X25.4X53 (Ref # 92143)   | 92143-3708  | 1        |
| BOLT (Ref # 92150)                  | 92150-3790  | 2        |
| BOLT-WP,6X12 (Ref # 156)            | 156R0612    | 1        |
| BOLT-WP,6X25 (Ref # 156A)           | 156R0625    | 2        |
| WASHER-PLAIN-SMALL,8MM (Ref # 410)  | 410S0800    | 4        |
| WASHER-PLAIN,6MM (Ref # 411)        | 411S0600    | 1        |