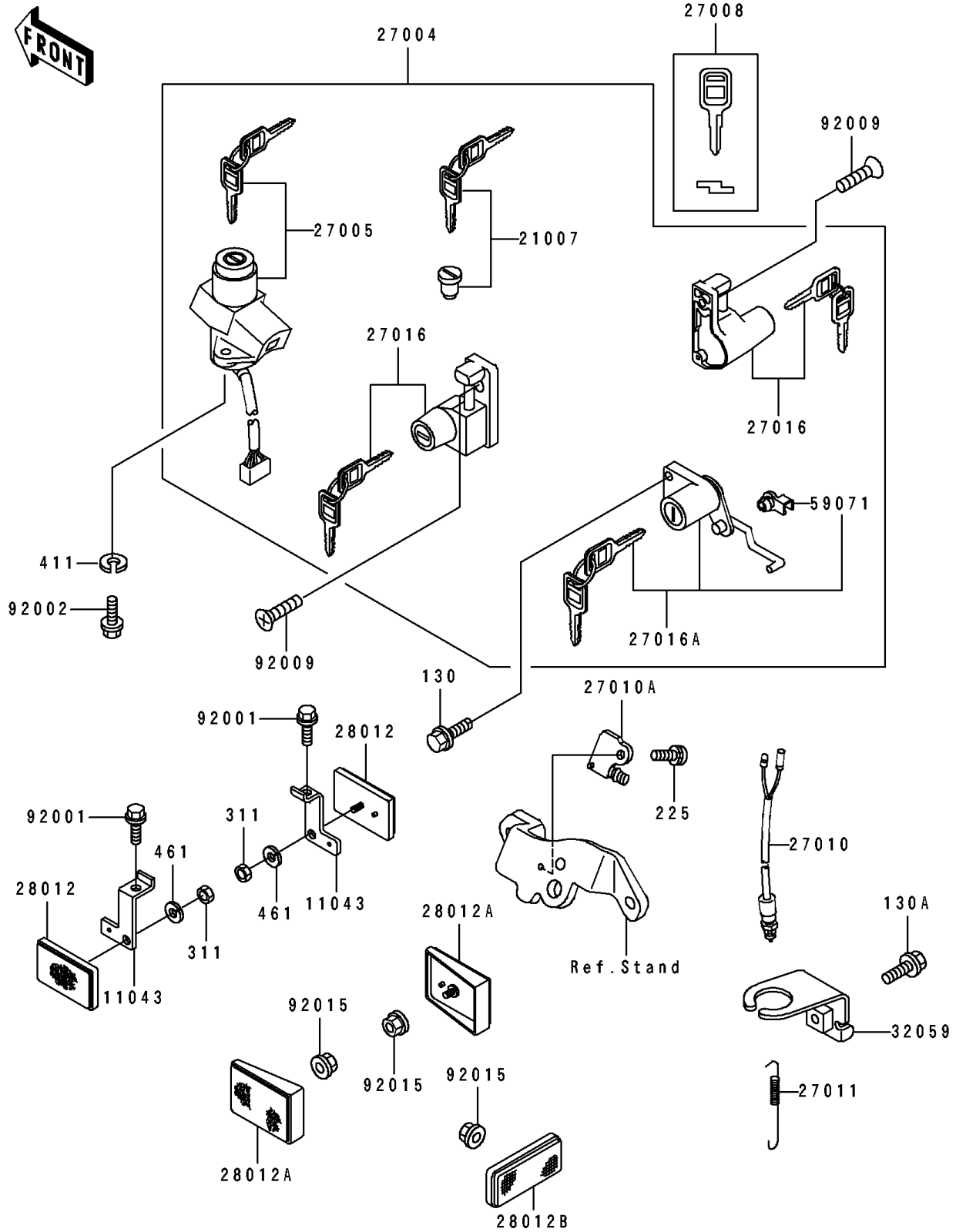


## 1992 EX500 PARTS DIAGRAM

Ignition Switch/Locks/Reflectors

F2770



## 1992 EX500 PARTS LIST

Ignition Switch/Locks/Reflectors

| ITEM NAME                               | PART NUMBER | QUANTITY |
|---|-------------|----------|
| BRACKET,FR,REFLECTOR (Ref # 11043)      | 11043-1423  | 1        |
| ROTOR,LOCK,TANK CAP (Ref # 21007)       | 21007-5012  | 1        |
| SWITCH-ASSY (Ref # 27004)               | 27004-5329  | 1        |
| SWITCH-ASSY-IGNITION (Ref # 27005)      | 27005-5074  | 1        |
| KEY-LOCK,BLANK (Ref # 27008)            | 27008-1103  | 1        |
| SWITCH,REAR BRAKE (Ref # 27010)         | 27010-1019  | 1        |
| SWITCH,BRAKE/SIDE STAND (Ref # 27010A)  | 27010-1185  | 1        |
| SPRING,BRAKE LAMP SWITCH (Ref # 27011)  | 27011-006   | 1        |
| LOCK-ASSY,HELMET (Ref # 27016)          | 27016-5091  | 1        |
| LOCK-ASSY,SEAT (Ref # 27016A)           | 27016-5123  | 1        |
| REFLECTOR-REFLEX (Ref # 28012)          | 28012-1003  | 1        |
| REFLECTOR-REFLEX,RR (Ref # 28012A)      | 28012-1056  | 1        |
| REFLECTOR-REFLEX (Ref # 28012B)         | 28012-1077  | 1        |
| BRACKET-SWITCH,REAR BRAKE (Ref # 32059) | 32059-1091  | 1        |
| JOINT (Ref # 59071)                     | 59071-1103  | 1        |
| BOLT,6X14,BLACK (Ref # 92001)           | 92001-1847  | 1        |
| BOLT,TORX,6X16 (Ref # 92002)            | 92002-1333  | 1        |
| SCREW,5X18 (Ref # 92009)                | 92009-1305  | 1        |
| NUT,FLANGED,5MM (Ref # 92015)           | 92015-1259  | 1        |
| BOLT-FLANGED (Ref # 130)                | 130B0510    | 1        |
| BOLT-FLANGED,6X14 (Ref # 130A)          | 130C0614    | 1        |
| SCREW-PAN-WSP-CROS (Ref # 225)          | 225C0416    | 1        |
| NUT-HEX (Ref # 311)                     | 311B0500    | 1        |
| WASHER-PLAIN,6MM (Ref # 411)            | 411E0600    | 1        |
| WASHER-SPRING,5MM (Ref # 461)           | 461F0500    | 1        |