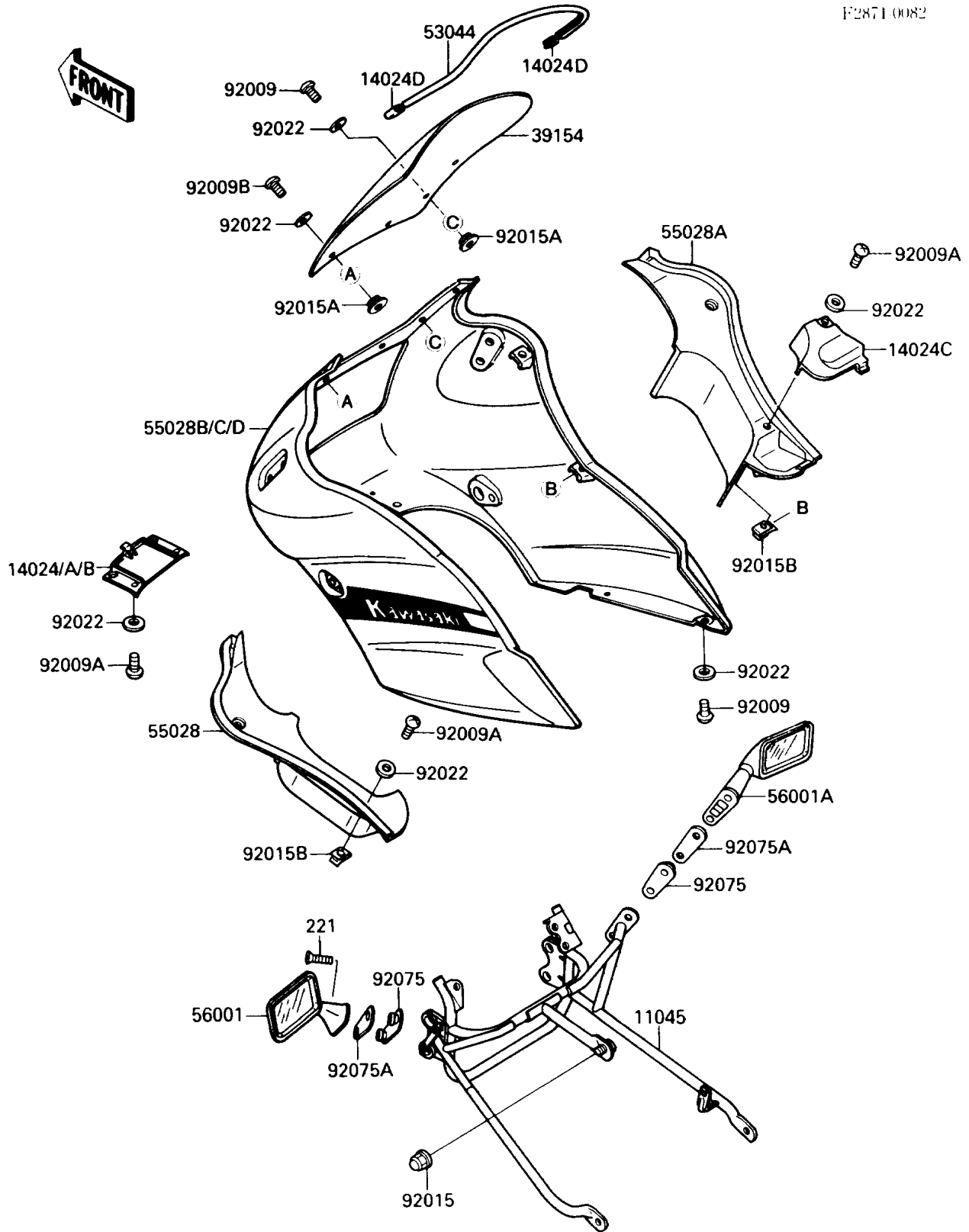


# 1987 EX500 PARTS DIAGRAM

Cowling(EX500-A1)

F28710082



# 1987 EX500 PARTS LIST

Cowling(EX500-A1)

ITEM NAME	PART NUMBER	QUANTITY
BRACKET,COWLING (Ref # 11045)	11045-1816	1
COVER,UPPER COWLING,LWR,WHITE (Ref # 14024)	14024-1385-R1	1
COVER,UPPER COWLING,LWR,EBONY (Ref # 14024A)	14024-1385-6C	1
COVER,UPPER COWLING,LWR,F.RED (Ref # 14024B)	14024-1385-6L	1
COVER,INNER COWLING,RH (Ref # 14024C)	14024-1392	1
COVER,TRIM END (Ref # 14024D)	14025-1756	2
WINDSHIELD (Ref # 39154)	39154-1067	1
TRIM,WINDSHIELD (Ref # 53044)	53044-1120	1
COWLING,INNER,LH (Ref # 55028)	55028-1145	1
COWLING,INNER,RH (Ref # 55028A)	55028-1146	1
COWLING,UPP,F.RED (Ref # 55028B)	55028-5309-B1	1
COWLING,UPP,P.A.WHITE (Ref # 55028C)	55028-5310-R1	1
COWLING,UPP,EBONY (Ref # 55028D)	55028-5311-H8	1
MIRROR-ASSY,LH (Ref # 56001)	56001-1250	1
MIRROR-ASSY,RH (Ref # 56001A)	56001-1251	1
SCREW,5X16,BLACK (Ref # 92009)	92009-1301	6
SCREW,TAPPING,5X15 (Ref # 92009A)	92009-1479	6
SCREW,5X12 (Ref # 92009B)	92009-1490	2
NUT,CAP,8MM,BLACK (Ref # 92015)	92015-1174	1
NUT,5MM,COWLING (Ref # 92015A)	92015-1343	6
NUT,5MM (Ref # 92015B)	92015-1638	4
WASHER,NYLON,5.3X11.5X1.5 (Ref # 92022)	92022-1521	14
DAMPER,MIRROR (Ref # 92075)	92075-1492	2
DAMPER,MIRROR (Ref # 92075A)	92075-1745	2
SCREW-CSK-CROS,6X30 (Ref # 221)	221C0630	4