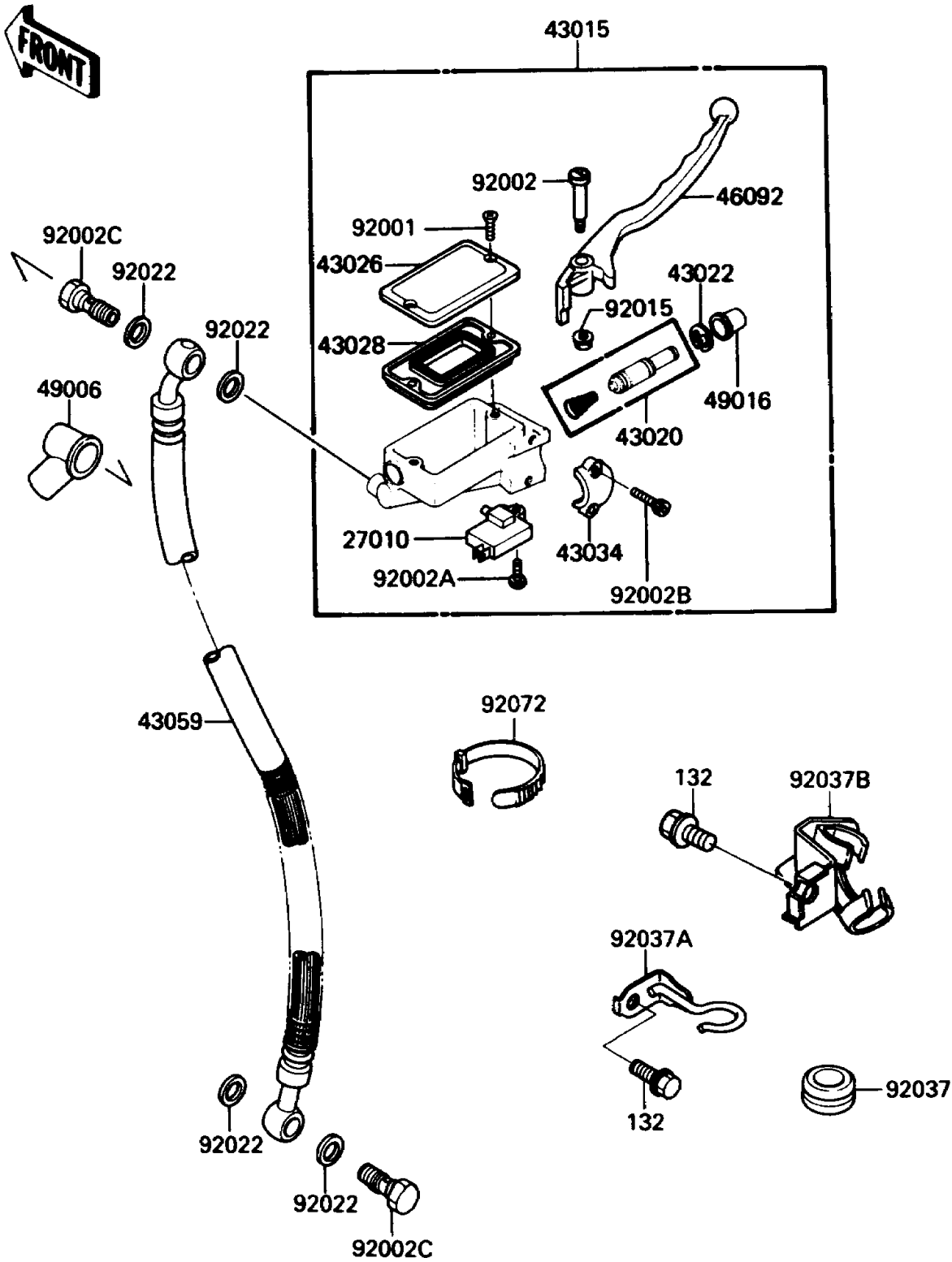


1988 EX500 PARTS DIAGRAM

Front Master Cylinder

F2291-0163



1988 EX500 PARTS LIST

Front Master Cylinder

| ITEM NAME | PART NUMBER | QUANTITY |
|--|-------------|----------|
| SWITCH,BRAKE (Ref # 27010) | 27010-1170 | 1 |
| CYLINDER-ASSY-MASTER,FR (Ref # 43015) | 43015-1330 | 1 |
| PISTON-COMP-BRAKE (Ref # 43020) | 43020-1031 | 1 |
| STOPPER-BRAKE,PISTON (Ref # 43022) | 43022-1010 | 1 |
| CAP-BRAKE,FR (Ref # 43026) | 43026-1055 | 1 |
| DIAPHRAGM,MASTER CYLINDER (Ref # 43028) | 43028-1058 | 1 |
| HOLDER-BRAKE,MASTER CYLINDER (Ref # 43034) | 43034-1053 | 1 |
| HOSE-BRAKE,FR (Ref # 43059) | 43059-1407 | 1 |
| LEVER-GRIP,FRONT BRAKE (Ref # 46092) | 46092-1117 | 1 |
| BOOT,DUST (Ref # 49006) | 49006-1040 | 1 |
| COVER-SEAL,MASTER CYLINDER (Ref # 49016) | 49016-1044 | 1 |
| SCREW,5MM (Ref # 92001) | 92001-1727 | 2 |
| BOLT,LEVER SET (Ref # 92002) | 92002-1322 | 1 |
| BOLT,SCREW,4X12 (Ref # 92002A) | 92002-1323 | 1 |
| BOLT,SOCKET,6X20 (Ref # 92002B) | 92002-1324 | 2 |
| BOLT,OIL,L=23 (Ref # 92002C) | 92002-1907 | 2 |
| NUT,FLANGED,6MM (Ref # 92015) | 92015-1233 | 1 |
| WASHER,10.5X15X1.5 (Ref # 92022) | 43067-001 | 4 |
| GROMMET,HOSE CLAMP (Ref # 92037) | 43064-007 | 1 |
| CLAMP,BRAKE HOSE,RH (Ref # 92037A) | 92037-1217 | 1 |
| CLAMP,HOSE (Ref # 92037B) | 92037-1852 | 1 |
| BAND,L=186 (Ref # 92072) | 92072-056 | 1 |
| BOLT-FLANGED-SMALL,6X10 (Ref # 132) | 132J0610 | 1 |