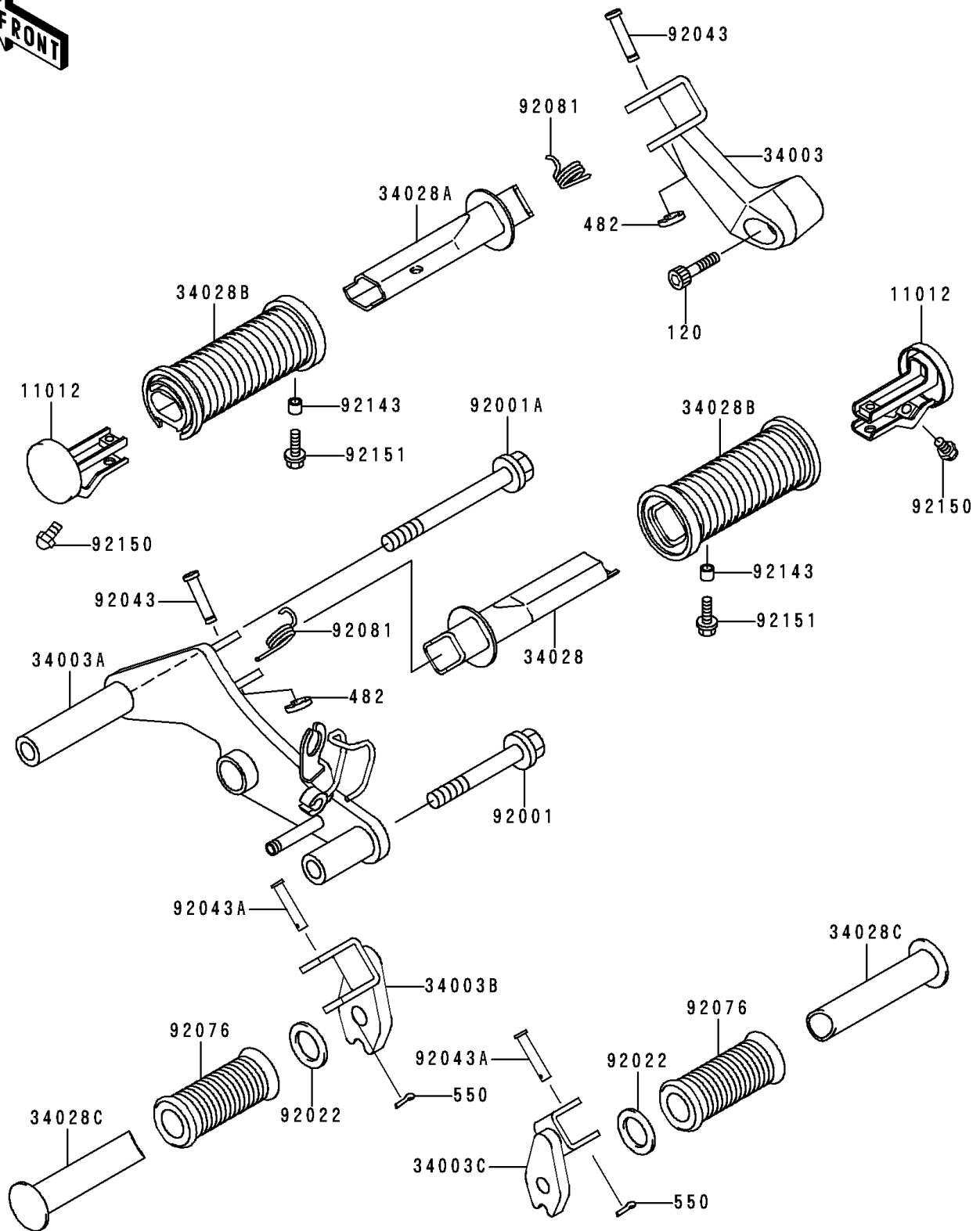


# 2000 Vulcan 500 LTD

## PARTS DIAGRAM

### Footrests

F2160



# 2000 Vulcan 500 LTD

## PARTS LIST

### Footrests

ITEM NAME	PART NUMBER	QUANTITY
BOLT-SOCKET,12X45 (Ref # 120)	120S1245	1
CIRCLIP-TYPE-E (Ref # 482)	482L7000	2
PIN-COTTER,2.0X15 (Ref # 550)	550D2015	2
CAP,FRONT STEP (Ref # 11012)	11012-1957	2
HOLDER-STEP,FR,LH (Ref # 34003)	34003-1437	1
HOLDER-STEP,FR,RH (Ref # 34003A)	34003-1438	1
HOLDER-STEP,RR,LH (Ref # 34003B)	34003-1439	1
HOLDER-STEP,RR,RH (Ref # 34003C)	34003-1440	1
STEP,FR,RH (Ref # 34028)	34028-1412	1
STEP,FR,LH (Ref # 34028A)	34028-1413	1
STEP,FR,RUBBER (Ref # 34028B)	34028-1414	2
STEP,RR (Ref # 34028C)	34028-1420	2
BOLT,FLANGED,10X70 (Ref # 92001)	92001-1618	1
BOLT,FLANGED,10X105,BLACK (Ref # 92001A)	92001-1751	1
WASHER,20X30X2.3 (Ref # 92022)	92022-1568	2
PIN,8X36.5 (Ref # 92043)	92043-1339	2
PIN,6X28 (Ref # 92043A)	92043-1464	2
DAMPER (Ref # 92076)	92076-020	2
SPRING,STEP (Ref # 92081)	92081-1133	2
COLLAR,5.6X8X7 (Ref # 92143)	92143-1336	2
BOLT,BANK SENSOR (Ref # 92150)	92150-1114	2
BOLT,SOCKET,5X20 (Ref # 92151)	92151-1096	2