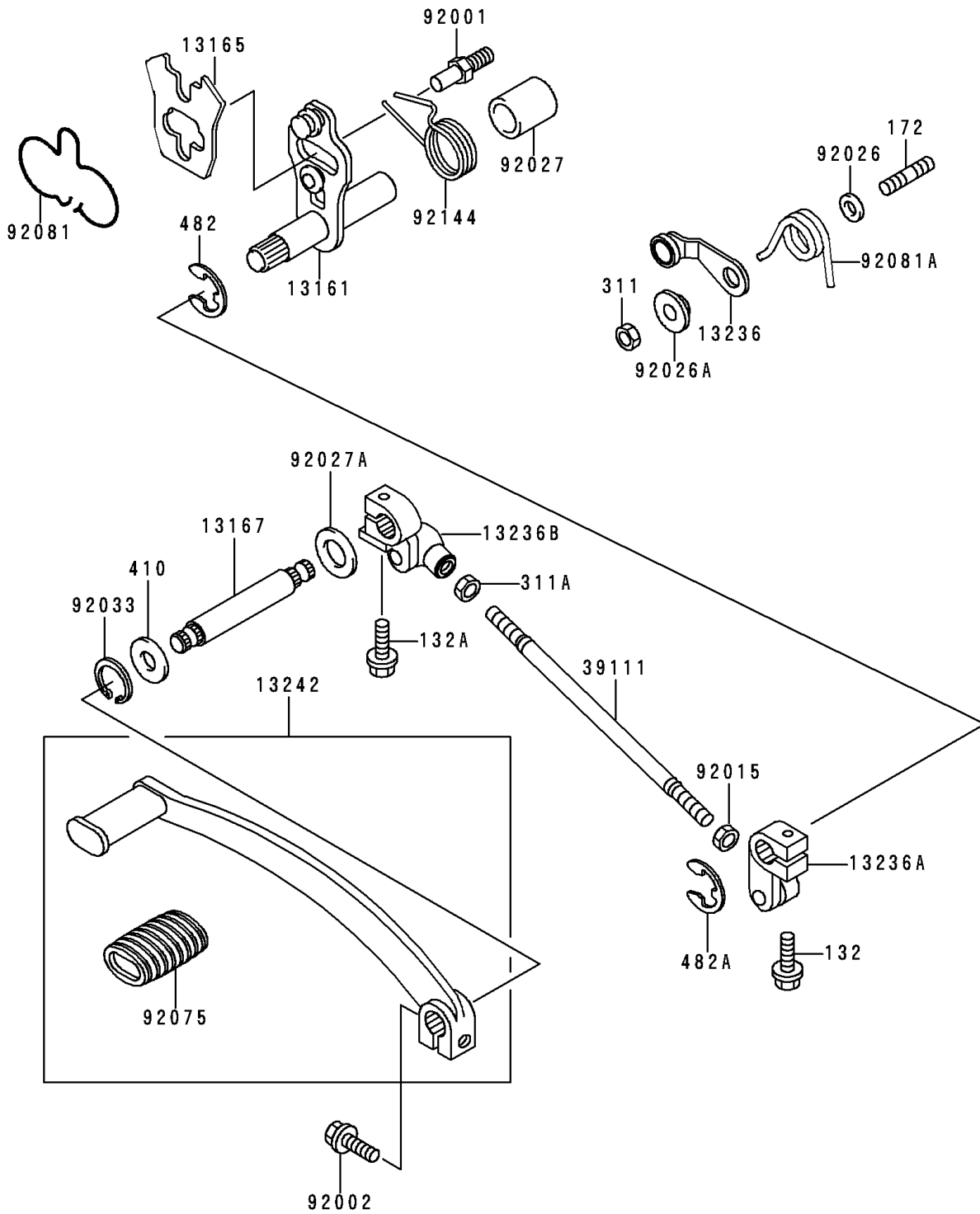


1994 Vulcan 500 PARTS DIAGRAM

Gear Change Mechanism

E1370



1994 Vulcan 500 PARTS LIST

Gear Change Mechanism

| ITEM NAME | PART NUMBER | QUANTITY |
|---|-------------|----------|
| BOLT-FLANGED-SMALL (Ref # 132) | 132J0620 | 1 |
| BOLT-FLANGED-SMALL (Ref # 132A) | 132J0625 | 1 |
| BOLT-STUD,6X14 (Ref # 172) | 172G0614 | 1 |
| NUT-HEX,6MM (Ref # 311) | 311G0600 | 1 |
| NUT-HEX (Ref # 311A) | 311J0600 | 1 |
| WASHER-PLAIN-SMALL,12MM,BLACK (Ref # 410) | 410F1200 | 1 |
| CIRCLIP-TYPE-E,12MM (Ref # 482) | 482J0200 | 1 |
| CIRCLIP-TYPE-E (Ref # 482A) | 482L7000 | 1 |
| LEVER-COMP-CHANGE SHAFT (Ref # 13161) | 13161-1117 | 1 |
| PAWL,CHANGE LEVER (Ref # 13165) | 13165-1034 | 1 |
| SHAFT-CHANGE (Ref # 13167) | 13167-1059 | 1 |
| LEVER-COMP,GEAR POSITION (Ref # 13236) | 13236-1103 | 1 |
| LEVER-COMP,CHANGE (Ref # 13236A) | 13236-1123 | 1 |
| LEVER-COMP,CHANGE (Ref # 13236B) | 13236-1124 | 1 |
| LEVER-ASSY-CHANGE,PEDAL (Ref # 13242) | 13242-1201 | 1 |
| ROD-TIE (Ref # 39111) | 39111-1071 | 1 |
| BOLT,RETURN SPRING (Ref # 92001) | 92001-1455 | 1 |
| BOLT,6X20 (Ref # 92002) | 92002-1237 | 1 |
| NUT (Ref # 92015) | 92015-1178 | 1 |
| SPACER,6.3X12X1.0 (Ref # 92026) | 92026-094 | 1 |
| SPACER (Ref # 92026A) | 92026-1217 | 1 |
| COLLAR,13X18.3X21.5 (Ref # 92027) | 92027-1440 | 1 |
| COLLAR,13.2X22X5.5 (Ref # 92027A) | 92027-1855 | 1 |
| RING-SNAP,11MM (Ref # 92033) | 92033-1189 | 1 |
| DAMPER,CHANGE PEDAL (Ref # 92075) | 92075-1585 | 1 |
| SPRING,CHANGE LEVER (Ref # 92081) | 92081-1785 | 1 |
| SPRING,POSITION LEVER (Ref # 92081A) | 92081-1786 | 1 |
| SPRING,CHANGE PEDAL RETURN (Ref # 92144) | 92144-1644 | 1 |