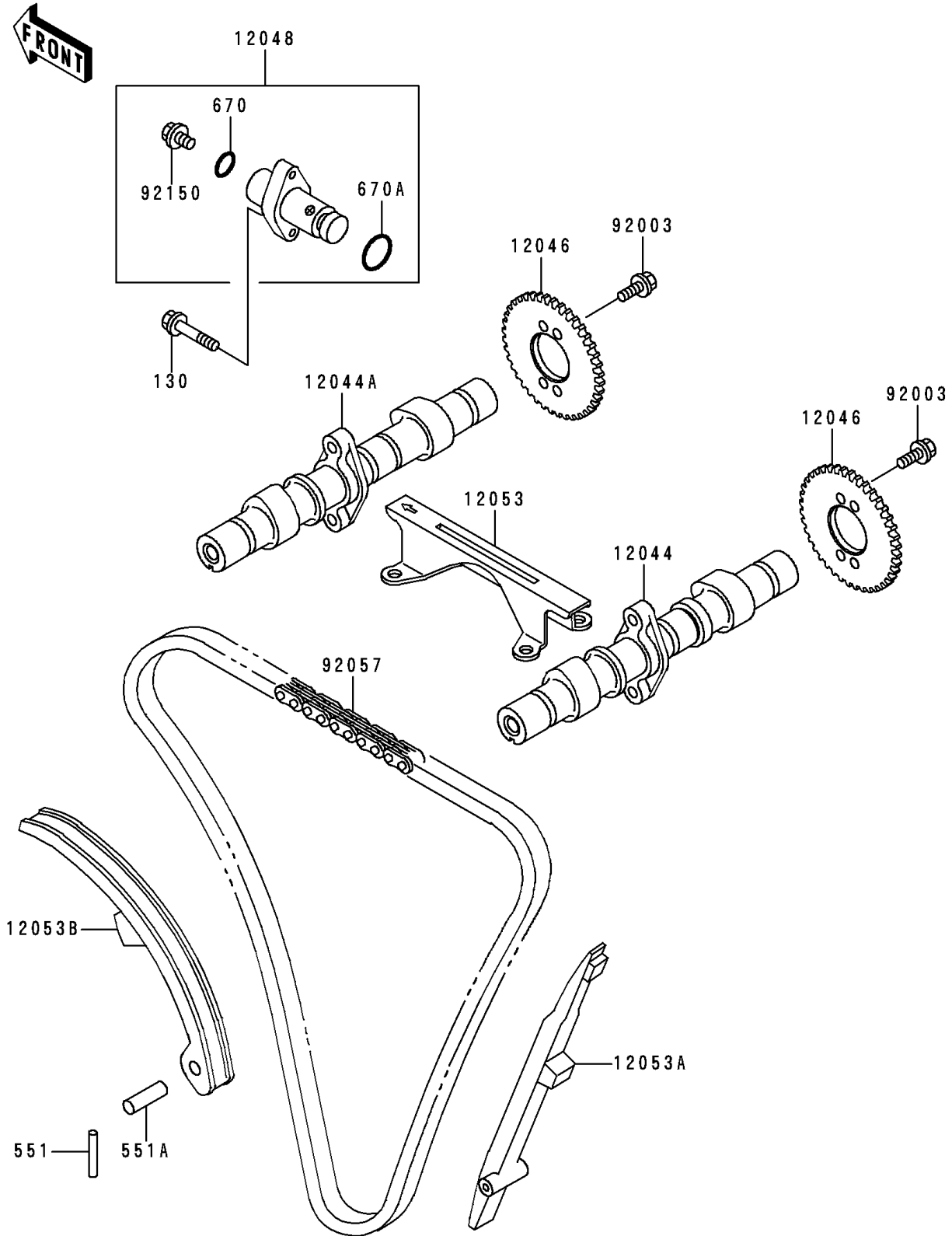


1994 Vulcan 500 PARTS DIAGRAM

Camshafts/Tensioner

E1230



1994 Vulcan 500 PARTS LIST

Camshafts/Tensioner

| ITEM NAME | PART NUMBER | QUANTITY |
|---------------------------------------|-------------|----------|
| BOLT-FLANGED (Ref # 130) | 130Y0625 | 1 |
| PIN-DOWEL (Ref # 551) | 551A0432 | 1 |
| PIN-DOWEL,8X40 (Ref # 551A) | 551A0840 | 1 |
| O RING (Ref # 670) | 670D2010 | 1 |
| O RING,21MM (Ref # 670A) | 670D2021 | 1 |
| CAMSHAFT-VALVE,INTAKE (Ref # 12044) | 12044-1215 | 1 |
| CAMSHAFT-VALVE,EXHAUST (Ref # 12044A) | 12044-1216 | 1 |
| SPROCKET,CAMSHAFT,46T (Ref # 12046) | 12046-1075 | 1 |
| TENSIONER-ASSY (Ref # 12048) | 12048-1103 | 1 |
| GUIDE-CHAIN,UPP (Ref # 12053) | 12053-1145 | 1 |
| GUIDE-CHAIN,RR (Ref # 12053A) | 12053-1150 | 1 |
| GUIDE-CHAIN,FR (Ref # 12053B) | 12053-1151 | 1 |
| BOLT,FLANGED,6X11 (Ref # 92003) | 92003-208 | 1 |
| CHAIN,CAM,79RH2015-148L (Ref # 92057) | 92057-1188 | 1 |
| BOLT,TENSIONER (Ref # 92150) | 92150-1381 | 1 |