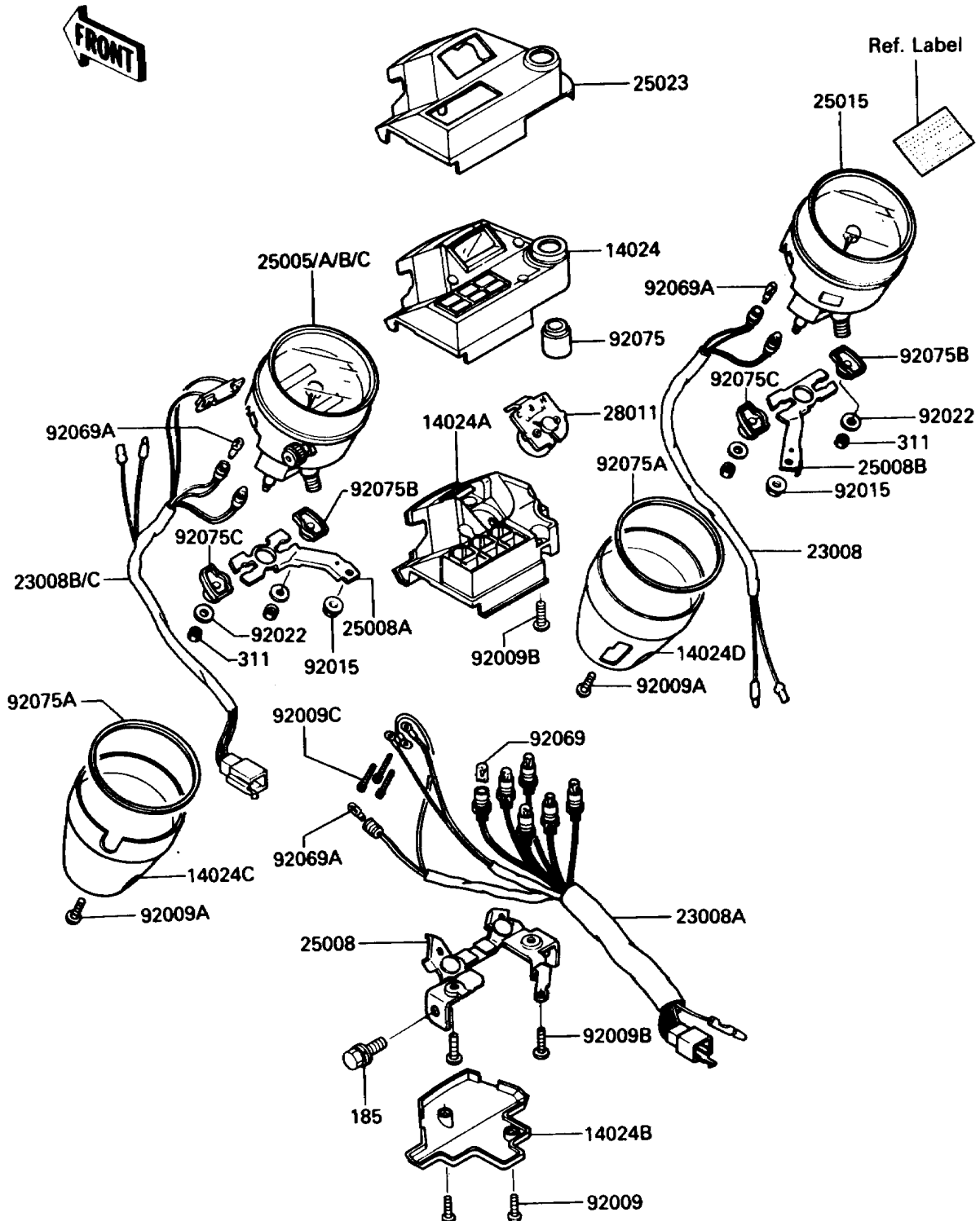


## 1987 454 LTD PARTS DIAGRAM

Meter(s)

F2530



## 1987 454 LTD PARTS LIST

Meter(s)

ITEM NAME	PART NUMBER	QUANTITY
COVER,PILOT BOX,UPP (Ref # 14024)	14025-1742	1
COVER,PILOT BOX,INNER (Ref # 14024A)	14025-1743	1
COVER,PILOT BOX,LWR (Ref # 14024B)	14025-1744	1
COVER,SPEEDOMETER (Ref # 14024C)	14025-1745	1
COVER,TACHOMETER (Ref # 14024D)	14025-1748	1
SOCKET-ASSY,TACHOMETER (Ref # 23008)	23008-1259	1
SOCKET-ASSY,PILOT BOX (Ref # 23008A)	23008-1261	1
SOCKET-ASSY,SPEEDOMETER (Ref # 23008B)	23008-1274	1
SPEEDOMETER,MPH (Ref # 25005)	25005-1361	1
SPEEDOMETER,KPH (Ref # 25005A)	25005-1362	1
BRACKET-METER,PILOT BOX (Ref # 25008)	25008-1115	1
BRACKET-METER,SPEEDOMETER (Ref # 25008A)	25008-1116	1
BRACKET-METER,TACHOMETER (Ref # 25008B)	25008-1118	1
TACHOMETER,(X1000R/MIN) (Ref # 25015)	25015-1236	1
COVER-METER CASE,PILOT BOX (Ref # 25023)	25023-1125	1
METER,TEMP (Ref # 28011)	28011-1072	1
SCREW,TAPPING,4X14 (Ref # 92009)	92009-1034	1
SCREW,TAPPING,4X16 (Ref # 92009A)	92009-1063	1
SCREW,TAPPING,4X16 (Ref # 92009B)	92009-1163	1
SCREW,3X22 (Ref # 92009C)	92009-1293	1
NUT,FLANGED,6MM (Ref # 92015)	92015-1193	1
WASHER,5.2X16X1.2 (Ref # 92022)	92022-263	1
BULB,12V 3.4W (Ref # 92069)	92069-1007	1
BULB,12V3W T-7 (Ref # 92069A)	92069-1020	1
DAMPER,TRIP METER (Ref # 92075)	92075-1286	1
DAMPER,METER (Ref # 92075A)	92075-1712	1
DAMPER,METER (Ref # 92075B)	92075-1713	1
DAMPER,METER (Ref # 92075C)	92075-1714	1
BOLT-UPSET-WSP-SMALL (Ref # 185)	185C0816	1

## 1987 454 LTD PARTS LIST

Meter(s)

ITEM NAME	PART NUMBER	QUANTITY
NUT-HEX (Ref # 311)	311B0500	1