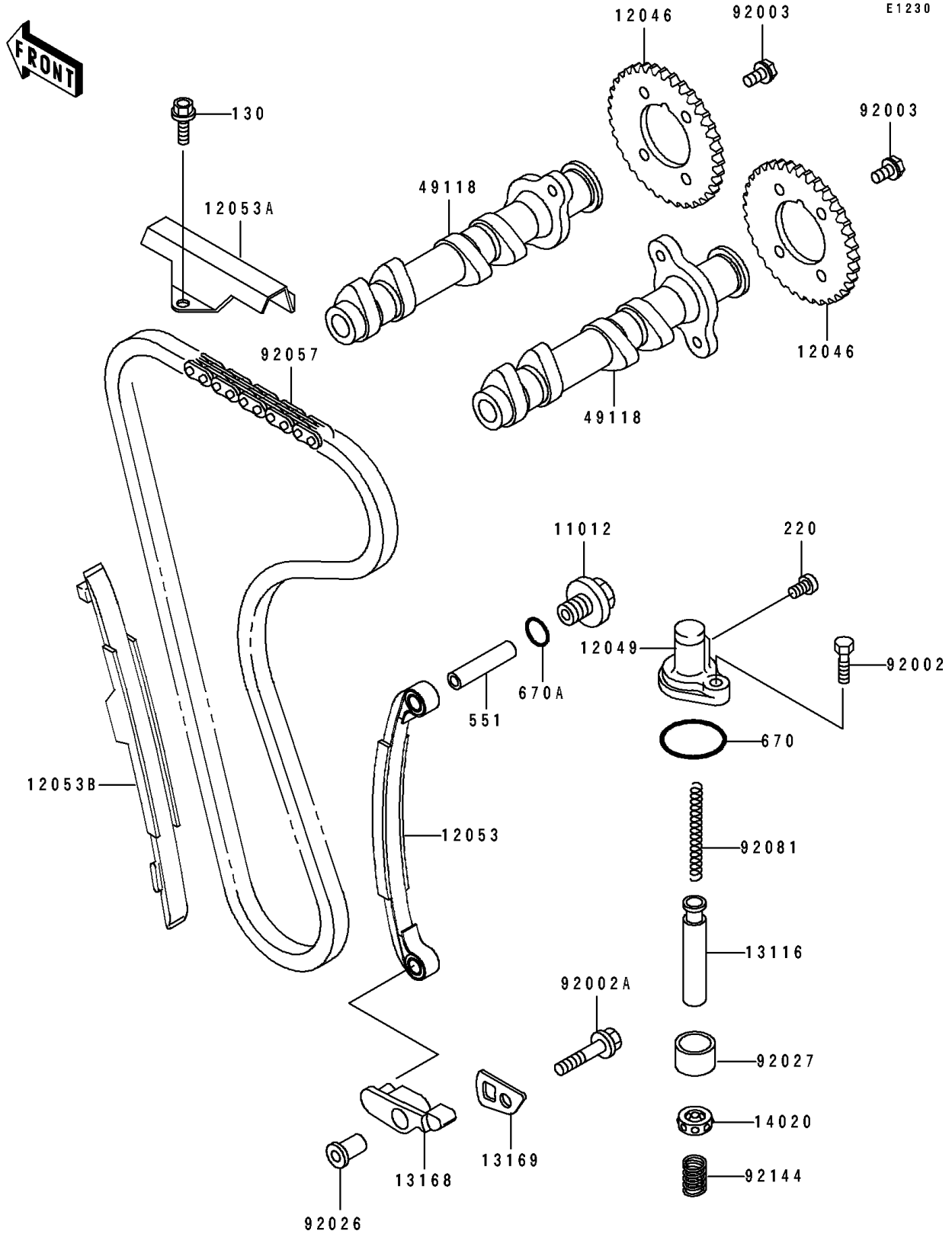


# 1991 Eliminator 250 PARTS DIAGRAM

Camshaft(s)/Tensioner



# 1991 Eliminator 250 PARTS LIST

## Camshaft(s)/Tensioner

| ITEM NAME                             | PART NUMBER | QUANTITY |
|---------------------------------------|-------------|----------|
| CAP,BOLT (Ref # 11012)                | 11012-1677  | 1        |
| SPROCKET,CAMSHAFT,38T (Ref # 12046)   | 12046-1085  | 2        |
| TENSIONER (Ref # 12049)               | 12049-1053  | 1        |
| GUIDE-CHAIN,RR (Ref # 12053)          | 12053-1191  | 1        |
| GUIDE-CHAIN,UPP (Ref # 12053A)        | 12053-1192  | 1        |
| GUIDE-CHAIN,FR (Ref # 12053B)         | 12053-1205  | 1        |
| ROD-PUSH,TENSIONER (Ref # 13116)      | 13116-1138  | 1        |
| LEVER,TENSIONER (Ref # 13168)         | 13168-1313  | 1        |
| PLATE,CHAIN GUIDE (Ref # 13169)       | 13169-1661  | 1        |
| RETAINER,TENSIONER (Ref # 14020)      | 14020-1054  | 1        |
| CAMSHAFT-COMP (Ref # 49118)           | 49118-1054  | 2        |
| BOLT,6X25 (Ref # 92002)               | 92002-1344  | 2        |
| BOLT,8X35 (Ref # 92002A)              | 92002-1824  | 1        |
| BOLT,FLANGED,6X11 (Ref # 92003)       | 92003-208   | 4        |
| SPACER (Ref # 92026)                  | 92026-1266  | 1        |
| COLLAR,TENSIONER (Ref # 92027)        | 92027-1240  | 1        |
| CHAIN,CAM,82RH2010-124L (Ref # 92057) | 92057-1210  | 1        |
| SPRING,TENSIONER (Ref # 92081)        | 92081-1984  | 1        |
| SPRING,TENSIONER (Ref # 92144)        | 92144-1274  | 1        |
| BOLT-FLANGED,6X14 (Ref # 130)         | 130P0614    | 1        |
| SCREW-PAN-CROS (Ref # 220)            | 220C0508    | 1        |
| PIN-DOWEL (Ref # 551)                 | 551A0835    | 1        |
| O RING,21MM (Ref # 670)               | 670B2021    | 1        |
| O RING,14MM (Ref # 670A)              | 670D2014    | 1        |