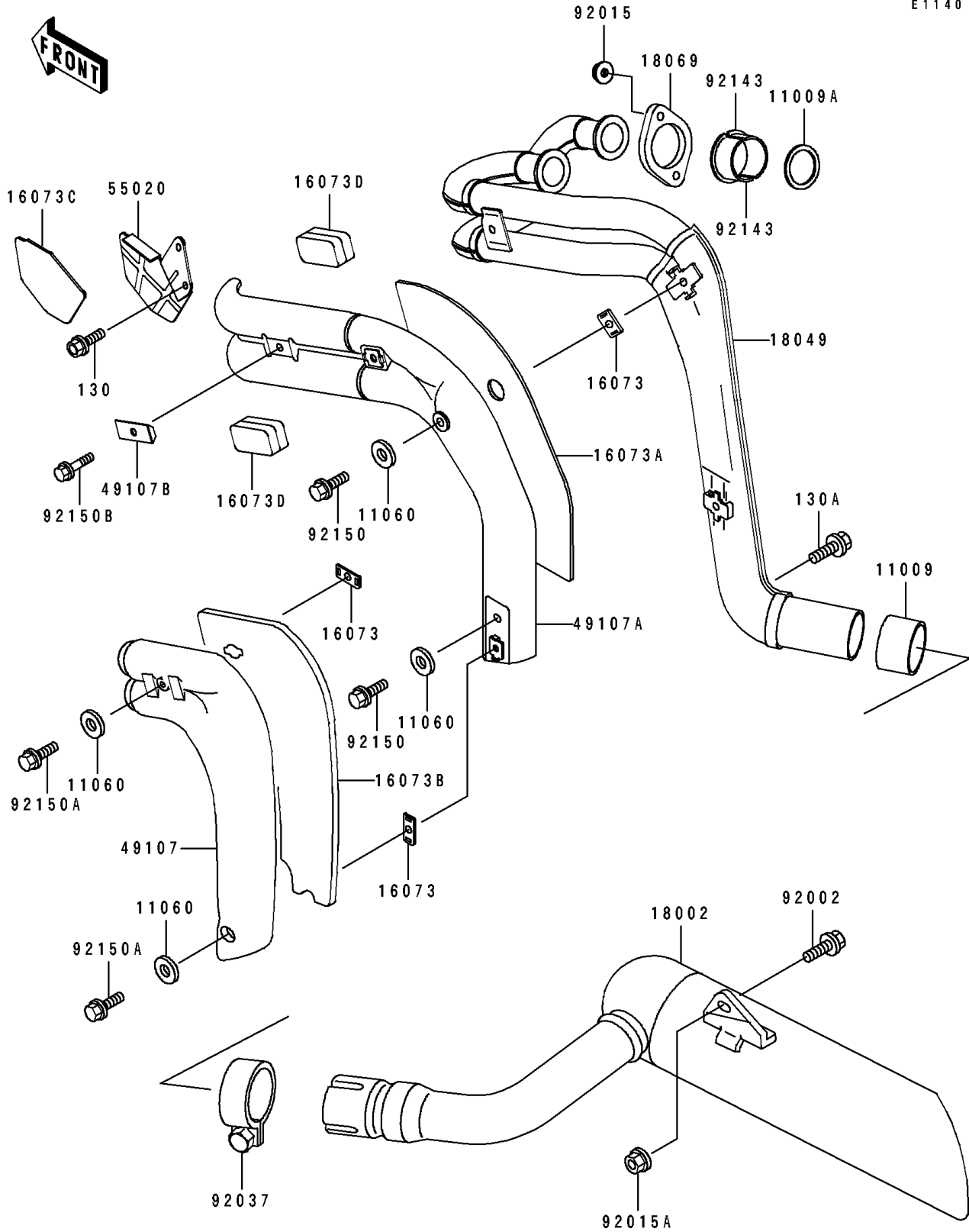


## 1992 Eliminator 250 PARTS DIAGRAM

Muffler(s)

E1140



## 1992 Eliminator 250 PARTS LIST

Muffler(s)

| ITEM NAME                                    | PART NUMBER | QUANTITY |
|--|-------------|----------|
| GASKET,EXHAUST PIPE CONNECTING (Ref # 11009) | 11009-1666  | 1        |
| GASKET,EXHAUST PIPE HOLDER (Ref # 11009A)    | 11009-1866  | 1        |
| GASKET,6.2X11.5X1.5 (Ref # 11060)            | 11060-1109  | 1        |
| INSULATOR (Ref # 16073)                      | 16073-1065  | 1        |
| INSULATOR,RR,INNER (Ref # 16073A)            | 16073-1067  | 1        |
| INSULATOR,OUTER (Ref # 16073B)               | 16073-1068  | 1        |
| INSULATOR,GUARD (Ref # 16073C)               | 16073-1071  | 1        |
| INSULATOR,EXHAUST COVER (Ref # 16073D)       | 16073-1072  | 1        |
| BODY-COMP-MUFFLER (Ref # 18002)              | 18002-1798  | 1        |
| PIPE-EXHAUST (Ref # 18049)                   | 18049-1421  | 1        |
| HOLDER-EXHAUST PIPE (Ref # 18069)            | 18069-1076  | 1        |
| COVER-EXHAUST PIPE (Ref # 49107)             | 49107-1075  | 1        |
| COVER-EXHAUST PIPE (Ref # 49107A)            | 49107-1076  | 1        |
| COVER-EXHAUST PIPE (Ref # 49107B)            | 49107-1078  | 1        |
| GUARD,HEAT (Ref # 55020)                     | 55020-1319  | 1        |
| BOLT,FLANGED,10X25 (Ref # 92002)             | 92002-1828  | 1        |
| NUT,6MM (Ref # 92015)                        | 92015-1365  | 1        |
| NUT,FLANGED,10MM (Ref # 92015A)              | 92015-1387  | 1        |
| CLAMP,52MM (Ref # 92037)                     | 92037-1633  | 1        |
| COLLAR,EXHAUST PIPE (Ref # 92143)            | 92143-1006  | 1        |
| BOLT,6X14 (Ref # 92150)                      | 92150-1055  | 1        |
| BOLT,6X16 (Ref # 92150A)                     | 92150-1059  | 1        |
| BOLT,6X22 (Ref # 92150B)                     | 92150-1099  | 1        |
| BOLT-FLANGED (Ref # 130)                     | 130J0508    | 1        |
| BOLT-FLANGED (Ref # 130A)                    | 130J0812    | 1        |