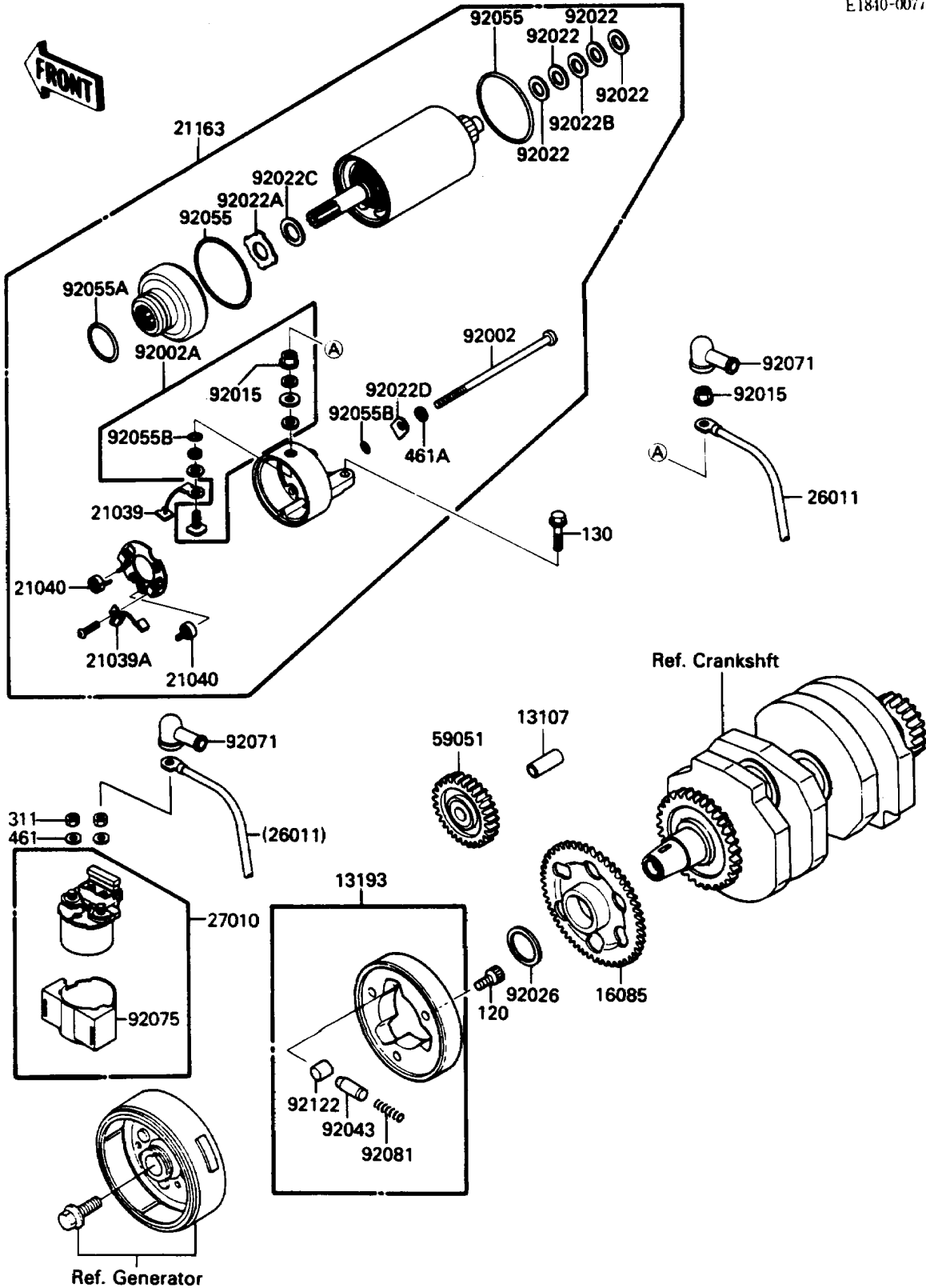


1988 Eliminator PARTS DIAGRAM

Starter Motor

E1810-0077



1988 Eliminator PARTS LIST

Starter Motor

ITEM NAME	PART NUMBER	QUANTITY
SHAFT,7.8X12X26.5 (Ref # 13107)	13107-1176	1
CLUTCH-ASSY-ONEWAY (Ref # 13193)	13193-1002	1
GEAR,ONEWAY CLUTCH,65T (Ref # 16085)	16085-1166	1
BRUSH,CARBON(+) (Ref # 21039)	21039-1001	1
BRUSH,CARBON(-) (Ref # 21039A)	21039-1056	1
SPRING-BRUSH (Ref # 21040)	21040-1053	2
STARTER-ELECTRIC (Ref # 21163)	21163-1136	1
WIRE-LEAD,STARTER (Ref # 26011)	26011-1411	1
SWITCH,MAGNETIC (Ref # 27010)	27010-1213	1
GEAR-SPUR,IDLE (Ref # 59051)	59051-1154	1
BOLT,STARTER (Ref # 92002)	92002-1818	2
BOLT,TERMINAL (Ref # 92002A)	92002-1819	1
NUT,STARTER MOTOR (Ref # 92015)	92015-1476	2
WASHER,9.1X18X0.2 (Ref # 92022)	21025-011	4
WASHER,THRUST SUPPORT (Ref # 92022A)	92022-1130	1
WASHER,9.1X18X0.8 (Ref # 92022B)	92022-1132	1
WASHER,22X12.2X0.5 (Ref # 92022C)	92022-1714	1
WASHER,LOCK (Ref # 92022D)	92022-1825	2
SPACER,25X40X1 (Ref # 92026)	92026-1004	1
PIN (Ref # 92043)	92043-132	3
RING-O (Ref # 92055)	92055-1042	2
RING-O (Ref # 92055A)	92055-1303	1
RING-O,4.5X2.0 (Ref # 92055B)	92055-1370	3
GROMMET,STARTER TERMINAL (Ref # 92071)	21017-017	2
DAMPER,MAGNETIC SWITCH (Ref # 92075)	92075-1863	1
SPRING,COIL (Ref # 92081)	92081-159	3
ROLLER (Ref # 92122)	92122-006	3
BOLT-SOCKET,8X14 (Ref # 120)	120P0814	3
BOLT-FLANGED (Ref # 130)	130J0620	2

1988 Eliminator PARTS LIST

Starter Motor

ITEM NAME	PART NUMBER	QUANTITY
NUT-HEX,6MM (Ref # 311)	311B0600	2
WASHER-SPRING,6MM (Ref # 461)	461F0600	2
WASHER-SPRING,5MM,BLACK (Ref # 461A)	461K0500	2