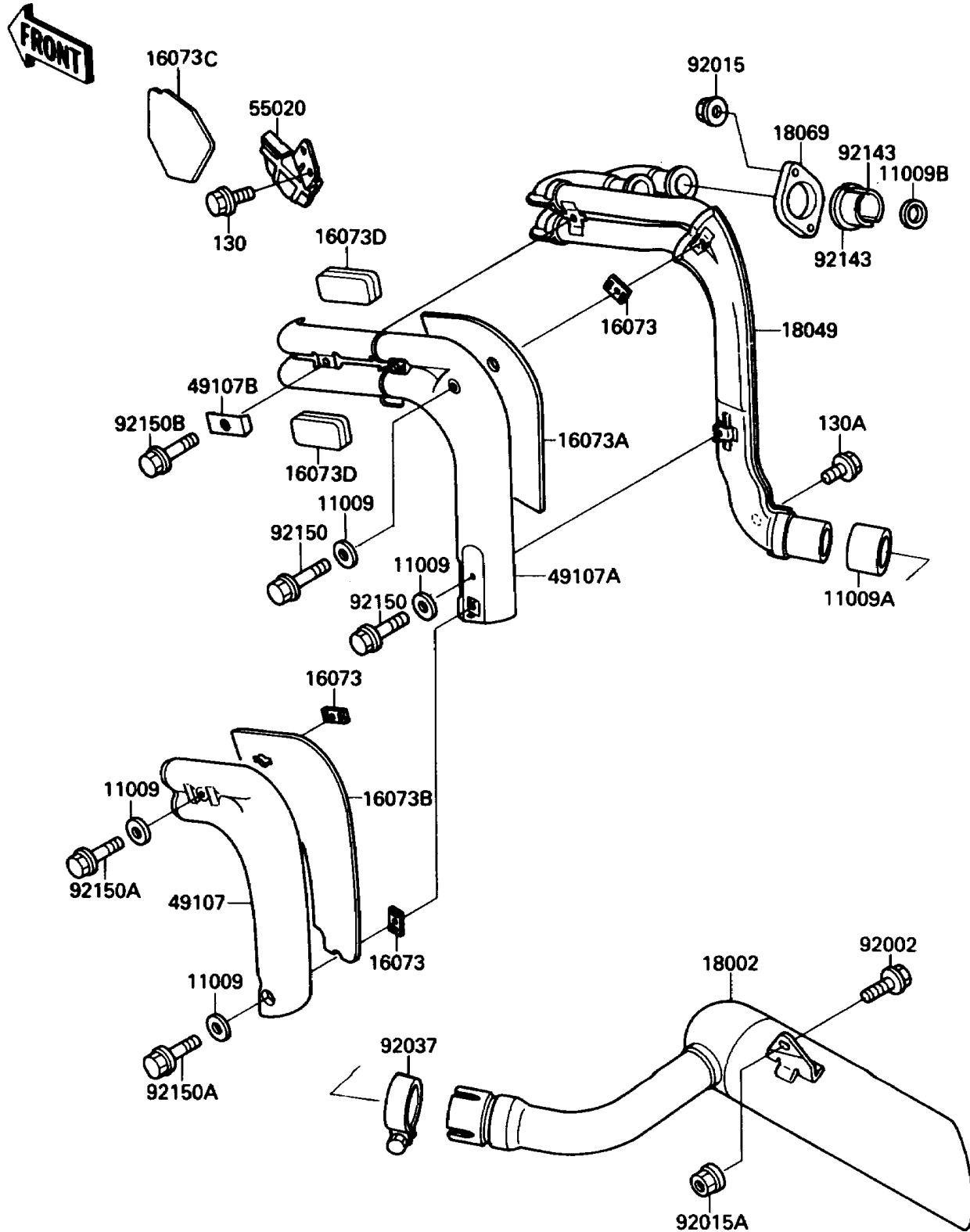


# 1988 Eliminator PARTS DIAGRAM

Muffler(s)

E1140-0277



# 1988 Eliminator PARTS LIST

Muffler(s)

ITEM NAME	PART NUMBER	QUANTITY
GASKET,6.2X11.5X1.5 (Ref # 11009)	11009-1451	4
GASKET,EXHAUST PIPE CONNECTING (Ref # 11009A)	11009-1480	1
GASKET,EXHAUST PIPE HOLDER (Ref # 11009B)	18067-004	2
INSULATOR (Ref # 16073)	16073-1065	3
INSULATOR,RR,INNER (Ref # 16073A)	16073-1067	1
INSULATOR,OUTER (Ref # 16073B)	16073-1068	1
INSULATOR,GUARD (Ref # 16073C)	16073-1071	1
INSULATOR,EXHAUST COVER (Ref # 16073D)	16073-1072	2
BODY-COMP-MUFFLER (Ref # 18002)	18002-1798	1
PIPE-EXHAUST (Ref # 18049)	18049-1421	1
HOLDER-EXHAUST PIPE (Ref # 18069)	18069-1076	2
COVER-EXHAUST PIPE (Ref # 49107)	49107-1075	1
COVER-EXHAUST PIPE (Ref # 49107A)	49107-1076	1
COVER-EXHAUST PIPE (Ref # 49107B)	49107-1078	1
GUARD (Ref # 55020)	55020-1319	1
BOLT,FLANGED,10X25 (Ref # 92002)	92002-1828	1
NUT,6MM (Ref # 92015)	92015-1365	4
NUT,FLANGED,10MM (Ref # 92015A)	92015-1387	1
CLAMP,52MM (Ref # 92037)	92037-1633	1
COLLAR,EXHAUST PIPE (Ref # 92143)	92143-1006	4
BOLT,6X14 (Ref # 92150)	92150-1055	2
BOLT,6X16 (Ref # 92150A)	92150-1059	2
BOLT,6X22 (Ref # 92150B)	92150-1099	1
BOLT-FLANGED (Ref # 130)	130J0508	2
BOLT-FLANGED (Ref # 130A)	130J0812	1