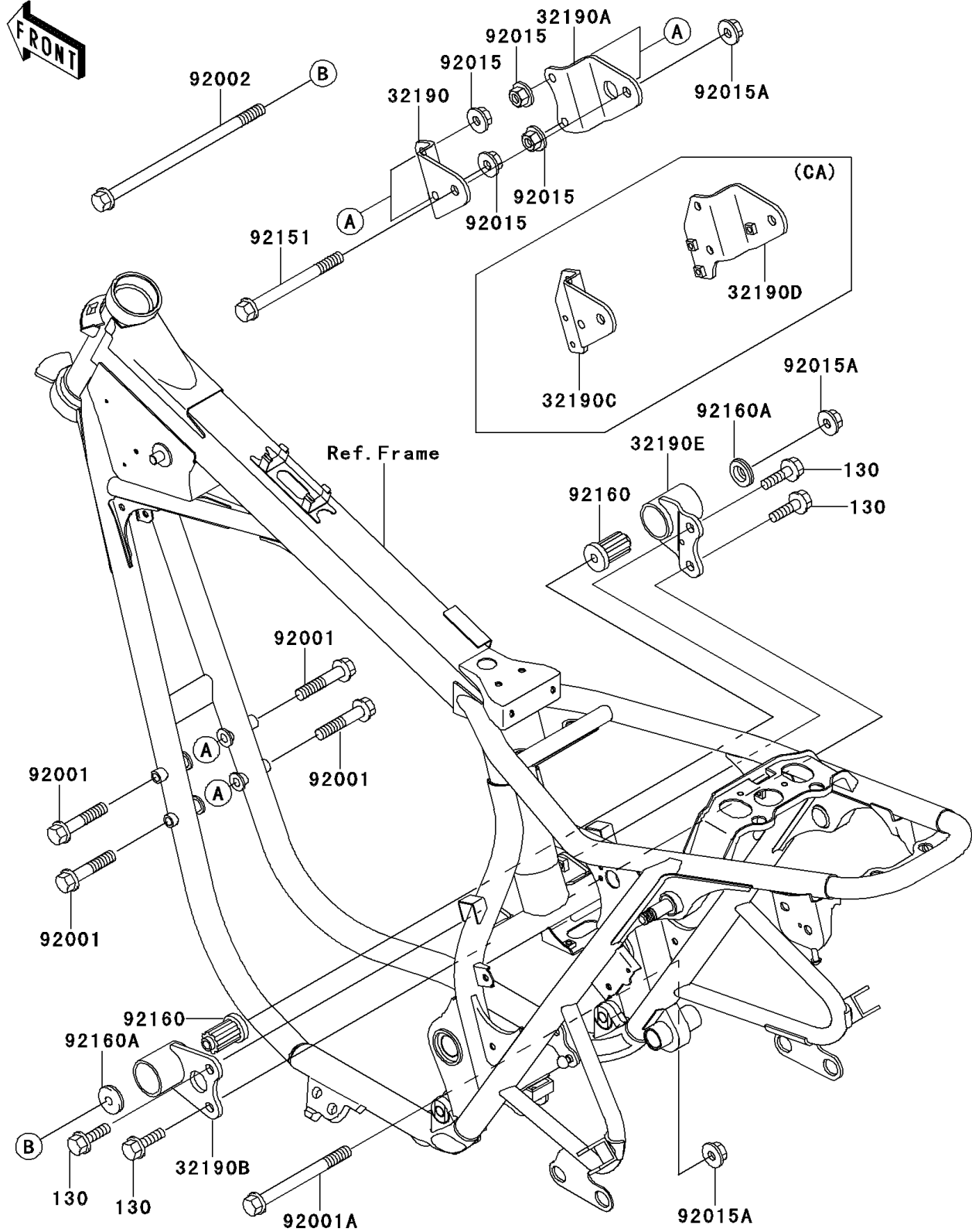


# 2000 W650 PARTS DIAGRAM

Engine Mount

F2132



## 2000 W650 PARTS LIST

### Engine Mount

| ITEM NAME                                | PART NUMBER | QUANTITY |
|--|-------------|----------|
| BOLT-FLANGED,8X16,BLACK (Ref # 130)      | 130J0816    | 4        |
| BRACKET-ENGINE,RR,UPP,LH (Ref # 32190B)  | 32190-1173  | 1        |
| BRACKET-ENGINE,RR,UPP,RH (Ref # 32190E)  | 32190-1226  | 1        |
| BOLT,FLANGED,8X60,BLACK (Ref # 92001)    | 92001-1615  | 4        |
| BOLT,FLANGED,10X160,BLACK (Ref # 92001A) | 92001-1953  | 1        |
| BOLT,FLANGED,10X230 (Ref # 92002)        | 92002-1531  | 1        |
| NUT,FLANGED,8MM,BLACK (Ref # 92015)      | 92015-1183  | 4        |
| NUT,LOCK,10MM (Ref # 92015A)             | 92015-1522  | 3        |
| BOLT,FLANGED,10X135 (Ref # 92151)        | 92151-1783  | 1        |
| DAMPER,ENGINE MOUNT (Ref # 92160)        | 92160-1483  | 2        |
| DAMPER (Ref # 92160A)                    | 92160-1984  | 2        |
| BRACKET-ENGINE,FR,LH (Ref # 32190)       | 32190-1171  | 1        |
| BRACKET-ENGINE,FR,RH (Ref # 32190A)      | 32190-1172  | 1        |
| BRACKET-ENGINE,FR,LH (Ref # 32190C)      | 32190-1195  | 1        |
| BRACKET-ENGINE,FR,RH (Ref # 32190D)      | 32190-1196  | 1        |