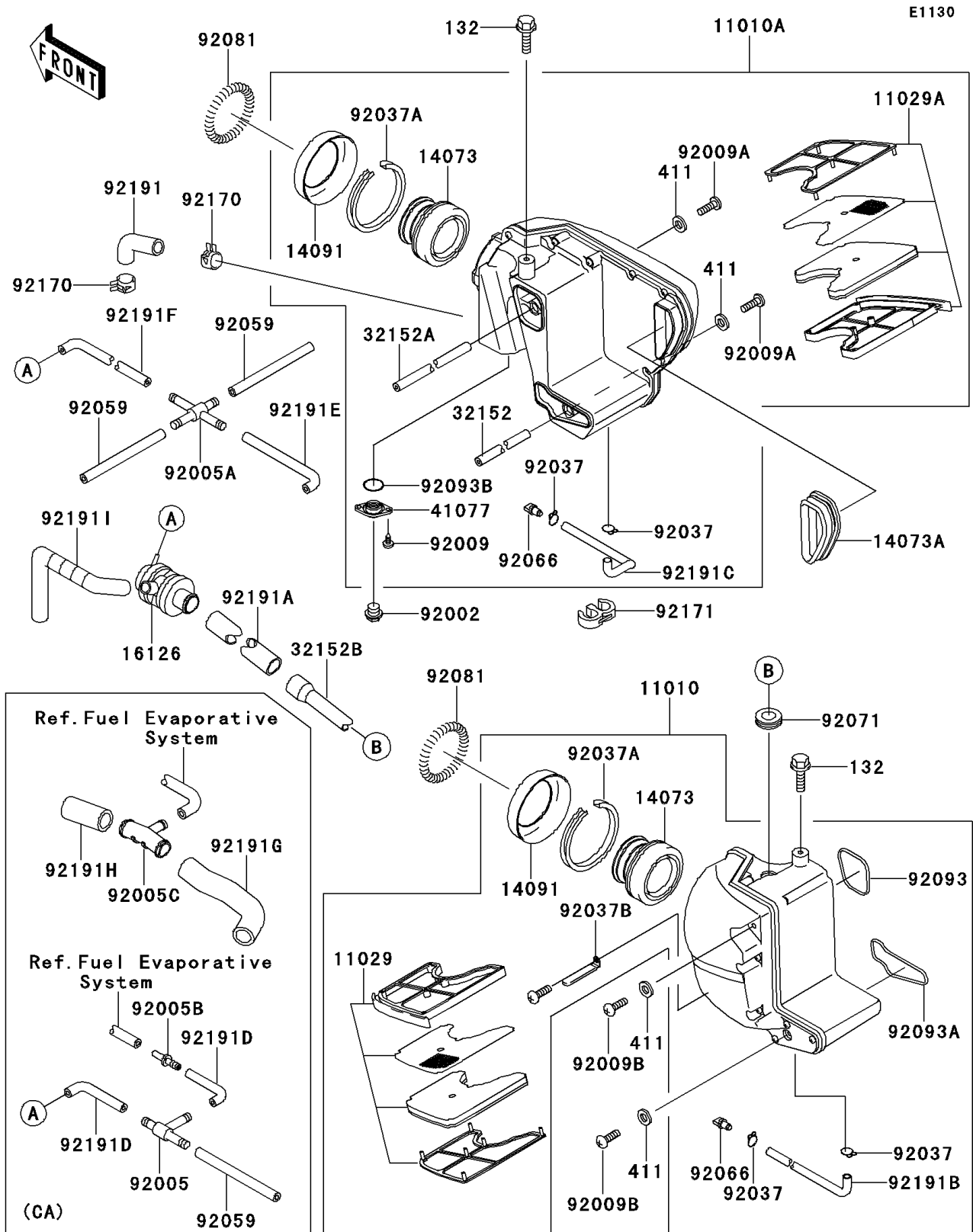


2000 W650 PARTS DIAGRAM

Air Cleaner



2000 W650 PARTS LIST

Air Cleaner

ITEM NAME	PART NUMBER	QUANTITY
FILTER-ASSY-AIR,LH (Ref # 11010)	11010-1664	1
FILTER-ASSY-AIR,RH (Ref # 11010A)	11010-1731	1
ELEMENT-ASSY-AIR FILTER,LH (Ref # 11029)	11029-1012	1
ELEMENT-ASSY-AIR FILTER,RH (Ref # 11029A)	11029-1013	1
DUCT,CARBURETOR (Ref # 14073)	14073-1413	2
DUCT (Ref # 14073A)	14073-1744	1
COVER,AIR FILTER (Ref # 14091)	14091-1088	2
VALVE,AIR SWITCH (Ref # 16126)	16126-1376	1
PIPE,L=220 (Ref # 32152)	32152-1895	1
PIPE,L=305 (Ref # 32152A)	32152-1931	1
PIPE,AIR SUCTION VALVE (Ref # 32152B)	32152-1946	1
ADAPTER (Ref # 41077)	41077-1101	1
BOLT,16X10 (Ref # 92002)	92002-1448	1
FITTING,TUBE,X-TYPE (Ref # 92005A)	92005-1051	1
SCREW,TAPPING,5X12 (Ref # 92009)	92009-1051	2
SCREW,TAPPING,5X20 (Ref # 92009A)	92009-1399	2
SCREW,TAPPING,5X20 (Ref # 92009B)	92009-1906	2
CLAMP,TUBE (Ref # 92037)	92037-147	4
CLAMP,69MM (Ref # 92037A)	92037-1631	2
CLAMP (Ref # 92037B)	92037-1679	2
PLUG,DRAIN (Ref # 92066)	92066-1211	2
GROMMET,AIR SUCTION VALVE (Ref # 92071)	92071-1249	1
SPRING,COIL,BLACK (Ref # 92081)	92081-1457	2
SEAL (Ref # 92093)	92093-1496	1
SEAL (Ref # 92093A)	92093-1497	1
SEAL (Ref # 92093B)	92093-1505	1
CLAMP (Ref # 92170)	92170-1060	2
CLAMP (Ref # 92171)	92171-1432	1
TUBE,BREATHER (Ref # 92191)	92191-1379	1

2000 W650 PARTS LIST

Air Cleaner

ITEM NAME	PART NUMBER	QUANTITY
TUBE,DRAIN (Ref # 92191B)	92191-1391	1
BOLT-FLANGED-SMALL (Ref # 132)	132Y0608	2
WASHER-PLAIN,5MM,BLACK (Ref # 411)	411F0500	4
TUBE,DRAIN (Ref # 92191C)	92191-1392	1
TUBE,FITTING-TAP (Ref # 92191E)	92191-1422	1
TUBE,HEAD-AIR SWITCH (Ref # 92191I)	92191-1671	1
FITTING,TUBE,T-TYPE (Ref # 92005)	92005-1017	1
FITTING (Ref # 92005B)	92005-1206	1
FITTING (Ref # 92005C)	92005-1373	1
TUBE,4X9X80 (Ref # 92059)	92059-1365	2
TUBE,4X9X80 (Ref # 92059)	92059-1365	3
TUBE,AIR SWITCH CLEANER (Ref # 92191A)	92191-1389	1
TUBE,FITTING-CARBURETOR (Ref # 92191D)	92191-1421	2
TUBE,AIR SWITCH-FITTING (Ref # 92191F)	92191-1423	1
TUBE (Ref # 92191G)	92191-1505	1
TUBE (Ref # 92191H)	92191-1506	1