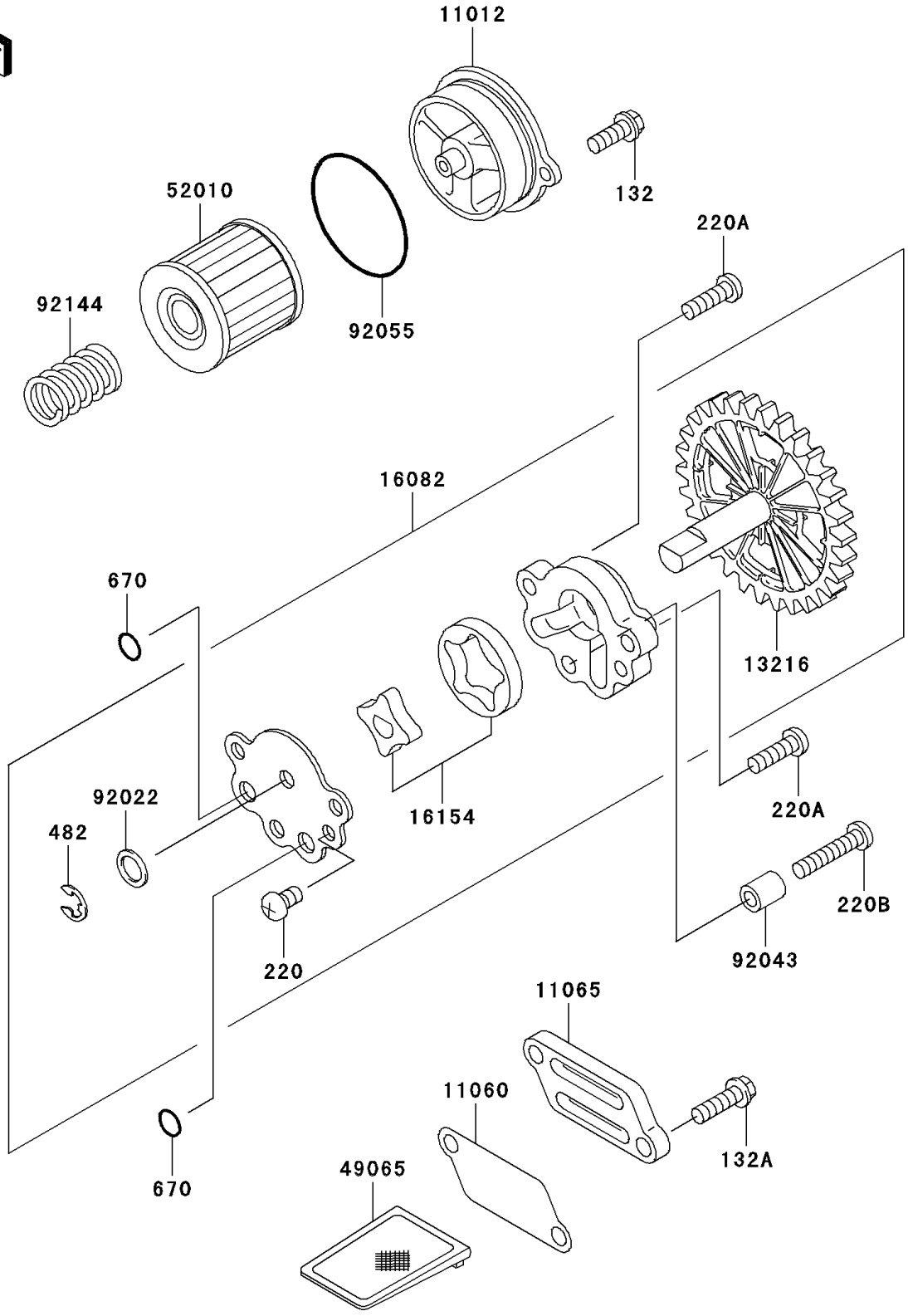


2004 Eliminator 125 PARTS DIAGRAM

Oil Pump/Oil Filter

E1710



2004 Eliminator 125 PARTS LIST

Oil Pump/Oil Filter

| ITEM NAME | PART NUMBER | QUANTITY |
|-------------------------------------|-------------|----------|
| BOLT-FLANGED-SMALL,6X16 (Ref # 132) | 132V0616 | 2 |
| BOLT-FLANGED-SMALL (Ref # 132A) | 132V0620 | 2 |
| SCREW-PAN-CROS,6X10 (Ref # 220) | 220B0610 | 1 |
| SCREW-PAN-CROS,6X20 (Ref # 220A) | 220B0620 | 2 |
| SCREW-PAN-CROS,6X30 (Ref # 220B) | 220B0630 | 1 |
| CIRCLIP-TYPE-E,6MM (Ref # 482) | 482J6000 | 1 |
| O RING,10MM (Ref # 670) | 670B1510 | 2 |
| CAP (Ref # 11012) | 11012-1971 | 1 |
| GASKET,OIL FILTER (Ref # 11060) | 11060-1768 | 1 |
| CAP,OIL FILTER (Ref # 11065) | 11065-1138 | 1 |
| GEAR-COMP,OIL PUMP (Ref # 13216) | 13216-1167 | 1 |
| PUMP-ASSY-OIL (Ref # 16082) | 16082-1153 | 1 |
| ROTOR-PUMP (Ref # 16154) | 16154-1077 | 1 |
| FILTER-OIL (Ref # 49065) | 49065-1075 | 1 |
| ELEMENT-OIL FILTER (Ref # 52010) | 52010-1053 | 1 |
| WASHER,10.2X14.5X1.0 (Ref # 92022) | 92022-1181 | 1 |
| PIN,6.2X8X14 (Ref # 92043) | 92043-1263 | 1 |
| RING-O,52.6X2.4 (Ref # 92055) | 92055-1577 | 1 |
| SPRING (Ref # 92144) | 92144-1761 | 1 |