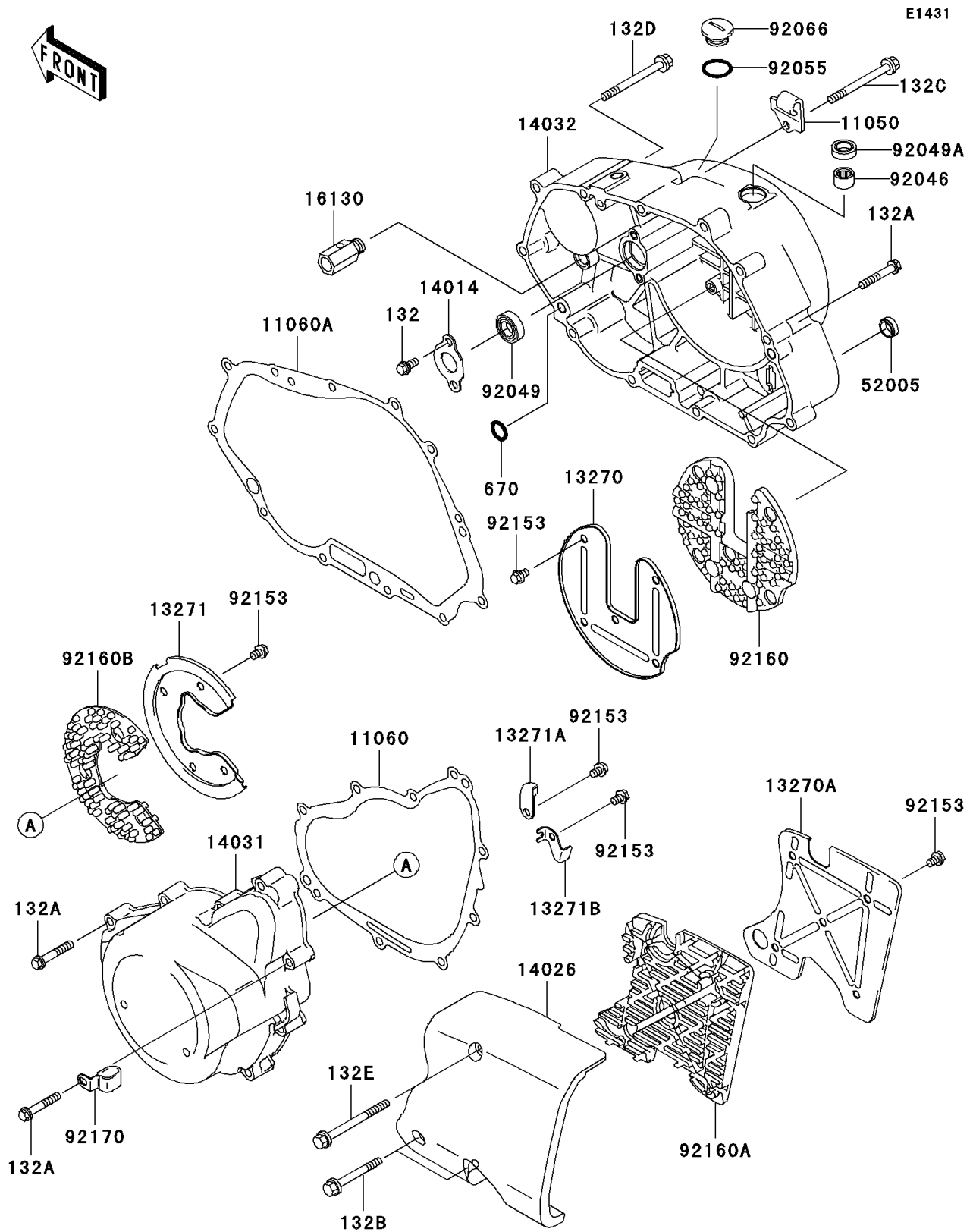


## 2003 Eliminator 125 (Canada Only) PARTS DIAGRAM

Engine Cover(s)



## 2003 Eliminator 125 (Canada Only) PARTS LIST

Engine Cover(s)

ITEM NAME	PART NUMBER	QUANTITY
BOLT-FLANGED-SMALL (Ref # 132)	132G0612	1
BOLT-FLANGED-SMALL (Ref # 132A)	132V0635	1
BOLT-FLANGED-SMALL (Ref # 132B)	132V0650	1
BOLT-FLANGED-SMALL (Ref # 132C)	132V0655	1
BOLT-FLANGED-SMALL (Ref # 132D)	132V0665	1
BOLT-FLANGED-SMALL (Ref # 132E)	132V0670	1
O RING,8MM (Ref # 670)	670B1508	1
BRACKET,CABLE (Ref # 11050)	11050-1777	1
GASKET,GENERATOR COVER (Ref # 11060)	11060-1751	1
GASKET,CLUTCH COVER (Ref # 11060A)	11060-1752	1
PLATE,CLUTCH COVER (Ref # 13270)	13270-1665	1
PLATE,CHAIN COVER (Ref # 13270A)	13270-1855	1
PLATE (Ref # 13271)	13271-1056	1
PLATE (Ref # 13271A)	13271-1057	1
PLATE (Ref # 13271B)	13271-1344	1
PLATE-POSITION (Ref # 14014)	14014-1129	1
COVER-CHAIN (Ref # 14026)	14026-1265	1
COVER-GENERATOR (Ref # 14031)	14031-1368	1
COVER-CLUTCH (Ref # 14032)	14032-1497	1
VALVE-ASSY-RELIEF (Ref # 16130)	16130-1001	1
GAUGE,OIL LEVEL (Ref # 52005)	52005-1009	1
BEARING-NEEDLE,HK1210 (Ref # 92046)	92046-1010	1
SEAL-OIL (Ref # 92049)	92049-1191	1
SEAL-OIL,TB12205.5 (Ref # 92049A)	92049-1271	1
RING-O (Ref # 92055)	92055-1146	1
PLUG (Ref # 92066)	92066-1482	1
BOLT,6X8 (Ref # 92153)	92153-0528	1
DAMPER,CLUTCH COVER (Ref # 92160)	92160-1762	1
DAMPER,CHAIN COVER (Ref # 92160A)	92160-1855	1

## 2003 Eliminator 125 (Canada Only) PARTS LIST

Engine Cover(s)

ITEM NAME	PART NUMBER	QUANTITY
DAMPER (Ref # 92160B)	92160-1923	1
CLAMP (Ref # 92170)	92170-1833	1