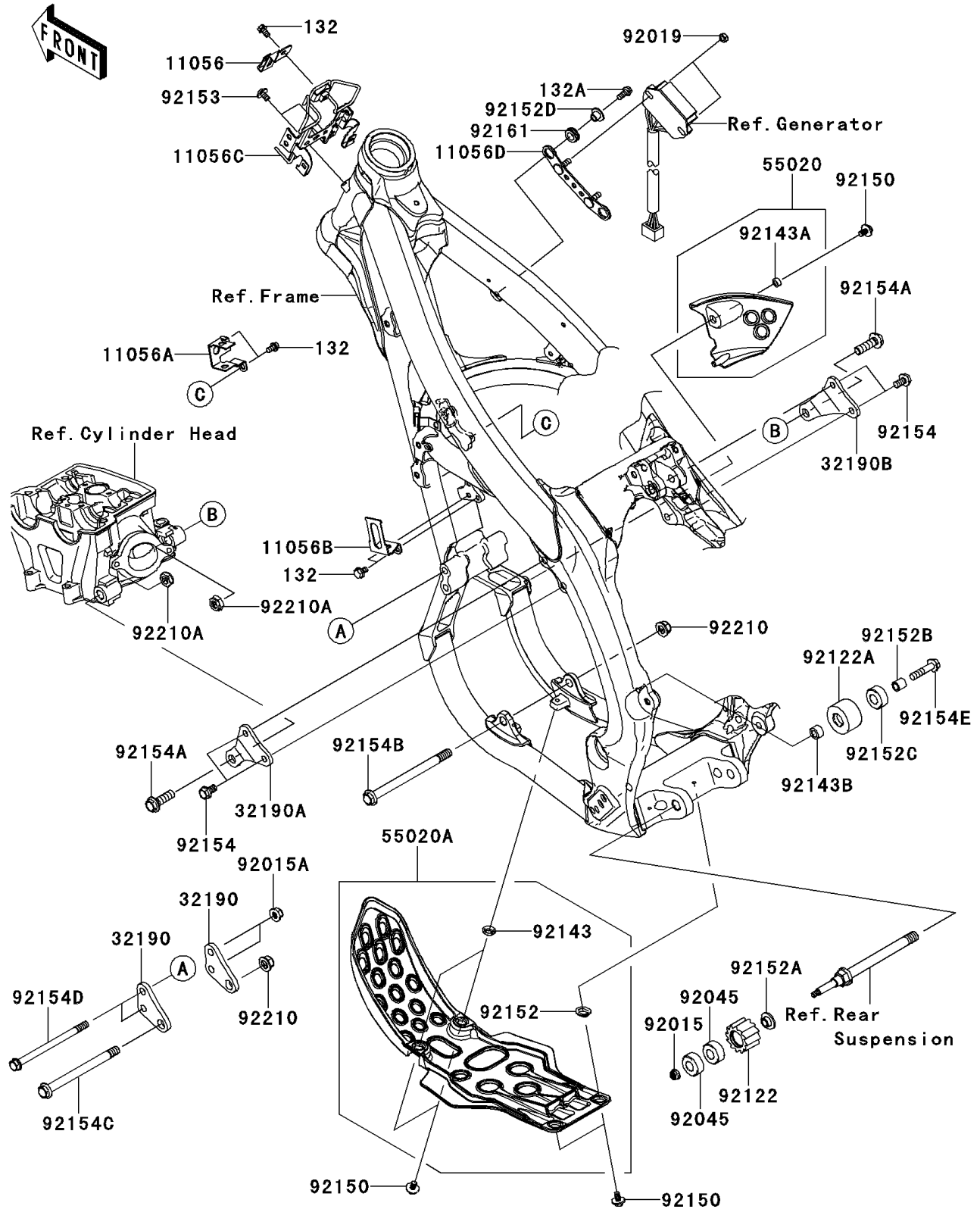


2012 KX™450F PARTS DIAGRAM

Frame Fittings

F2131



2012 KX™450F PARTS LIST

Frame Fittings

| ITEM NAME | PART NUMBER | QUANTITY |
|--|---------------|----------|
| BOLT-FLANGED-SMALL,6X10 (Ref # 132) | 132BA0610 | 1 |
| BOLT-FLANGED-SMALL,6X14 (Ref # 132A) | 132BA0614 | 1 |
| BRACKET,DIAG CONNECTOR (Ref # 11056) | 11056-0070 | 1 |
| BRACKET,BANK SENSOR (Ref # 11056A) | 11056-0071 | 1 |
| BRACKET,CONDENSER (Ref # 11056B) | 11056-0072 | 1 |
| BRACKET,ECU (Ref # 11056C) | 11056-0623 | 1 |
| BRACKET,REGULATOR (Ref # 11056D) | 11056-0624 | 1 |
| BRACKET-ENGINE,FR (Ref # 32190) | 32190-0386 | 1 |
| BRACKET-ENGINE,UPP,LH (Ref # 32190A) | 32190-0463 | 1 |
| BRACKET-ENGINE,UPP,RH (Ref # 32190B) | 32190-0464 | 1 |
| GUARD,ENGINE,SIDE,RH,EBONY (Ref # 55020) | 55020-0434-6C | 1 |
| GUARD,ENGINE,LWR,EBONY (Ref # 55020A) | 55020-0440-6C | 1 |
| NUT,LOCK,FLANGED,6MM (Ref # 92015) | 92015-1339 | 1 |
| NUT,8MM (Ref # 92015A) | 92015-1432 | 1 |
| NUT,LOCK,6MM (Ref # 92019) | 92019-008 | 1 |
| BEARING-BALL,608LLU/2A (Ref # 92045) | 92045-0060 | 1 |
| ROLLER,CHAIN GUIDE (Ref # 92122) | 92122-0016 | 1 |
| ROLLER,CHAIN (Ref # 92122A) | 92122-0042 | 1 |
| COLLAR (Ref # 92143) | 92143-1196 | 1 |
| COLLAR (Ref # 92143A) | 92143-1307 | 1 |
| COLLAR,8.5X15X9 (Ref # 92143B) | 92143-1642 | 1 |
| BOLT,6X12 (Ref # 92150) | 92150-1435 | 1 |
| COLLAR (Ref # 92152) | 92152-0052 | 1 |
| COLLAR (Ref # 92152A) | 92152-0459 | 1 |
| COLLAR,8.5X12.5X12.5 (Ref # 92152B) | 92152-0944 | 1 |
| COLLAR,12.7X27.2X12 (Ref # 92152C) | 92152-0945 | 1 |
| COLLAR (Ref # 92152D) | 92152-1449 | 1 |
| BOLT,SOCKET,6X10 (Ref # 92153) | 92153-1628 | 1 |
| BOLT,FLANGED,8X14 (Ref # 92154) | 92154-0380 | 1 |

2012 KX™450F PARTS LIST

Frame Fittings

| ITEM NAME | PART NUMBER | QUANTITY |
|-------------------------------------|-------------|----------|
| BOLT,FLANGED,10X32 (Ref # 92154A) | 92154-0381 | 1 |
| BOLT,FLANGED,10X137 (Ref # 92154B) | 92154-0522 | 1 |
| BOLT,FLANGED,10X124 (Ref # 92154C) | 92154-0523 | 1 |
| BOLT,FLANGED,8X122 (Ref # 92154D) | 92154-0524 | 1 |
| BOLT,FLANGED,8X35 (Ref # 92154E) | 92154-0913 | 1 |
| DAMPER (Ref # 92161) | 92161-0266 | 1 |
| NUT,LOCK,FLANGED,10MM (Ref # 92210) | 92210-1080 | 1 |
| NUT,LOCK,10MM (Ref # 92210A) | 92210-1184 | 1 |