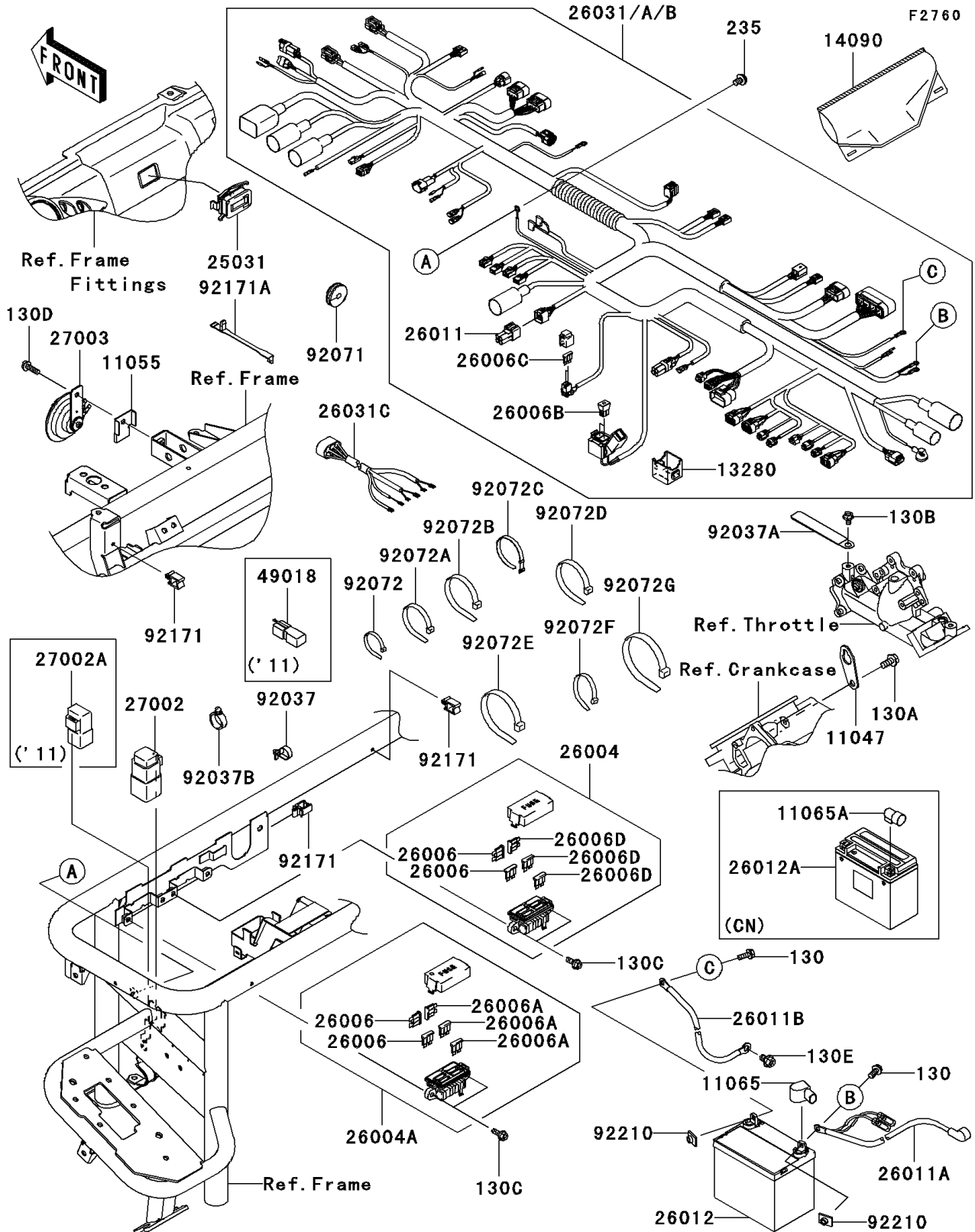


2009 MULE™ 4010 Trans4x4® PARTS DIAGRAM

Chassis Electrical Equipment



2009 MULE™ 4010 Trans4x4® PARTS LIST

Chassis Electrical Equipment

ITEM NAME	PART NUMBER	QUANTITY
BRACKET,F.BLACK (Ref # 11047)	11047-2056-9H	1
BRACKET,HORN (Ref # 11055)	11055-0167	1
HOLDER (Ref # 13280)	13280-7508	1
COVER,COUPLER (Ref # 14090)	14090-1611	1
METER-ASSY,HOUR (Ref # 25031)	25031-7506	1
FUSE-ASSY (Ref # 26004)	26004-0018	1
FUSE-ASSY (Ref # 26004A)	26004-0019	1
FUSE,30A (Ref # 26006)	26006-0004	1
FUSE,10A (Ref # 26006A)	26006-0005	1
FUSE,40A (Ref # 26006B)	26006-0014	1
FUSE,7.5A (Ref # 26006C)	26006-0015	1
FUSE,20A-Y (Ref # 26006D)	26006-1051	1
WIRE-LEAD (Ref # 26011)	26011-0037	1
WIRE-LEAD,BATTERY(+) (Ref # 26011A)	26011-0225	1
WIRE-LEAD,BATTERY(-) (Ref # 26011B)	26011-7516	1
HARNESS,MAIN (Ref # 26031)	26031-0641	1
HARNESS (Ref # 26031C)	26031-2080	1
RELAY-ASSY (Ref # 27002)	27002-1068	1
HORN (Ref # 27003)	27003-1330	1
CLAMP,SPEED,L=58 (Ref # 92037)	92037-1163	1
CLAMP,HARNESS,L=100 (Ref # 92037A)	92037-1636	1
CLAMP,HOSE (Ref # 92037B)	92037-1827	1
GROMMET (Ref # 92071)	92071-1136	1
BAND,L=123 (Ref # 92072)	92072-030	1
BAND,L=149 (Ref # 92072A)	92072-031	1
BOLT-FLANGED,8X16 (Ref # 130A)	130BA0816	1
BOLT-FLANGED,6X10 (Ref # 130B)	130BB0610	1
BOLT-FLANGED,6X16 (Ref # 130C)	130BB0616	1
BOLT-FLANGED,6X20 (Ref # 130D)	130BB0620	1

2009 MULE™ 4010 Trans4x4® PARTS LIST

Chassis Electrical Equipment

ITEM NAME	PART NUMBER	QUANTITY
BOLT-FLANGED,8X12 (Ref # 130E)	130BB0812	1
SCREW-PAN-WP-CROS,6X10 (Ref # 235)	235AA0610	1
BAND,L=218 (Ref # 92072B)	92072-032	1
BAND,L=186 (Ref # 92072C)	92072-056	1
BAND,L=202 (Ref # 92072D)	92072-1195	1
BAND,L=250 (Ref # 92072E)	92072-1237	1
BAND,L=188 (Ref # 92072F)	92072-1239	1
BAND,L=368.3 (Ref # 92072G)	92072-3872	1
CLAMP (Ref # 92171)	92171-0290	1
CLAMP (Ref # 92171A)	92171-1365	1
CAP,BATTERY TERMINAL (Ref # 11065)	11065-0285	1
CAP,BATTERY(+) (Ref # 11065A)	11065-7502	1
BATTERY,12V 14AH (Ref # 26012)	26012-0107	1
BATTERY,YTX20L-BS,12V 18AH (Ref # 26012A)	26012-3728	1
BOLT-FLANGED,6X16 (Ref # 130)	130BA0616	1
NUT,PLATE,6MM (Ref # 92210)	92210-1352	1