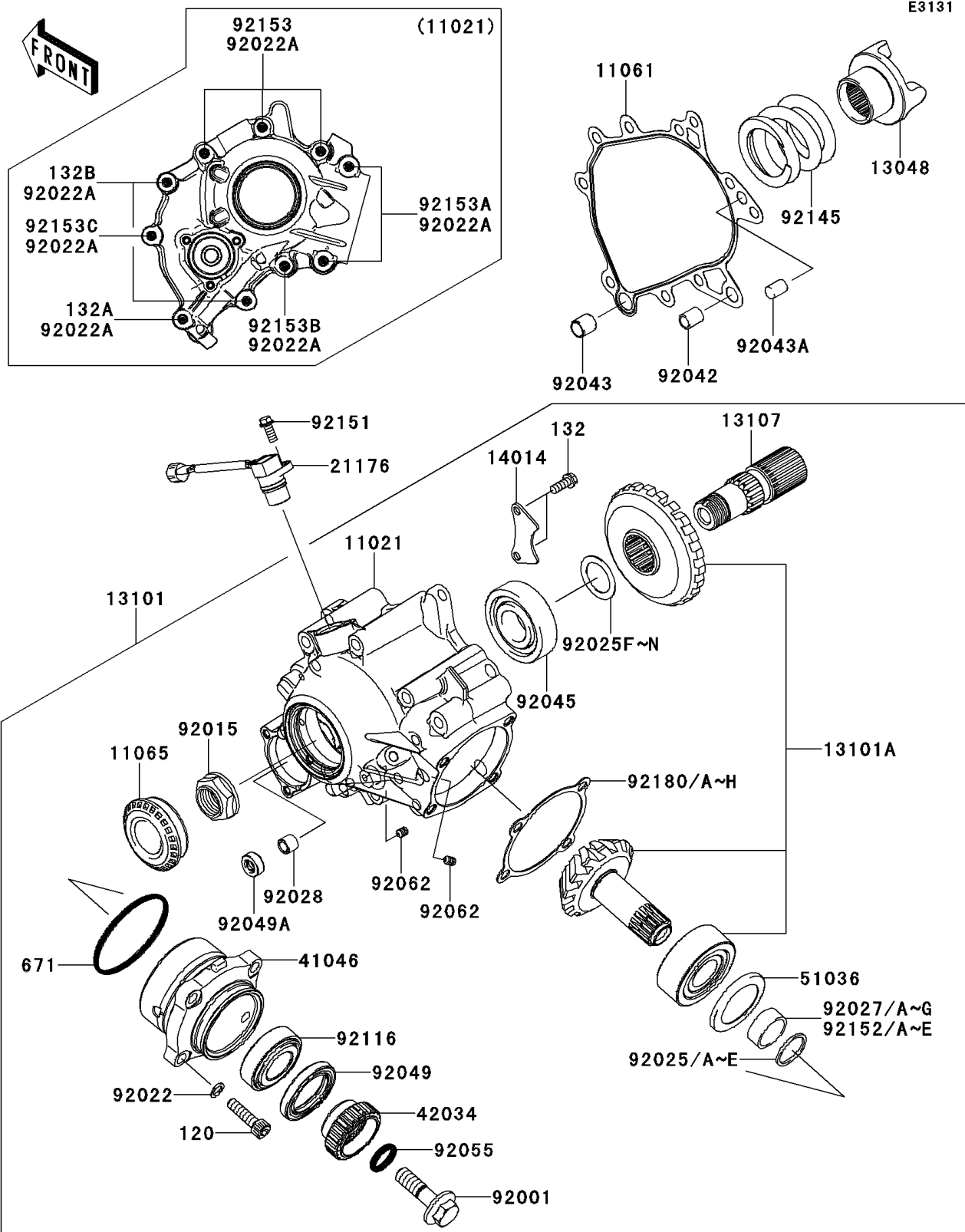


## 2010 Concours® 14 ABS PARTS DIAGRAM

Front Bevel Gear



## 2010 Concours® 14 ABS PARTS LIST

Front Bevel Gear

ITEM NAME	PART NUMBER	QUANTITY
CASE-ASSY,FR GEAR,P.SILVER (Ref # 11021)	11021-0014-458	1
GASKET,FR GEAR CASE (Ref # 11061)	11061-0310	1
CAP (Ref # 11065)	11065-0165	1
CAM-DAMPER (Ref # 13048)	13048-0004	1
GEAR-ASSY,P.SILVER (Ref # 13101)	13101-0119-458	1
GEAR-ASSY (Ref # 13101A)	13101-5094	1
SHAFT,DRIVE (Ref # 13107)	13107-0203	1
PLATE-POSITION (Ref # 14014)	14014-0031	1
SENSOR,SPEED (Ref # 21176)	21176-0037	1
HOUSING-BEARING (Ref # 41046)	41046-0024	1
COUPLING,FR,DRIVEN (Ref # 42034)	42034-0058	1
CUP (Ref # 51036)	51036-1002	1
BOLT,FLANGED,12X42 (Ref # 92001)	92001-1169	1
NUT,24MM (Ref # 92015)	92015-1554	1
WASHER,8.5X13X1 (Ref # 92022)	92022-1028	1
WASHER,8.5X16X1.2 (Ref # 92022A)	92022-1582	1
SHIM,25.2X29.8X1.70 (Ref # 92025)	92025-1072	1
SHIM,25.2X29.8X1.72 (Ref # 92025A)	92025-1073	1
SHIM,25.2X29.8X1.74 (Ref # 92025B)	92025-1074	1
SHIM,25.2X29.8X1.76 (Ref # 92025C)	92025-1075	1
SHIM,25.2X29.8X1.78 (Ref # 92025D)	92025-1076	1
SHIM,25.2X29.8X1.80 (Ref # 92025E)	92025-1077	1
SHIM,25.3X36X0.15 (Ref # 92025F)	92025-1688	1
SHIM,25.3X36X0.50 (Ref # 92025G)	92025-1689	1
SHIM,25.3X36X0.60 (Ref # 92025H)	92025-1690	1
SHIM,25.3X36X0.70 (Ref # 92025I)	92025-1691	1
SHIM,25.3X36X0.80 (Ref # 92025J)	92025-1692	1
SHIM,25.3X36X0.90 (Ref # 92025K)	92025-1693	1
SHIM,25.3X36X1.00 (Ref # 92025L)	92025-1694	1

## 2010 Concours® 14 ABS PARTS LIST

Front Bevel Gear

ITEM NAME	PART NUMBER	QUANTITY
SHIM,25.3X36X1.10 (Ref # 92025M)	92025-1695	1
SHIM,25.3X36X1.20 (Ref # 92025N)	92025-1696	1
COLLAR,25.2X29.8X10.4 (Ref # 92027)	92027-1403	1
COLLAR,25.2X29.8X10.5 (Ref # 92027A)	92027-1404	1
COLLAR,25.2X29.8X10.6 (Ref # 92027B)	92027-1405	1
COLLAR,25.2X29.8X10.7 (Ref # 92027C)	92027-1406	1
COLLAR,25.2X29.8X10.8 (Ref # 92027D)	92027-1407	1
COLLAR,25.2X29.8X10.9 (Ref # 92027E)	92027-1408	1
COLLAR,25.2X29.8X11.0 (Ref # 92027F)	92027-1409	1
COLLAR,25.2X29.8X11.1 (Ref # 92027G)	92027-1410	1
BUSHING,8X12X10 (Ref # 92028)	92028-1750	1
BOLT-SOCKET,8X30 (Ref # 120)	120CB0830	1
BOLT-FLANGED-SMALL,6X16 (Ref # 132)	132BA0616	1
BOLT-FLANGED-SMALL,8X50 (Ref # 132A)	132BB0850	1
BOLT-FLANGED-SMALL,8X35 (Ref # 132B)	132BD0835	1
O RING,69.4X3.1 (Ref # 671)	671D2570	1
PIN,DOWEL,12X14 (Ref # 92042)	92042-031	1
PIN,11.5X14X14 (Ref # 92043)	92043-1279	1
PIN,10X14 (Ref # 92043A)	92043-1506	1
BEARING-BALL,6305-13 (Ref # 92045)	92045-0063	1
SEAL-OIL,TC35527 (Ref # 92049)	92049-1038	1
SEAL-OIL (Ref # 92049A)	92049-1566	1
RING-O,18.7X3.5 (Ref # 92055)	92055-0130	1
NOZZLE,6X8,GREEN (Ref # 92062)	92062-1078	1
BEARING-ROLLER,HI-CAP30205 (Ref # 92116)	92116-1062	1
SPRING,CAM DAMPER (Ref # 92145)	92145-0430	1
BOLT,FLANGED,6X14 (Ref # 92151)	92151-1755	1
COLLAR,25.2X29.8X11.2 (Ref # 92152)	92152-0480	1
COLLAR,25.2X29.8X11.3 (Ref # 92152A)	92152-0481	1

## 2010 Concours® 14 ABS PARTS LIST

Front Bevel Gear

ITEM NAME	PART NUMBER	QUANTITY
COLLAR,25.2X29.8X11.4 (Ref # 92152B)	92152-0482	1
COLLAR,25.2X29.8X11.5 (Ref # 92152C)	92152-0483	1
COLLAR,25.2X29.8X11.6 (Ref # 92152D)	92152-0484	1
COLLAR,25.2X29.8X11.7 (Ref # 92152E)	92152-0485	1
BOLT,8X95 (Ref # 92153)	92153-0434	1
BOLT,8X92 (Ref # 92153A)	92153-1874	1
BOLT,FLANGED,8X95 (Ref # 92153B)	92153-1953	1
BOLT,FLANGED-SMALL,8X35 (Ref # 92153C)	92153-1954	1
SHIM,T=0.1 (Ref # 92180)	92180-0227	1
SHIM,T=0.15 (Ref # 92180A)	92180-0228	1
SHIM,T=0.5 (Ref # 92180B)	92180-0229	1
SHIM,T=0.6 (Ref # 92180C)	92180-0230	1
SHIM,T=0.7 (Ref # 92180D)	92180-0231	1
SHIM,T=0.8 (Ref # 92180E)	92180-0232	1
SHIM,T=0.9 (Ref # 92180F)	92180-0233	1
SHIM,T=1.0 (Ref # 92180G)	92180-0234	1
SHIM,T=1.2 (Ref # 92180H)	92180-0235	1