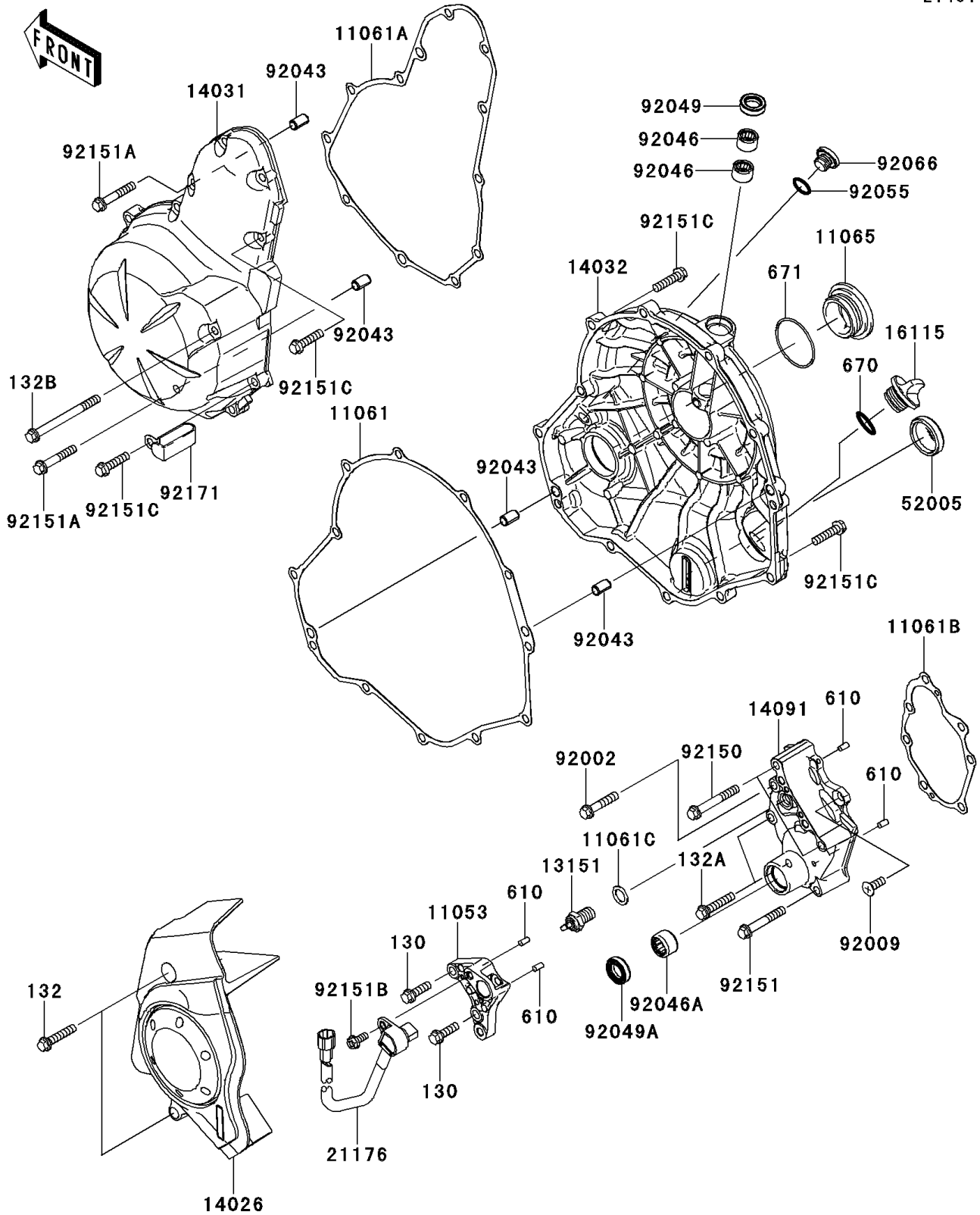


2009 ER-6n PARTS DIAGRAM

Engine Cover(s)

E1431



2009 ER-6n PARTS LIST

Engine Cover(s)

ITEM NAME	PART NUMBER	QUANTITY
BOLT-FLANGED,6X20 (Ref # 130)	130BA0620	1
BOLT-FLANGED-SMALL,6X30 (Ref # 132)	132BB0630	1
BOLT-FLANGED-SMALL,6X30 (Ref # 132A)	132BC0630	1
BOLT-FLANGED-SMALL,6X70 (Ref # 132B)	132BC0670	1
ROLLER,4X8 (Ref # 610)	610A0408	1
O RING,20MM (Ref # 670)	670B2020	1
O RING,40MM (Ref # 671)	671B2540	1
BRACKET (Ref # 11053)	11053-1739	1
GASKET,CLUTCH COVER (Ref # 11061)	11061-0164	1
GASKET,GENERATOR COVER (Ref # 11061A)	11061-0165	1
GASKET,TRANSMISSION COVER (Ref # 11061B)	11061-0166	1
GASKET,10.5X16X1 (Ref # 11061C)	11061-0373	1
CAP (Ref # 11065)	11065-0281	1
SWITCH-COMP,NEUTRAL (Ref # 13151)	13151-1102	1
COVER-CHAIN (Ref # 14026)	14026-0071	1
COVER-GENERATOR (Ref # 14031)	14031-0096	1
COVER-CLUTCH (Ref # 14032)	14032-0115	1
COVER,TRANSMISSION (Ref # 14091)	14091-1673	1
CAP-OIL FILLER (Ref # 16115)	16115-1053	1
SENSOR,SPEED (Ref # 21176)	21176-0065	1
GAUGE,OIL LEVEL (Ref # 52005)	52005-0071	1
BOLT,6X30 (Ref # 92002)	92002-1534	1
SCREW,6X16 (Ref # 92009)	92009-1360	1
PIN,6.2X8X14 (Ref # 92043)	92043-1263	1
BEARING-NEEDLE,HK1210 (Ref # 92046)	92046-1010	1
BEARING-NEEDLE,HK1312 (Ref # 92046A)	92046-1148	1
SEAL-OIL,CLUTCH RELEASE (Ref # 92049)	92049-1475	1
SEAL-OIL,TC13225.5 (Ref # 92049A)	92049-1519	1
RING-O,13.0X1.9 (Ref # 92055)	92055-1011	1

2009 ER-6n PARTS LIST

Engine Cover(s)

ITEM NAME	PART NUMBER	QUANTITY
PLUG,12X9.1 (Ref # 92066)	92066-0131	1
BOLT,6X45 (Ref # 92150)	92150-1884	1
BOLT,6X40 (Ref # 92151)	92151-1131	1
BOLT,6X35 (Ref # 92151A)	92151-1135	1
BOLT,FLANGED,5X12 (Ref # 92151B)	92151-1305	1
BOLT,FLANGED-SMALL,6X25 (Ref # 92151C)	92151-1930	1
CLAMP (Ref # 92171)	92171-1873	1