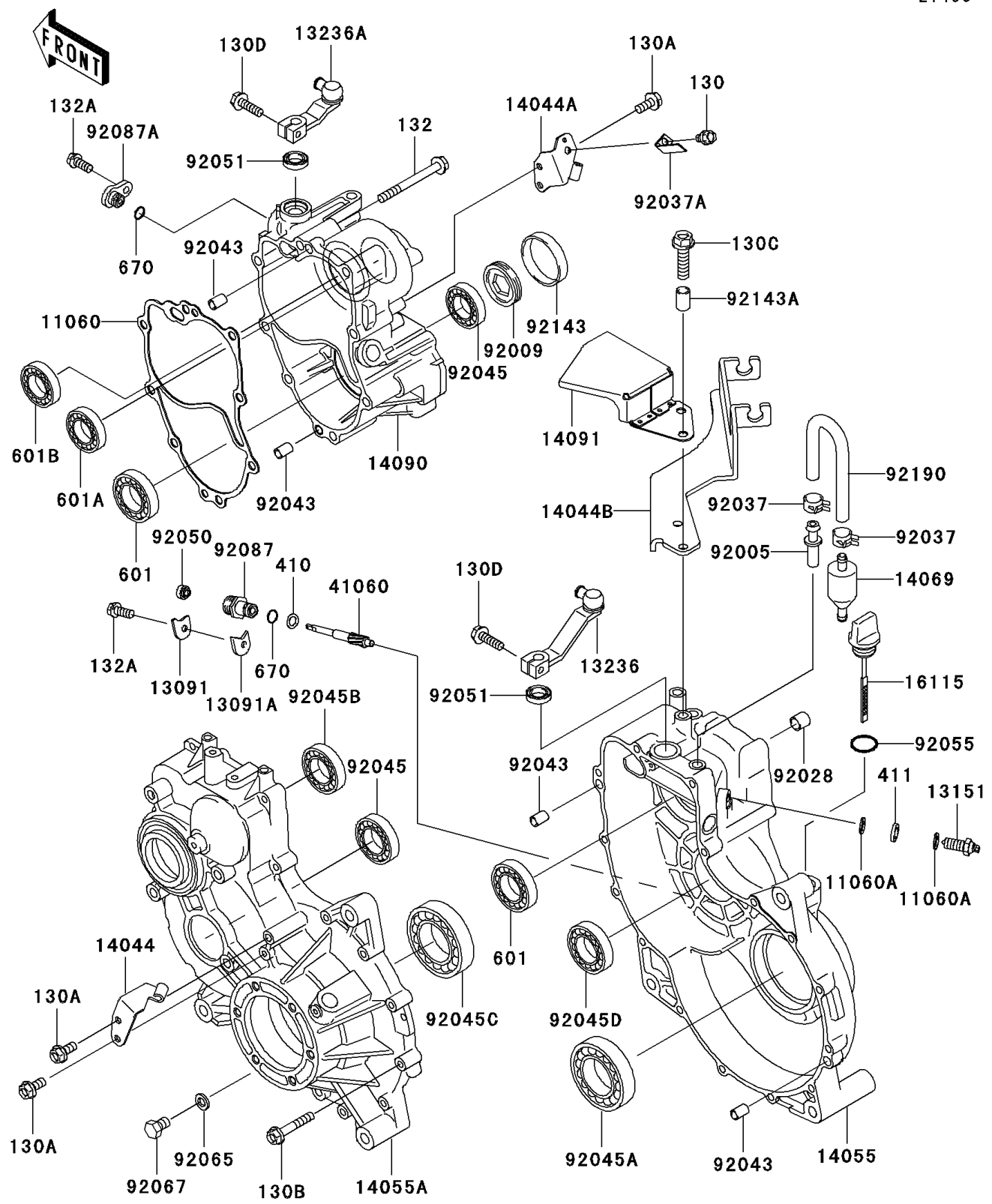


2010 MULE™ 4010 Trans4x4® Diesel Realtree APG HD® PARTS DIAGRAM

Gear Box

E1450



2010 MULE™ 4010 Trans4x4® Diesel Realtree APG HD® PARTS LIST

Gear Box

| ITEM NAME | PART NUMBER | QUANTITY |
|---------------------------------------|-------------|----------|
| GASKET,GEAR CASE COVER (Ref # 11060) | 11060-1310 | 1 |
| GASKET (Ref # 11060A) | 11060-1966 | 1 |
| HOLDER,T=2.3 (Ref # 13091) | 13091-1008 | 1 |
| HOLDER,T=3.2 (Ref # 13091A) | 13091-1009 | 1 |
| SWITCH-COMP (Ref # 13151) | 13151-1093 | 1 |
| LEVER-COMP,CHANGE (Ref # 13236) | 13236-0030 | 1 |
| LEVER-COMP (Ref # 13236A) | 13236-1363 | 1 |
| HOLDER-CABLE (Ref # 14044) | 14044-0003 | 1 |
| HOLDER-CABLE (Ref # 14044A) | 14044-0004 | 1 |
| HOLDER-CABLE (Ref # 14044B) | 14044-1097 | 1 |
| CASE-GEAR,RH (Ref # 14055) | 14055-1110 | 1 |
| CASE-GEAR,LH (Ref # 14055A) | 14055-1144 | 1 |
| BREATHER (Ref # 14069) | 14069-1051 | 1 |
| COVER,GEAR CASE,HI/LOW (Ref # 14090) | 14090-1238 | 1 |
| COVER,GEAR CASE (Ref # 14091) | 14091-0472 | 1 |
| CAP-OIL FILLER (Ref # 16115) | 16115-1060 | 1 |
| GEAR-METER SCREW (Ref # 41060) | 41060-1148 | 1 |
| FITTING,BREATHER (Ref # 92005) | 92005-1127 | 1 |
| SCREW,55MM (Ref # 92009) | 92009-1290 | 1 |
| BUSHING,23X30X13 (Ref # 92028) | 92028-132 | 1 |
| CLAMP,TUBE (Ref # 92037) | 92037-1505 | 1 |
| CLAMP (Ref # 92037A) | 92037-1680 | 1 |
| PIN,6.2X8X14 (Ref # 92043) | 92043-1263 | 1 |
| BEARING-BALL,TMB304CCM (Ref # 92045) | 92045-1142 | 1 |
| BEARING-BALL,6010CM (Ref # 92045A) | 92045-1162 | 1 |
| BEARING-BALL,62/28 (Ref # 92045B) | 92045-1207 | 1 |
| BEARING-BALL,6210CM (Ref # 92045C) | 92045-1213 | 1 |
| BEARING-BALL,TMB205JR2 (Ref # 92045D) | 92045-1285 | 1 |
| SEAL-OIL (Ref # 92050) | 92050-075 | 1 |

2010 MULE™ 4010 Trans4x4® Diesel Realtree APG HD® PARTS LIST

Gear Box

| ITEM NAME | PART NUMBER | QUANTITY |
|--------------------------------------|-------------|----------|
| SEAL-OIL,TB13225.5 (Ref # 92051) | 92051-005 | 1 |
| RING-O,20X3 (Ref # 92055) | 92055-2185 | 1 |
| GASKET,10.5X16X1 (Ref # 92065) | 92065-058 | 1 |
| PLUG,DRAIN,10X12 (Ref # 92067) | 92067-001 | 1 |
| BUSHING-METER GEAR (Ref # 92087) | 92087-010 | 1 |
| BUSHING-METER GEAR (Ref # 92087A) | 92087-1058 | 1 |
| COLLAR,66X70X11 (Ref # 92143) | 92143-1120 | 1 |
| COLLAR,9.5X12.7X14 (Ref # 92143A) | 92143-1752 | 1 |
| TUBE (Ref # 92190) | 92190-3807 | 1 |
| BOLT-FLANGED,6X10 (Ref # 130) | 130AA0610 | 1 |
| BOLT-FLANGED,6X14 (Ref # 130A) | 130AA0614 | 1 |
| BOLT-FLANGED,6X35 (Ref # 130B) | 130BA0635 | 1 |
| BOLT-FLANGED,8X30 (Ref # 130C) | 130BA0830 | 1 |
| BOLT-FLANGED,6X20 (Ref # 130D) | 130CA0620 | 1 |
| BOLT-FLANGED-SMALL,8X60 (Ref # 132) | 132BA0860 | 1 |
| BOLT-FLANGED-SMALL,6X14 (Ref # 132A) | 132BB0614 | 1 |
| WASHER-PLAIN-SMALL (Ref # 410) | 410AA0600 | 1 |
| WASHER-PLAIN,10MM (Ref # 411) | 411AA1000 | 1 |
| BEARING-BALL,#6007C3 (Ref # 601) | 601B6007 | 1 |
| BEARING-BALL,#6303C3 (Ref # 601A) | 601B6303 | 1 |
| BEARING-BALL (Ref # 601B) | 601B6303U | 1 |
| O RING,10MM (Ref # 670) | 670D1510 | 1 |