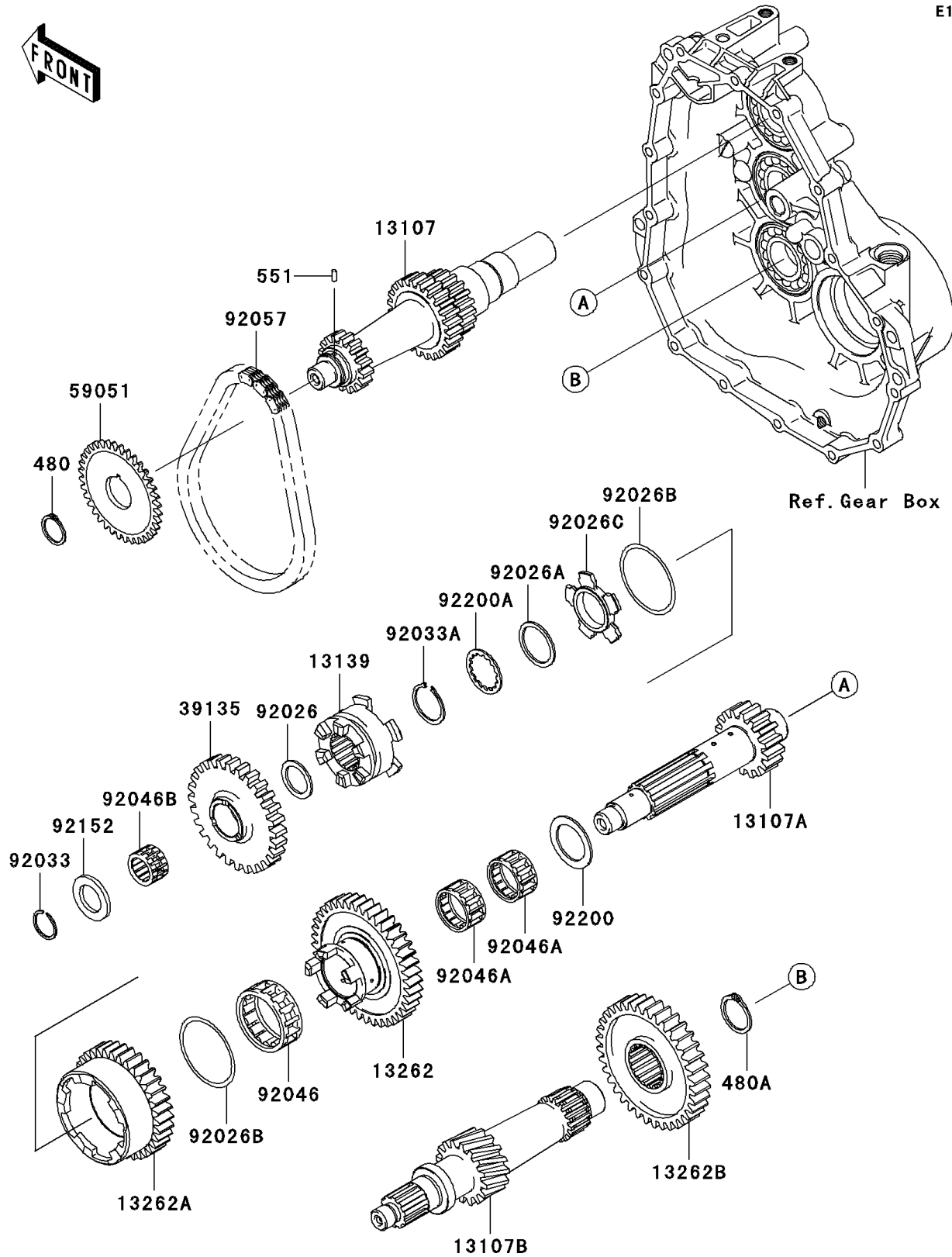


2006 Mule™ 610 4x4 Hardwoods Green HD® PARTS DIAGRAM

Transmission

E1361



2006 Mule™ 610 4x4 Hardwoods Green HD® PARTS LIST

Transmission

| ITEM NAME | PART NUMBER | QUANTITY |
|---|-------------|----------|
| CIRCLIP-TYPE-C,25MM (Ref # 480) | 480J2500 | 1 |
| CIRCLIP-TYPE-C,32MM (Ref # 480A) | 480J3200 | 1 |
| PIN-DOWEL,3X8 (Ref # 551) | 551A0308 | 1 |
| SHAFT,FIRST,INPUT,16T&24T&19T (Ref # 13107) | 13107-0039 | 1 |
| SHAFT,SECOND,18T (Ref # 13107A) | 13107-0078 | 1 |
| SHAFT,THIRD,16T (Ref # 13107B) | 13107-0088 | 1 |
| SHIFTER,FR/RR (Ref # 13139) | 13139-0004 | 1 |
| GEAR,LOW,41T (Ref # 13262) | 13262-0106 | 1 |
| GEAR,HIGH,35T (Ref # 13262A) | 13262-0107 | 1 |
| GEAR-TRANSMISSION SPUR,36T (Ref # 13262B) | 13262-0108 | 1 |
| SPROCKET-DRIVEN,30T (Ref # 39135) | 39135-0001 | 1 |
| GEAR-SPUR,37T (Ref # 59051) | 59051-0049 | 1 |
| SPACER,21.2X29X1.6 (Ref # 92026) | 92026-1568 | 1 |
| SPACER,28.2X34.5X1.6 (Ref # 92026A) | 92026-1587 | 1 |
| SPACER,48.2X54.3X1.0 (Ref # 92026B) | 92026-1599 | 1 |
| SPACER,HI&LOW (Ref # 92026C) | 92026-1600 | 1 |
| RING-SNAP,20MM (Ref # 92033) | 92033-015 | 1 |
| RING-SNAP,25.9X30.6X1.2 (Ref # 92033A) | 92033-1037 | 1 |
| BEARING-NEEDLE,HIGH GEAR (Ref # 92046) | 92046-1276 | 1 |
| BEARING-NEEDLE,FWF-283317 (Ref # 92046A) | 92046-1278 | 1 |
| BEARING-NEEDLE,REVERSE GEAR (Ref # 92046B) | 92046-1279 | 1 |
| CHAIN,REVERSE,23RH302-38ASM (Ref # 92057) | 92057-0072 | 1 |
| COLLAR,21.2X34.0X3.0 (Ref # 92152) | 92152-0241 | 1 |
| WASHER,28.2X40.0X1.6 (Ref # 92200) | 92200-0090 | 1 |
| WASHER,28.5X34.0X1.5 (Ref # 92200A) | 92200-1240 | 1 |