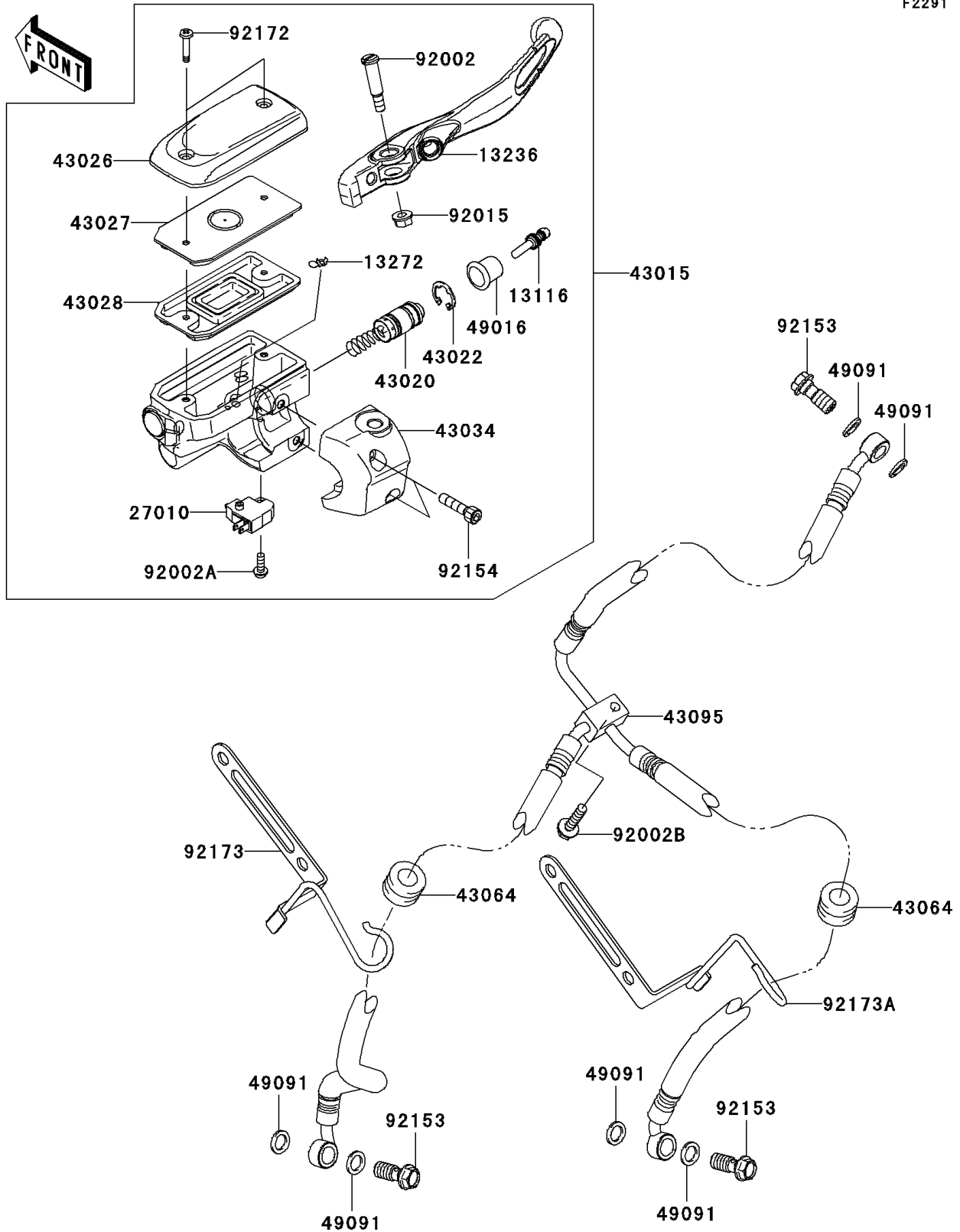


2009 Vulcan® 1700 Classic LT PARTS DIAGRAM

Front Master Cylinder

F2291



2009 Vulcan® 1700 Classic LT PARTS LIST

Front Master Cylinder

ITEM NAME	PART NUMBER	QUANTITY
ROD-PUSH (Ref # 13116)	13116-0039	1
LEVER-COMP,FRONT BRAKE (Ref # 13236)	13236-0181	1
PLATE (Ref # 13272)	13272-0573	1
SWITCH,BRAKE (Ref # 27010)	27010-0025	1
CYLINDER-ASSY-MASTER,FR (Ref # 43015)	43015-0131	1
PISTON-COMP-BRAKE (Ref # 43020)	43020-0014	1
STOPPER-BRAKE,PISTON (Ref # 43022)	43022-1010	1
CAP-BRAKE (Ref # 43026)	43026-0017	1
PLATE-DIAPHRAGM (Ref # 43027)	43027-0004	1
DIAPHRAGM (Ref # 43028)	43028-0010	1
HOLDER-BRAKE,MASTER CYLINDER (Ref # 43034)	43034-0041	1
GROMMET,HOSE CLAMP (Ref # 43064)	43064-006	1
HOSE-BRAKE,FR (Ref # 43095)	43095-0458	1
COVER-SEAL,MASTER CYLINDER (Ref # 49016)	49016-1044	1
WASHER-SEAL,10.1X14.5X1.5 (Ref # 49091)	49091-0001	1
BOLT,LEVER SET,BLACK (Ref # 92002)	92002-1322	1
BOLT,SCREW,4X12 (Ref # 92002A)	92002-1323	1
BOLT,6X26.6 (Ref # 92002B)	92002-1912	1
NUT,FLANGED,6MM,BLACK (Ref # 92015)	92015-1233	1
BOLT,OIL,L=23 (Ref # 92153)	92153-0627	1
BOLT,SOCKET (Ref # 92154)	92154-0167	1
SCREW,4MM (Ref # 92172)	92172-0385	1
CLAMP,FRONT FENDER,LH (Ref # 92173)	92173-0073	1
CLAMP,FRONT FENDER,RH (Ref # 92173A)	92173-0074	1