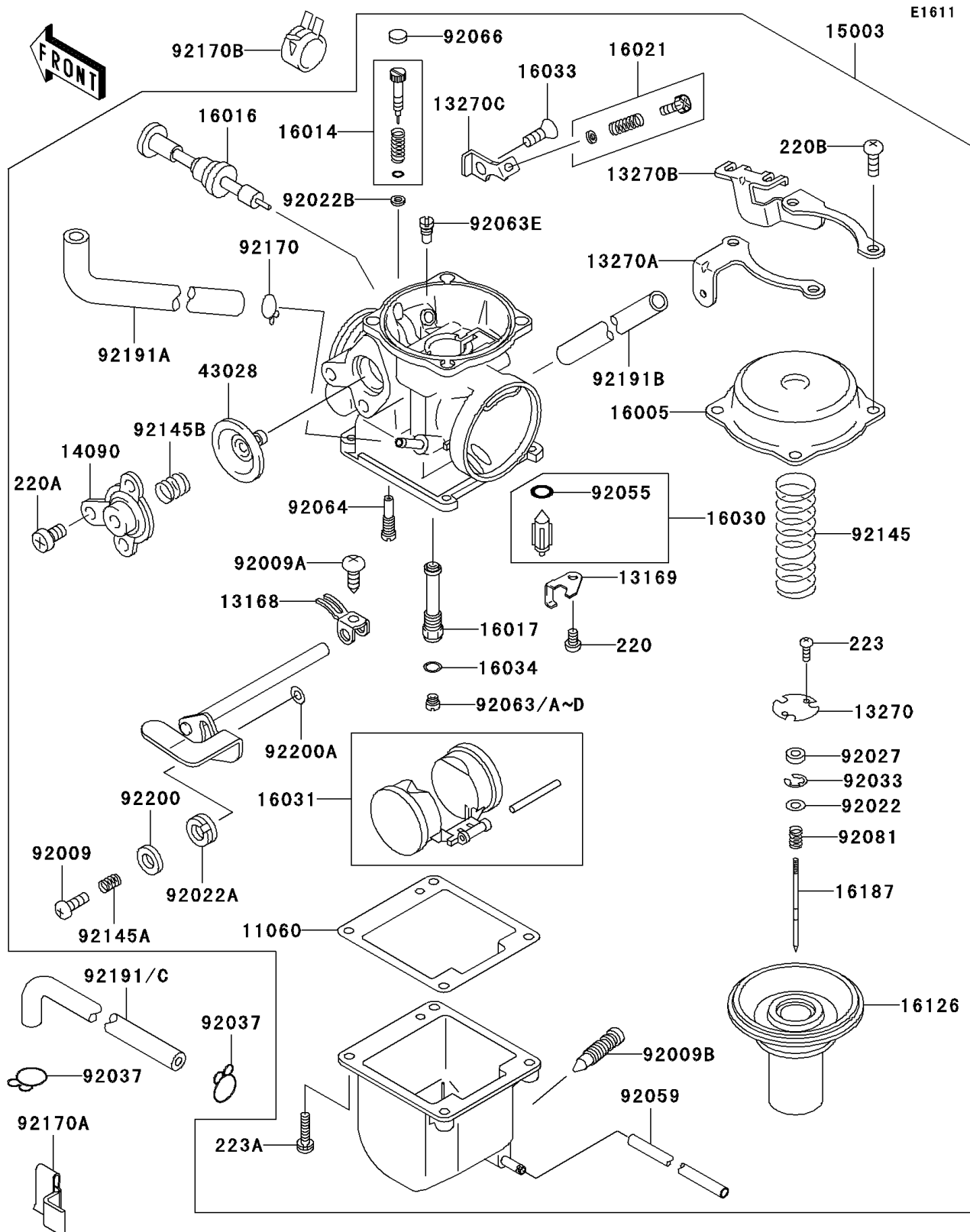


2006 Eliminator® 125 PARTS DIAGRAM

Carburetor(AGF/A7F)



2006 Eliminator® 125 PARTS LIST

Carburetor(AGF/A7F)

ITEM NAME	PART NUMBER	QUANTITY
GASKET,FLOAT CHAMBER (Ref # 11060)	11060-1849	1
LEVER,STARTER (Ref # 13168)	13168-1642	1
PLATE,FLOAT VALVE (Ref # 13169)	13169-1482	1
PLATE,VACUUM VALVE (Ref # 13270)	13270-1981	1
PLATE,LH (Ref # 13270A)	13270-1982	1
PLATE,RH (Ref # 13270B)	13270-1983	1
PLATE,THROTTLE STOP SCREW (Ref # 13270C)	13270-1984	1
COVER,AIR CUT VALVE (Ref # 14090)	14090-1931	1
CARBURETOR-ASSY,BS28 (Ref # 15003)	15003-0106	1
TOP-CHAMBER (Ref # 16005)	16005-0004	1
SCREW-PILOT AIR (Ref # 16014)	16014-1117	1
PLUNGER (Ref # 16016)	16016-1106	1
JET-NEEDLE,0-8M (Ref # 16017)	16017-1432	1
SCREW-THROTTLE STOP (Ref # 16021)	16021-1217	1
VALVE-FLOAT (Ref # 16030)	16030-1086	1
FLOAT (Ref # 16031)	16031-1094	1
SCREW,5X8 (Ref # 16033)	16033-024	1
WASHER,MAIN JET (Ref # 16034)	16034-001	1
VALVE,VACUUM (Ref # 16126)	16126-1352	1
NEEDLE-JET,4C17 (Ref # 16187)	16187-1188	1
DIAPHRAGM,COASTING RICHER (Ref # 43028)	43028-1026	1
SCREW,STARTER LEVER (Ref # 92009)	92009-1823	1
SCREW,STARTER (Ref # 92009A)	92009-1824	1
SCREW,DRAIN (Ref # 92009B)	92009-1826	1
WASHER,JET NEEDLE (Ref # 92022)	92022-1123	1
WASHER,PLAIN,DURACON (Ref # 92022A)	92022-1147	1
WASHER,ADJUST SCREW (Ref # 92022B)	92022-1187	1
COLLAR,THROTTLE VALVE (Ref # 92027)	92027-1103	1
RING-SNAP (Ref # 92033)	92033-1290	1

2006 Eliminator® 125 PARTS LIST

Carburetor(A6F/A7F)

ITEM NAME	PART NUMBER	QUANTITY
CLAMP (Ref # 92037)	92037-1610	1
RING-O (Ref # 92055)	92055-1105	1
TUBE,3X5X220,OVERFLOW (Ref # 92059)	92059-1243	1
JET-MAIN,#A127.5 (Ref # 92063)	92063-1100	1
JET-MAIN,#A122.5 (Ref # 92063A)	92063-1101	1
JET-MAIN,#A125 (Ref # 92063B)	92063-1102	1
JET-MAIN,#A130 (Ref # 92063C)	92063-1103	1
JET-MAIN,#A120 (Ref # 92063D)	92063-1106	1
SCREW-PAN-CROS,4X6 (Ref # 220)	220AA0406	1
SCREW-PAN-CROS,4X10 (Ref # 220A)	220AA0410	1
SCREW-PAN-CROSS,5X10 (Ref # 220B)	220AA0510	1
SCREW-PAN-WS-CROS,3X7 (Ref # 223)	223AA0307	1
SCREW-PAN-WS-CROS,4X14 (Ref # 223A)	223AA0414	1
JET,#70 (Ref # 92063E)	92063-2059	1
JET-PILOT,#32.5 (Ref # 92064)	92064-1230	1
PLUG,PILOT AIR SCREW (Ref # 92066)	92066-1501	1
SPRING,JET NEEDLE (Ref # 92081)	92081-1126	1
SPRING,VACUUM VALVE (Ref # 92145)	92145-1124	1
SPRING,STARTER LEVER (Ref # 92145A)	92145-1125	1
SPRING,AIR CUT VALVE (Ref # 92145B)	92145-1127	1
CLAMP (Ref # 92170)	92170-1818	1
CLAMP (Ref # 92170A)	92170-1936	1
CLAMP (Ref # 92170B)	92170-2043	1
TUBE (Ref # 92191A)	92191-1244	1
TUBE,5X8X300 (Ref # 92191B)	92191-1245	1
WASHER,STARTER LEVER (Ref # 92200)	92200-1397	1
WASHER,STARTER LEVER (Ref # 92200A)	92200-1398	1
TUBE,L=115 (Ref # 92191)	92191-1210	1
TUBE,L=66.8 (Ref # 92191C)	92191-1623	1