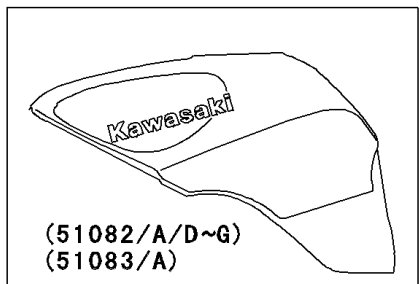
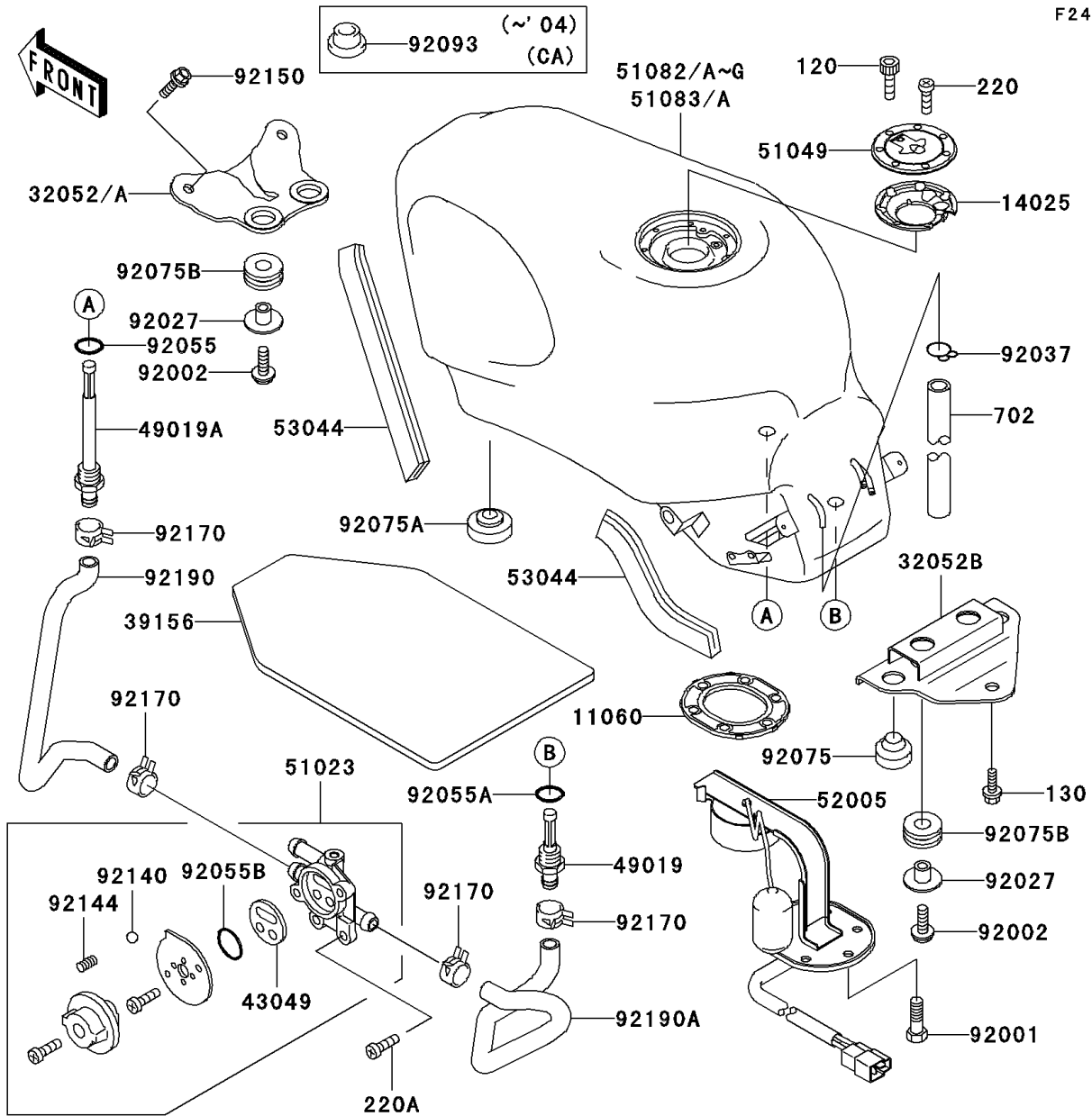


## 2002 NINJA® ZX™-6 PARTS DIAGRAM

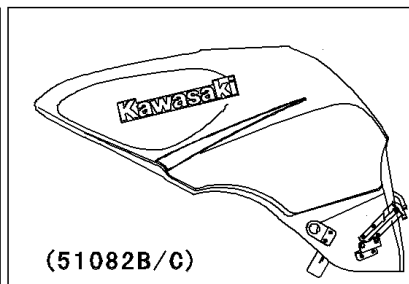
Fuel Tank(4/4)

F2410



(51082/A/D~G)  
(51083/A)

WD



(51082B/C)

WD

|            |              |
|------------|--------------|
| (51082/A)  | C. P. Red    |
| (51082B)   | C. L. Blue   |
| (51082C)   | M. P. Silver |
| (51082D/E) | P. M. Black  |
| (51082F)   | G. Silver    |
| (51082G)   | C. T. Blue   |
| (51083/A)  | M. R. Red    |

## 2002 NINJA® ZX™-6 PARTS LIST

Fuel Tank(4/4)

| ITEM NAME                          | PART NUMBER | QUANTITY |
|------------------------------------|-------------|----------|
| GASKET,FUEL GAUGE (Ref # 11060)    | 11060-1337  | 1        |
| COVER,TANK CAP (Ref # 14025)       | 14025-1913  | 1        |
| BRACKET-TANK,RR (Ref # 32052B)     | 32052-1363  | 1        |
| PAD,FUEL TANK (Ref # 39156)        | 39156-1662  | 1        |
| PACKING,TAP VALVE (Ref # 43049)    | 43049-1091  | 1        |
| FILTER-FUEL (Ref # 49019)          | 49019-1070  | 1        |
| FILTER-FUEL,"ON" (Ref # 49019A)    | 49019-1071  | 1        |
| TAP-ASSY,FUEL (Ref # 51023)        | 51023-1320  | 1        |
| CAP-TANK,FUEL (Ref # 51049)        | 51049-1130  | 1        |
| GAUGE,FUEL (Ref # 52005)           | 52005-1105  | 1        |
| TRIM (Ref # 53044)                 | 53044-1137  | 1        |
| BOLT,FUEL GAUGE (Ref # 92001)      | 92001-1069  | 1        |
| BOLT,6X20 (Ref # 92002)            | 92002-1237  | 1        |
| COLLAR,L=13.1 (Ref # 92027)        | 92027-251   | 1        |
| CLAMP,TUBE (Ref # 92037)           | 92037-010   | 1        |
| RING-O,ID=9.5 (Ref # 92055)        | 92055-1386  | 1        |
| RING-O,11.5X1.5 (Ref # 92055A)     | 92055-1387  | 1        |
| RING-O,TAP LEVER (Ref # 92055B)    | 92055-1419  | 1        |
| DAMPER (Ref # 92075)               | 92075-015   | 1        |
| DAMPER (Ref # 92075A)              | 92075-157   | 1        |
| DAMPER (Ref # 92075B)              | 92075-1690  | 1        |
| BOLT-SOCKET (Ref # 120)            | 120S0512    | 1        |
| BOLT-FLANGED,8X20 (Ref # 130)      | 130J0820    | 1        |
| SCREW-PAN-CROSS (Ref # 220)        | 220F0508    | 1        |
| SCREW-PAN-CROSS (Ref # 220A)       | 220F0608    | 1        |
| TUBE-RUBBER,7X10X600 (Ref # 702)   | 702A07600   | 1        |
| BALL,STAINLESS,5/32" (Ref # 92140) | 92140-1051  | 1        |
| SPRING,FUEL TAP KNOB (Ref # 92144) | 92144-1212  | 1        |
| BOLT,6X14 (Ref # 92150)            | 92150-1340  | 1        |

## 2002 NINJA® ZX™-6 PARTS LIST

Fuel Tank(4/4)

| ITEM NAME                                | PART NUMBER   | QUANTITY |
|------------------------------------------|---------------|----------|
| CLAMP (Ref # 92170)                      | 92170-1492    | 1        |
| TUBE,TAP-FILTER (Ref # 92190)            | 92190-1332    | 1        |
| TUBE,FUEL,RES (Ref # 92190A)             | 92190-1333    | 1        |
| BRACKET-TANK,FR,P.C.GRAY (Ref # 32052)   | 32052-1362-CQ | 1        |
| BRACKET-TANK,FR,C.GRAY (Ref # 32052A)    | 32052-1362-EZ | 1        |
| TANK-COMP-FUEL,C.P.RED (Ref # 51082)     | 51082-5120-V9 | 1        |
| TANK-COMP-FUEL,C.P.RED (Ref # 51082A)    | 51082-5121-V9 | 1        |
| TANK-COMP-FUEL,C.L.BLUE (Ref # 51082B)   | 51082-5132-E1 | 1        |
| TANK-COMP-FUEL,M.P.SILVER (Ref # 51082C) | 51082-5133-GU | 1        |
| SEAL,FUEL TANK CAP (Ref # 92093)         | 92093-1030    | 1        |