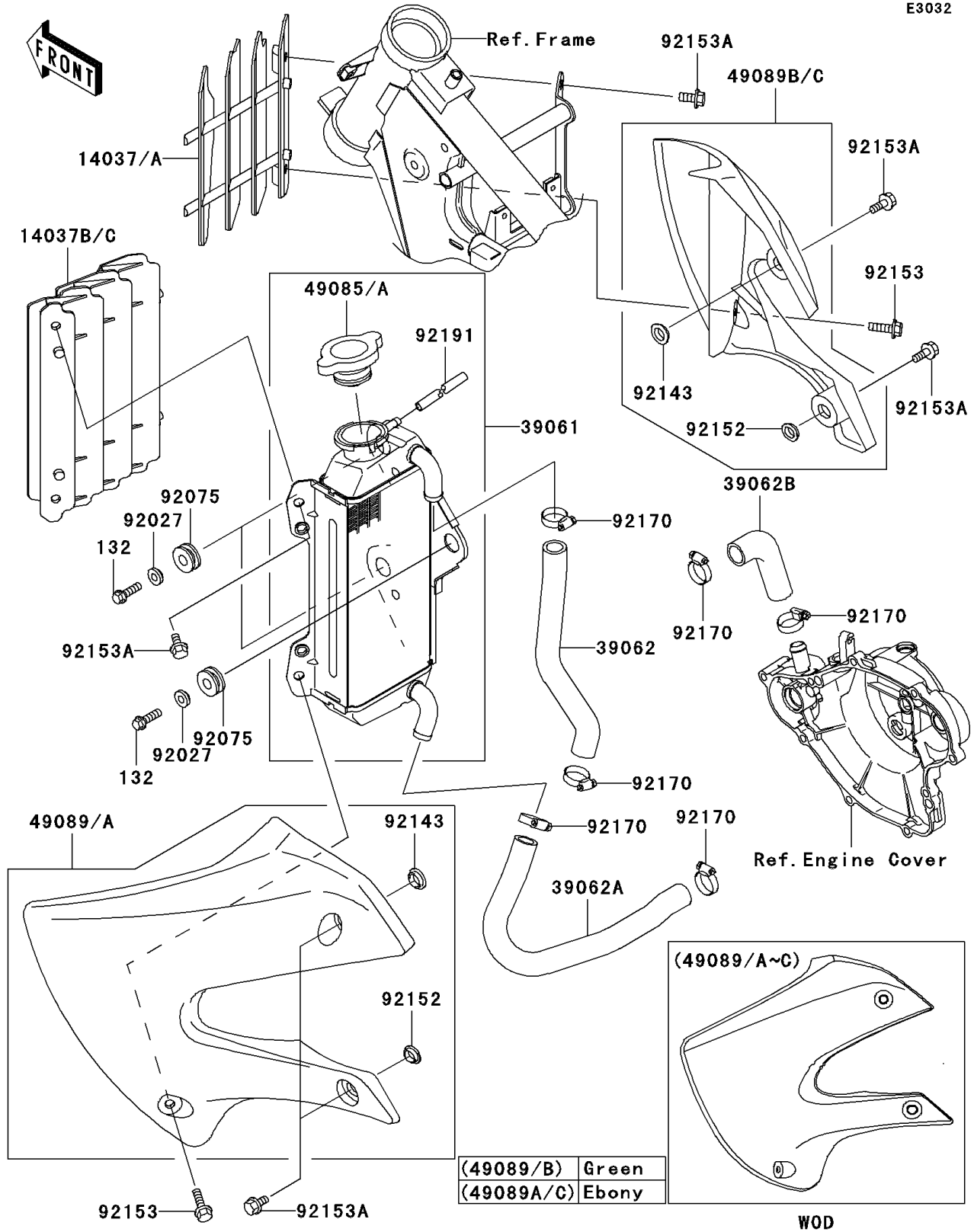


2006 KX™65 PARTS DIAGRAM

Radiator

E3032



2006 KX™65 PARTS LIST

Radiator

| ITEM NAME | PART NUMBER | QUANTITY |
|---|----------------|----------|
| BOLT-FLANGED-SMALL,6X20 (Ref # 132) | 132BC0620 | 1 |
| SCREEN,RH,WHITE (Ref # 14037) | 14037-0047-RZ | 1 |
| SCREEN,LH,WHITE (Ref # 14037B) | 14037-1266-RZ | 1 |
| RADIATOR-ASSY (Ref # 39061) | 39061-1277 | 1 |
| HOSE-COOLING,HEAD-RADIATOR (Ref # 39062) | 39062-1808 | 1 |
| HOSE-COOLING,PUMP-RADIATOR (Ref # 39062A) | 39062-1809 | 1 |
| HOSE-COOLING,PIPE-CYLINDER (Ref # 39062B) | 39062-1810 | 1 |
| CAP-ASSY-PRESSURE,P1.1 (Ref # 49085) | 49085-1076 | 1 |
| CAP-ASSY-PRESSURE,P1.8 (Ref # 49085A) | 49085-1077 | 1 |
| SHROUD-ENGINE,LH,L.GREEN (Ref # 49089) | 49089-1144-290 | 1 |
| SHROUD-ENGINE,RH,L.GREEN (Ref # 49089B) | 49089-1145-290 | 1 |
| COLLAR,L=11.1 (Ref # 92027) | 92027-194 | 1 |
| DAMPER (Ref # 92075) | 92075-209 | 1 |
| COLLAR (Ref # 92143) | 92143-1196 | 1 |
| COLLAR (Ref # 92152) | 92152-1235 | 1 |
| BOLT,6X20 (Ref # 92153) | 92153-0502 | 1 |
| BOLT,6X12 (Ref # 92153A) | 92153-0503 | 1 |
| CLAMP (Ref # 92170) | 92170-1283 | 1 |
| TUBE (Ref # 92191) | 92191-1434 | 1 |