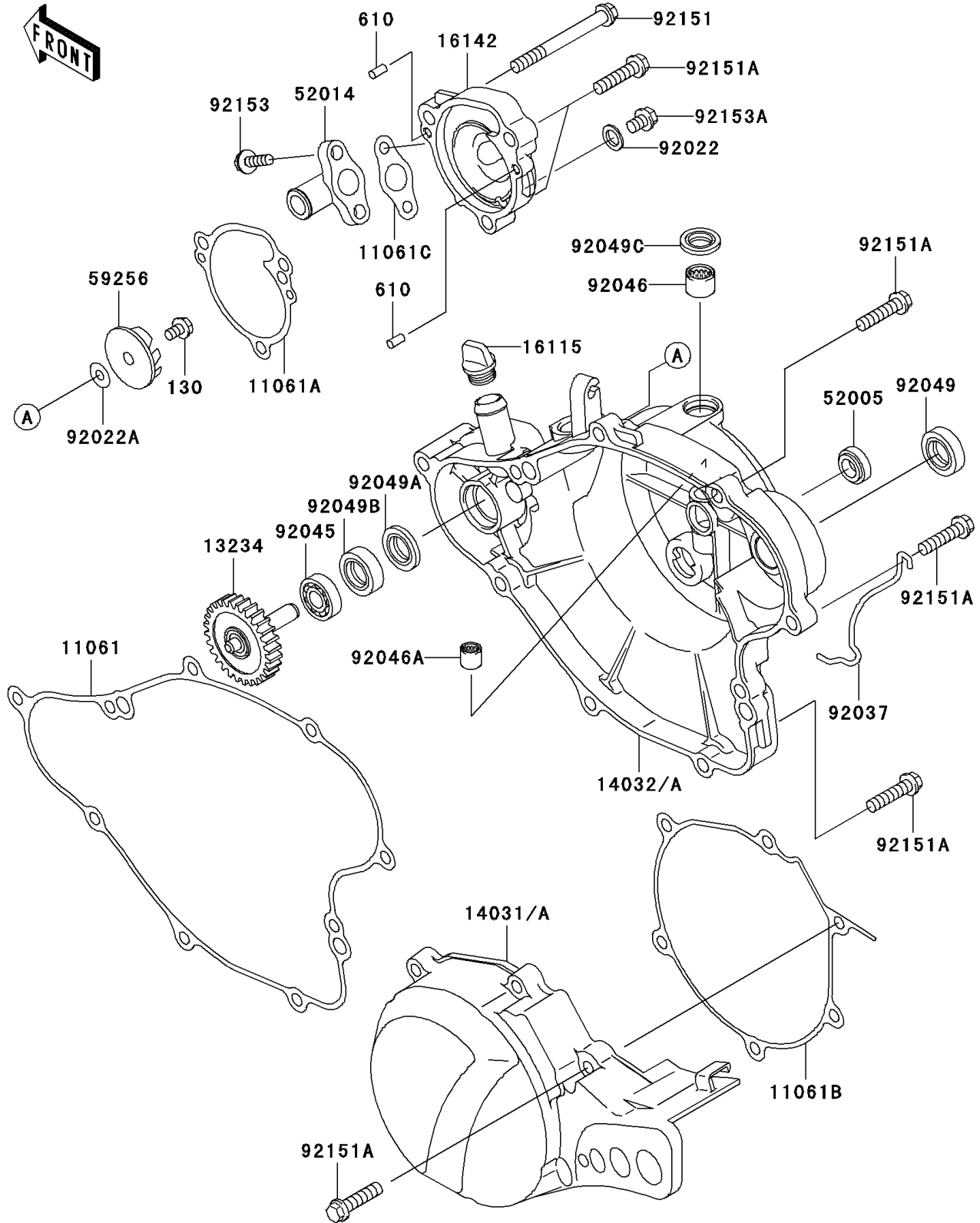


2006 KX™65 PARTS DIAGRAM

Engine Cover(s)

E1431



2006 KX™65 PARTS LIST

Engine Cover(s)

| ITEM NAME | PART NUMBER | QUANTITY |
|--|-------------|----------|
| BOLT-FLANGED,5X10 (Ref # 130) | 130CA0510 | 1 |
| ROLLER,4X8 (Ref # 610) | 610A0408 | 1 |
| GASKET,CLUTCH COVER (Ref # 11061) | 11061-0121 | 1 |
| GASKET,WATER PUMP COVER (Ref # 11061A) | 11061-0159 | 1 |
| GASKET,GENERATOR COVER (Ref # 11061B) | 11061-0193 | 1 |
| GASKET,ELBOW (Ref # 11061C) | 11061-0202 | 1 |
| SHAFT-COMP,PUMP (Ref # 13234) | 13234-1110 | 1 |
| COVER-GENERATOR (Ref # 14031) | 14031-0043 | 1 |
| COVER-CLUTCH (Ref # 14032) | 14032-0060 | 1 |
| CAP-OIL FILLER (Ref # 16115) | 16115-018 | 1 |
| COVER-PUMP (Ref # 16142) | 16142-0023 | 1 |
| GAUGE,OIL LEVEL (Ref # 52005) | 52005-0019 | 1 |
| ELBOW (Ref # 52014) | 52014-1094 | 1 |
| IMPELLER (Ref # 59256) | 59256-1064 | 1 |
| WASHER,6.1X12X1 (Ref # 92022) | 92022-077 | 1 |
| WASHER,5.2X13X1 (Ref # 92022A) | 92022-1380 | 1 |
| CLAMP,TUBE (Ref # 92037) | 92037-1236 | 1 |
| BEARING-BALL,608MC3 (Ref # 92045) | 92045-1305 | 1 |
| BEARING-NEEDLE,HK1010 (Ref # 92046) | 92046-1160 | 1 |
| BEARING-NEEDLE,6BTM109 (Ref # 92046A) | 92046-1217 | 1 |
| SEAL-OIL,SB16244 (Ref # 92049) | 92049-002 | 1 |
| SEAL-OIL,MH8X18X3.5-A (Ref # 92049A) | 92049-1359 | 1 |
| SEAL-OIL,MHSD8X18X10J-1 (Ref # 92049B) | 92049-1366 | 1 |
| SEAL-OIL,BG1408F0 (Ref # 92049C) | 92049-1414 | 1 |
| BOLT,6X60 (Ref # 92151) | 92151-1235 | 1 |
| BOLT,FLANGED-SMALL,6X25 (Ref # 92151A) | 92151-1930 | 1 |
| BOLT,5X16 (Ref # 92153) | 92153-0859 | 1 |
| BOLT,6X8 (Ref # 92153A) | 92153-0860 | 1 |