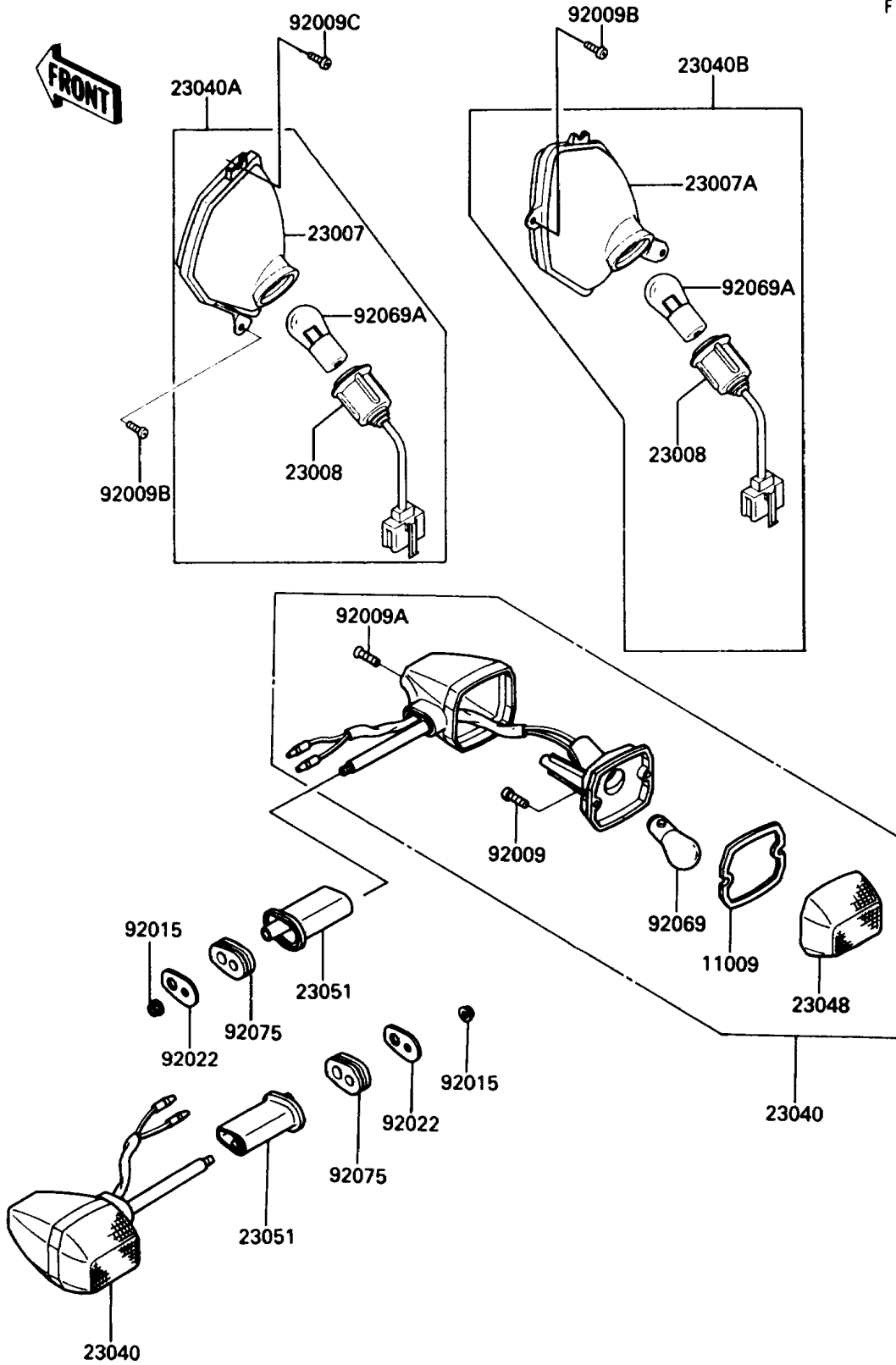


1989 PARTS DIAGRAM

Turn Signal

F 2730



1989 PARTS LIST

Turn Signal

| ITEM NAME | PART NUMBER | QUANTITY |
|--|-------------|----------|
| GASKET,SIGNAL LAMP (Ref # 11009) | 11009-1402 | 1 |
| LENS-COMP,SIGNAL LAMP,FR,LH (Ref # 23007) | 23007-1142 | 1 |
| LENS-COMP,SIGNAL LAMP,FR,RH (Ref # 23007A) | 23007-1143 | 1 |
| SOCKET-ASSY,SIGNAL LAMP,FR (Ref # 23008) | 23008-1299 | 1 |
| LAMP-SIGNAL,RR (Ref # 23040) | 23040-1108 | 1 |
| LAMP-SIGNAL,FR,LH (Ref # 23040A) | 23040-1136 | 1 |
| LAMP-SIGNAL,FR,RH (Ref # 23040B) | 23040-1137 | 1 |
| LENS-SIGNAL LAMP (Ref # 23048) | 23048-1054 | 1 |
| BRACKET-SIGNAL LAMP (Ref # 23051) | 23051-1165 | 1 |
| SCREW,TAPPING,3X16 (Ref # 92009) | 92009-1115 | 1 |
| SCREW,TAPPING,4X20 (Ref # 92009A) | 92009-1304 | 1 |
| SCREW,4X18 (Ref # 92009B) | 92009-1355 | 1 |
| SCREW,TAPPING,4X12 (Ref # 92009C) | 92009-1444 | 1 |
| NUT,FLANGED,6MM (Ref # 92015) | 92015-1193 | 1 |
| WASHER,SIGNAL LAMP (Ref # 92022) | 92022-1672 | 1 |
| BULB,12V 32CP(23W) (Ref # 92069) | 92069-055 | 1 |
| BULB,12V 32/3CP(23/8W) (Ref # 92069A) | 92069-060 | 1 |
| DAMPER,SIGNAL LAMP (Ref # 92075) | 92075-1698 | 1 |