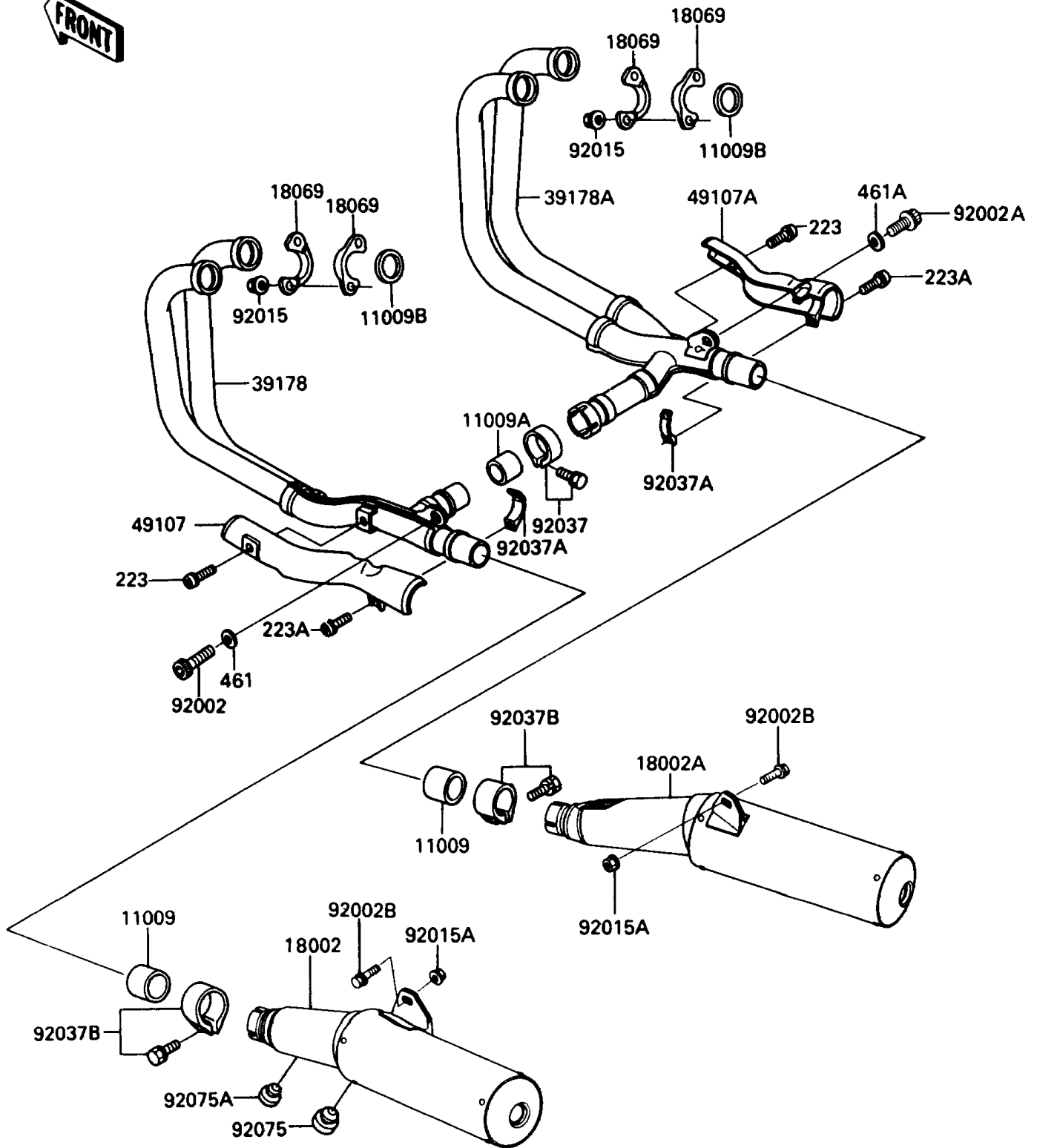


## 1989 PARTS DIAGRAM

Muffler

E1140



## 1989 PARTS LIST

Muffler

ITEM NAME	PART NUMBER	QUANTITY
GASKET,EXHAUST PIPE CONNECTING (Ref # 11009)	11009-1666	1
GASKET,EXHAUST MANUFOLD (Ref # 11009A)	11009-1668	1
GASKET,EXHAUST PIPE HOLDER (Ref # 11009B)	11009-1840	1
BODY-COMP-MUFFLER,LH (Ref # 18002)	18002-1756	1
BODY-COMP-MUFFLER,RH (Ref # 18002A)	18002-1757	1
HOLDER-EXHAUST PIPE (Ref # 18069)	18069-1054	1
MANIFOLD-COMP-EXHAUST,LH (Ref # 39178)	39178-1105	1
MANIFOLD-COMP-EXHAUST,RH (Ref # 39178A)	39178-1106	1
COVER-EXHAUST PIPE,LH (Ref # 49107)	49107-1053	1
COVER-EXHAUST PIPE,RH (Ref # 49107A)	49107-1058	1
BOLT,SOCKET,8X20 (Ref # 92002)	92002-1477	1
BOLT,SOCKET,10X25 (Ref # 92002A)	92002-1683	1
BOLT,10X30 (Ref # 92002B)	92002-1817	1
NUT,LOCK,8MM (Ref # 92015)	92015-1380	1
NUT,FLANGED,10MM (Ref # 92015A)	92015-1387	1
CLAMP,MUFFLER,BLACK (Ref # 92037)	92037-1270	1
CLAMP,EXHAUST PIPE COVER (Ref # 92037A)	92037-1506	1
CLAMP,POWER CHAMBER (Ref # 92037B)	92037-1537	1
DAMPER,STAND,CNT (Ref # 92075)	92075-1002	1
DAMPER (Ref # 92075A)	92075-281	1
SCREW-PAN-WS-CROS (Ref # 223)	223C0612	1
SCREW-PAN-WS-CROS (Ref # 223A)	223C0620	1
WASHER-SPRING,8MM (Ref # 461)	461F0800	1
WASHER-SPRING,10MM,BLACK (Ref # 461A)	461K1000	1