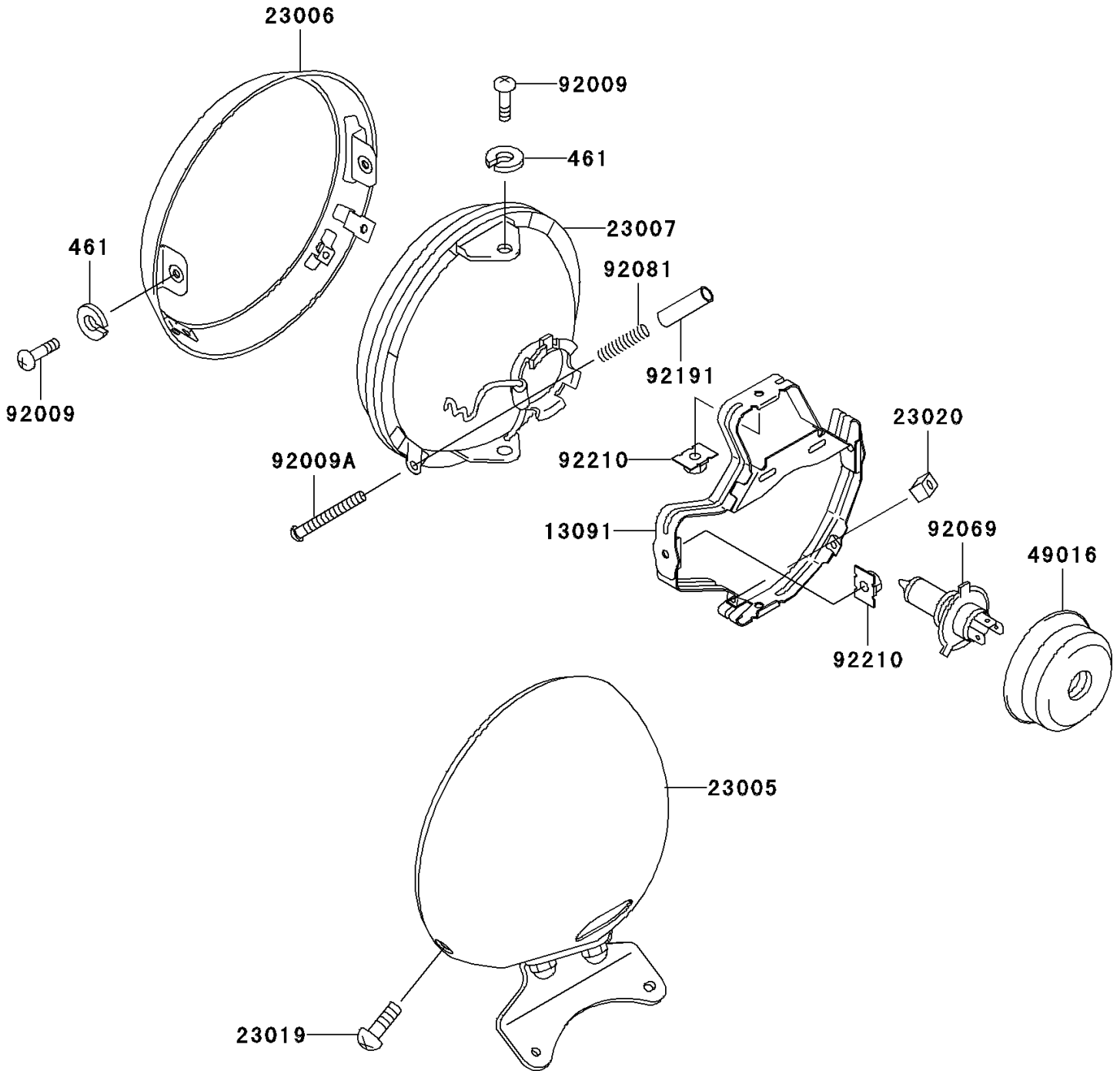


## 1996 Vulcan® 800 Classic PARTS DIAGRAM

Headlight(s)

F2710



## 1996 Vulcan® 800 Classic PARTS LIST

Headlight(s)

| ITEM NAME                              | PART NUMBER | QUANTITY |
|--|-------------|----------|
| WASHER-SPRING,5MM (Ref # 461)          | 461F0500    | 1        |
| HOLDER,HEAD LAMP (Ref # 13091)         | 13091-1948  | 1        |
| BODY-COMP-HEAD LAMP (Ref # 23005)      | 23005-1152  | 1        |
| RIM-LAMP (Ref # 23006)                 | 23006-1071  | 1        |
| LENS-COMP,HEAD LAMP (Ref # 23007)      | 23007-1338  | 1        |
| SCREW,SPECIAL,5X14 (Ref # 23019)       | 23019-024   | 1        |
| NUT,4MM,FOCUS ADJUST (Ref # 23020)     | 23020-018   | 1        |
| COVER-SEAL,HEAD LAMP (Ref # 49016)     | 49016-1046  | 1        |
| SCREW,5X12 (Ref # 92009)               | 92009-1296  | 1        |
| SCREW,FOCUS ADJUST,4X60 (Ref # 92009A) | 92009-1816  | 1        |
| BULB,12V 60/55W,H4 (Ref # 92069)       | 92069-1002  | 1        |
| SPRING,HEAD LAMP LENS (Ref # 92081)    | 92081-1103  | 1        |
| TUBE,3.5X4.5X19 (Ref # 92191)          | 92191-1217  | 1        |
| NUT,SPECIAL,5MM (Ref # 92210)          | 92210-1060  | 1        |