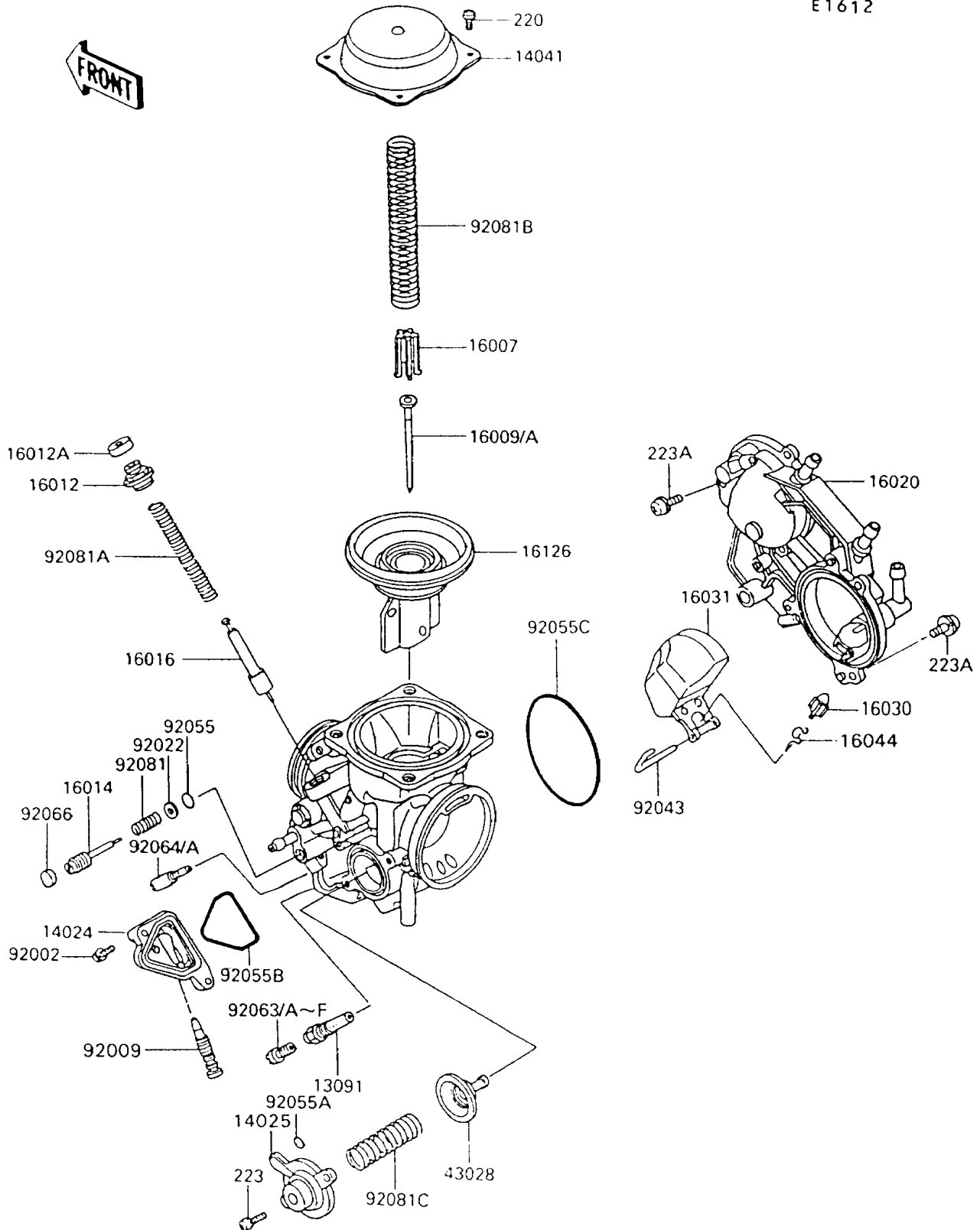


1994 Vulcan® 750 PARTS DIAGRAM

Carburetor Parts

E1612



1994 Vulcan® 750 PARTS LIST

Carburetor Parts

ITEM NAME	PART NUMBER	QUANTITY
HOLDER,NEEDLE JET (Ref # 13091)	13091-1384	1
COVER,DRAIN (Ref # 14024)	14024-1094	1
COVER,AIR CUT VALVE (Ref # 14025)	14025-1903	1
COVER-COMP,MIXING,INSIDE (Ref # 14041)	14041-1061	1
SEAT-SPRING,VALVE (Ref # 16007)	16007-1117	1
NEEDLE-JET,N53A,FR (Ref # 16009)	16009-1327	1
NEEDLE-JET,N53B,RR (Ref # 16009A)	16009-1328	1
CAP-STARTER PLUNGER (Ref # 16012)	16012-1051	1
CAP-STARTER PLUNGER (Ref # 16012A)	16012-1052	1
SCREW-PILOT AIR (Ref # 16014)	16014-1054	1
PLUNGER,STARTER (Ref # 16016)	16016-1066	1
CHAMBER-FLOAT,COMP (Ref # 16020)	16020-1051	1
VALVE-FLOAT (Ref # 16030)	16030-1057	1
FLOAT (Ref # 16031)	16031-1059	1
CLAMP,FLOAT VALVE (Ref # 16044)	16044-007	1
VALVE,VACUUM,60PS (Ref # 16126)	16126-1173	1
DIAPHRAGM,AIR CUT VALVE (Ref # 43028)	43028-1053	1
BOLT,4X14 (Ref # 92002)	92002-1761	1
SCREW,DRAIN,M6X0.75 (Ref # 92009)	92009-1551	1
WASHER,PLAIN (Ref # 92022)	92022-1003	1
PIN,FLOAT (Ref # 92043)	92043-1285	1
RING-O,PILOT ADJUST (Ref # 92055)	92055-1002	1
RING-O (Ref # 92055A)	92055-1245	1
RING-O (Ref # 92055B)	92055-1290	1
RING-O (Ref # 92055C)	92055-1291	1
JET-MAIN,#135 (Ref # 92063)	92063-1014	1
JET-MAIN,#138 (Ref # 92063A)	92063-1015	1
JET-MAIN,#125 (Ref # 92063B)	92063-1069	1
JET-MAIN,#122 (Ref # 92063C)	92063-1073	1

1994 Vulcan® 750 PARTS LIST

Carburetor Parts

ITEM NAME	PART NUMBER	QUANTITY
JET-MAIN,#128 (Ref # 92063D)	92063-1074	1
JET-MAIN,#130 (Ref # 92063E)	92063-1075	1
JET-MAIN,#132 (Ref # 92063F)	92063-1076	1
JET-PILOT,#38 (Ref # 92064)	92064-1118	1
JET-PILOT,#35 (Ref # 92064A)	92064-1123	1
SCREW-PAN-CROS (Ref # 220)	220D0408	1
SCREW-PAN-WS-CROS (Ref # 223)	223D0410	1
SCREW-PAN-WS-CROS (Ref # 223A)	223D0512	1
PLUG,PILOT AIR SCREW,6.9X2 (Ref # 92066)	92066-1051	1
SPRING,PILOT ADJUST SCREW (Ref # 92081)	92081-1002	1
SPRING,STARTER PLUNGER (Ref # 92081A)	92081-1761	1
SPRING,VACUUM VALVE (Ref # 92081B)	92081-1874	1
SPRING,AIR CUT VALVE (Ref # 92081C)	92081-1891	1