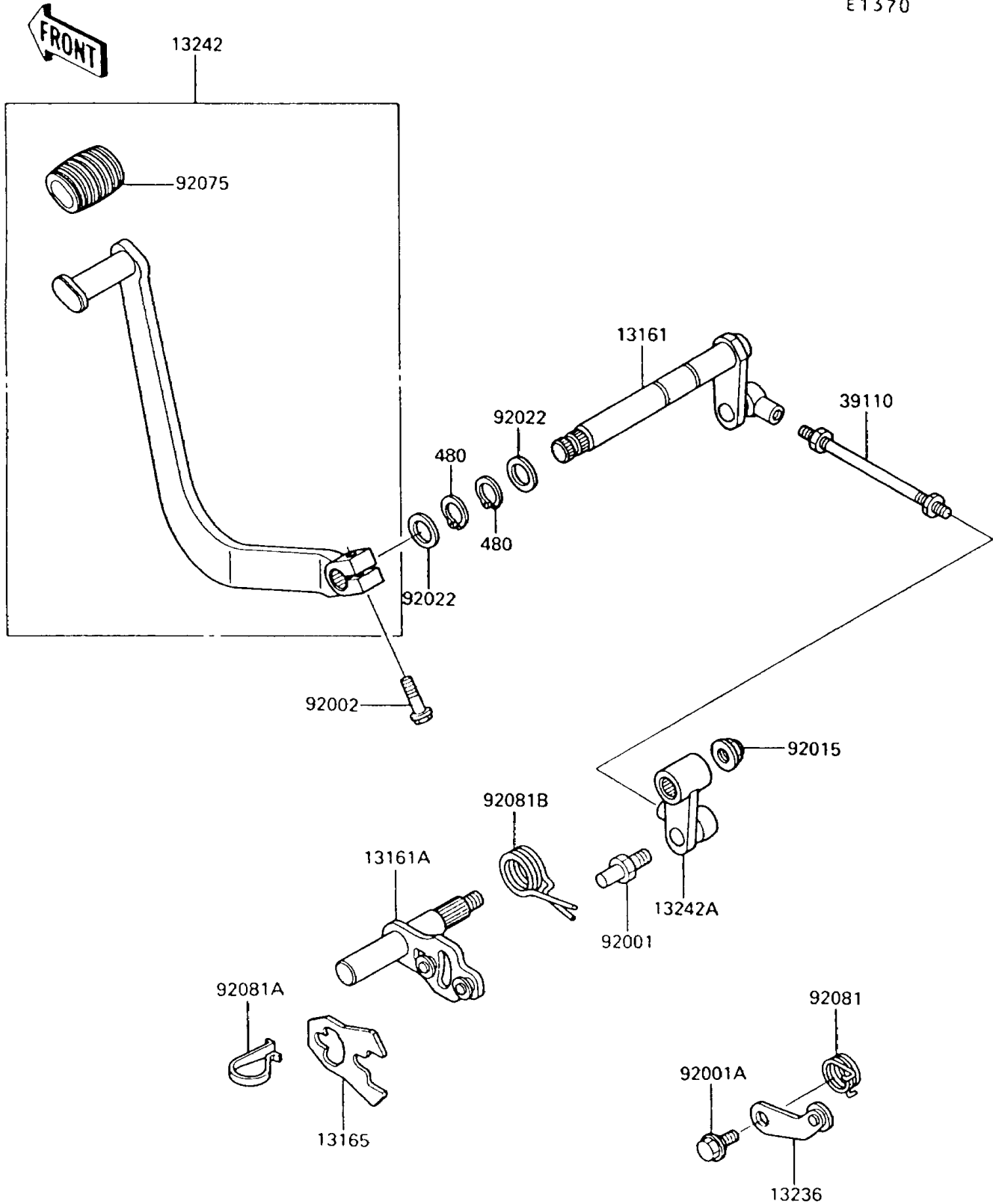


1994 Vulcan® 750 PARTS DIAGRAM

Gear Change Mechanism

E1370



1994 Vulcan® 750 PARTS LIST

Gear Change Mechanism

| ITEM NAME | PART NUMBER | QUANTITY |
|---|-------------|----------|
| CIRCLIP-TYPE-C,13MM (Ref # 480) | 480J1300 | 1 |
| LEVER-COMP-CHANGE SHAFT (Ref # 13161) | 13161-1119 | 1 |
| LEVER-COMP-CHANGE SHAFT (Ref # 13161A) | 13161-1120 | 1 |
| PAWL (Ref # 13165) | 13165-1120 | 1 |
| LEVER-COMP,POSITION (Ref # 13236) | 13236-1126 | 1 |
| LEVER-ASSY-CHANGE,PEDAL (Ref # 13242) | 13242-1185 | 1 |
| LEVER-ASSY-CHANGE (Ref # 13242A) | 13242-1188 | 1 |
| ROD-ASSY-TIE (Ref # 39110) | 39110-1073 | 1 |
| BOLT,RETURN SPRING (Ref # 92001) | 92001-1455 | 1 |
| BOLT,GEAR CHANGE LEVER (Ref # 92001A) | 92001-1715 | 1 |
| BOLT,6X20 (Ref # 92002) | 92002-1237 | 1 |
| NUT,FLANGED,8MM (Ref # 92015) | 92015-1397 | 1 |
| WASHER,13.2X20X0.5 (Ref # 92022) | 92022-1224 | 1 |
| DAMPER,CHANGE PEDAL (Ref # 92075) | 92075-1585 | 1 |
| SPRING,RETURN (Ref # 92081) | 92081-1777 | 1 |
| SPRING,CHANGE LEVER (Ref # 92081A) | 92081-1829 | 1 |
| SPRING,CHANGE PEDAL RETURN (Ref # 92081B) | 92081-1869 | 1 |