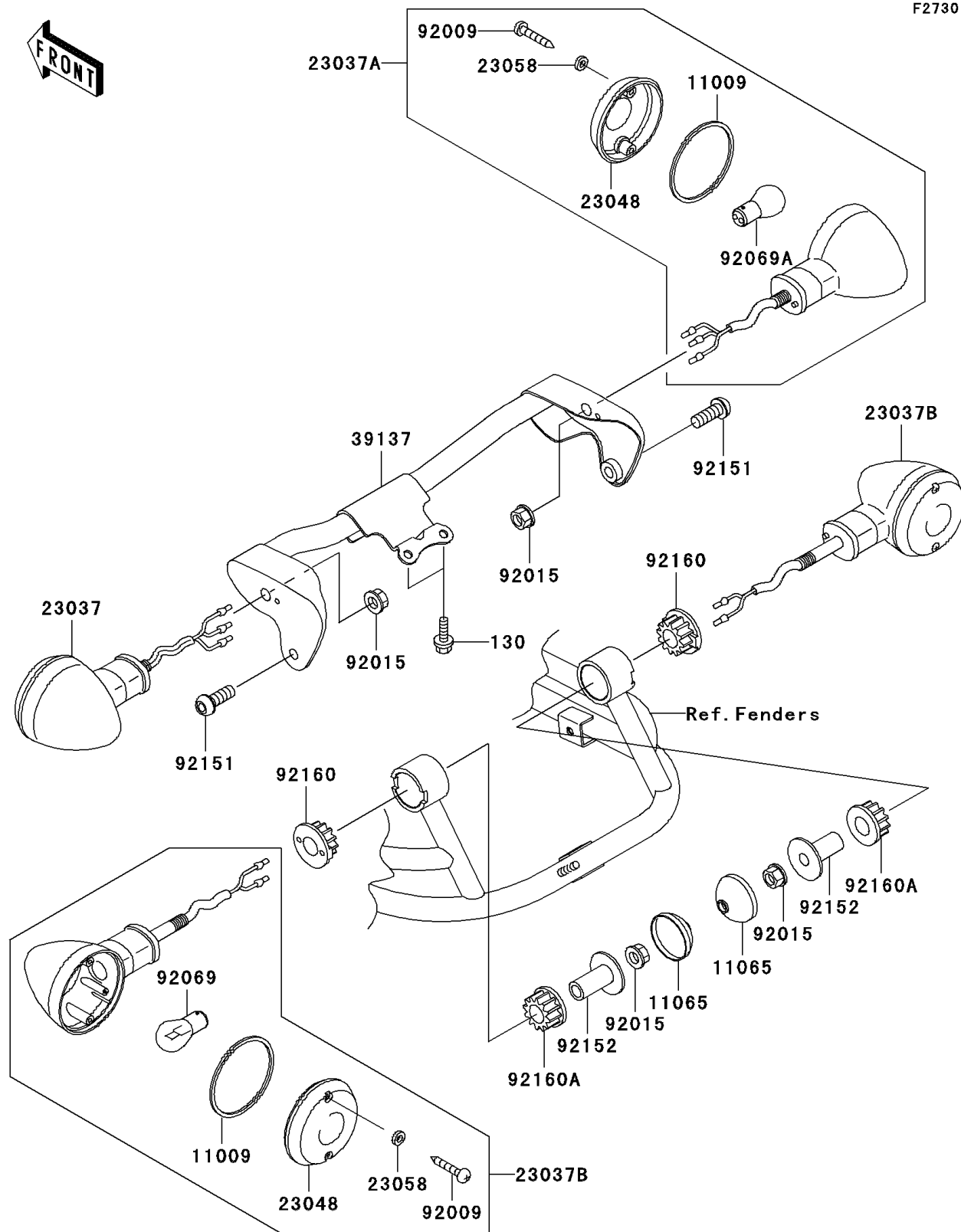


## 1999 Vulcan® 1500 Drifter® PARTS DIAGRAM

Turn Signals

F2730



## 1999 Vulcan® 1500 Drifter® PARTS LIST

Turn Signals

| ITEM NAME                              | PART NUMBER | QUANTITY |
|--|-------------|----------|
| BOLT-FLANGED (Ref # 130)               | 130J0612    | 1        |
| GASKET,SIGNAL LAMP (Ref # 11009)       | 11009-1413  | 1        |
| CAP,REAR SIGNAL LAMP (Ref # 11065)     | 11065-1115  | 1        |
| LAMP-ASSY-SIGNAL,FR,LH (Ref # 23037)   | 23037-1357  | 1        |
| LAMP-ASSY-SIGNAL,FR,RH (Ref # 23037A)  | 23037-1358  | 1        |
| LAMP-ASSY-SIGNAL,RR (Ref # 23037B)     | 23037-1359  | 1        |
| LENS-SIGNAL LAMP (Ref # 23048)         | 23048-1066  | 1        |
| WASHER,PLAIN,4MM (Ref # 23058)         | 23058-002   | 1        |
| STAY-COMP,SIGNAL LAMP,FR (Ref # 39137) | 39137-1072  | 1        |
| SCREW,TAPPING,4X25 (Ref # 92009)       | 92009-1637  | 1        |
| NUT,FLANGED,10MM (Ref # 92015)         | 92015-1428  | 1        |
| BULB,12V 32CP(23W) (Ref # 92069)       | 92069-055   | 1        |
| BULB,12V 32/3CP(23/8W) (Ref # 92069A)  | 92069-060   | 1        |
| BOLT,SOCKET,8X25 (Ref # 92151)         | 92151-1327  | 1        |
| COLLAR,REAR SIGNAL LAMP (Ref # 92152)  | 92152-1202  | 1        |
| DAMPER (Ref # 92160)                   | 92160-1966  | 1        |
| DAMPER (Ref # 92160A)                  | 92160-1967  | 1        |